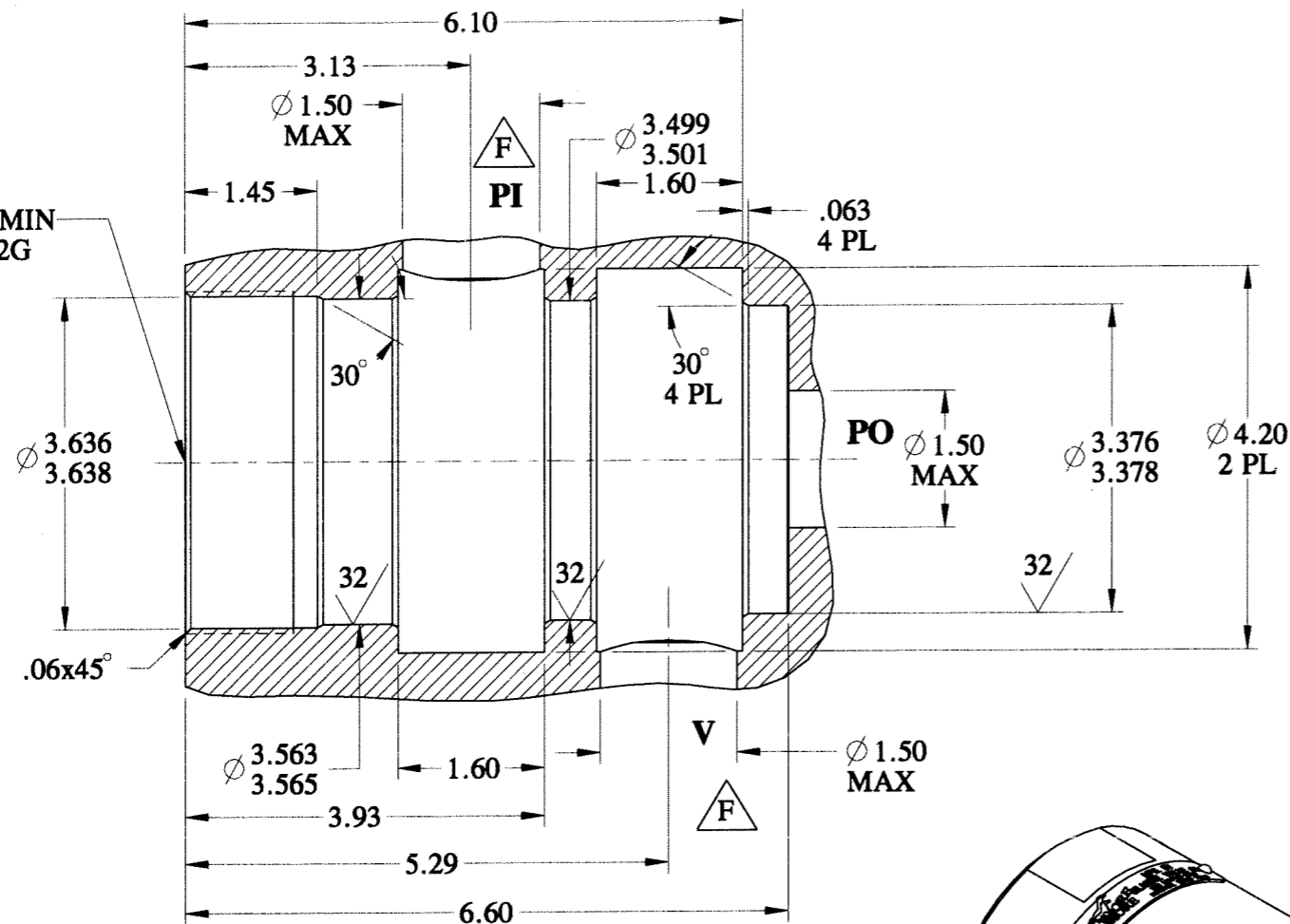
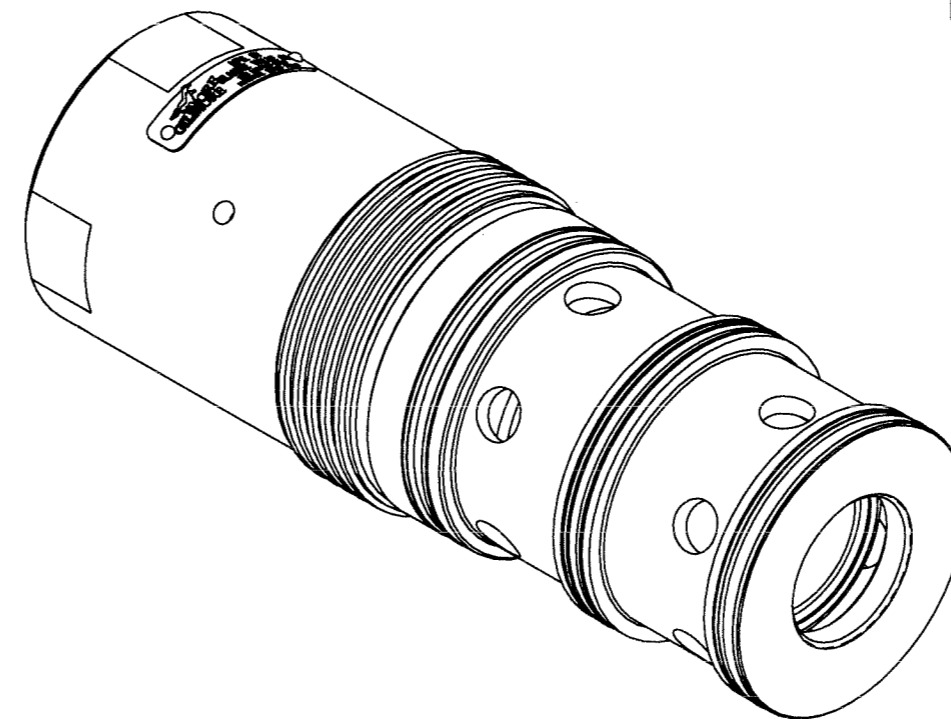
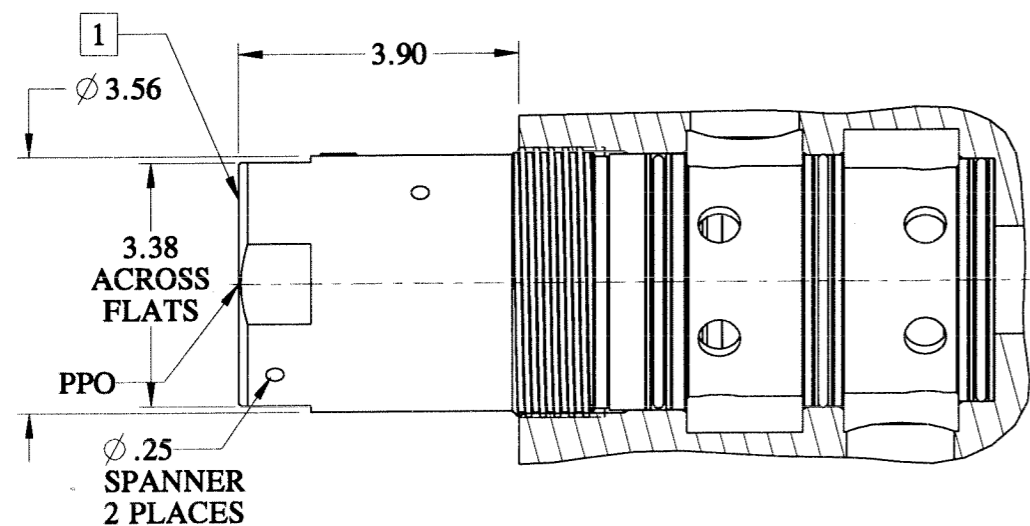


REV	ECN/ERN NO.	DRWN	CHKD	APPD
F	ECN 3034	JOSE 1/24/06	Bfm 1/26/06	Bfm 1/26/06

3-3/4"-5 X 1.19 MIN  
29° STUB ACME 2G



CAVITY DETAIL



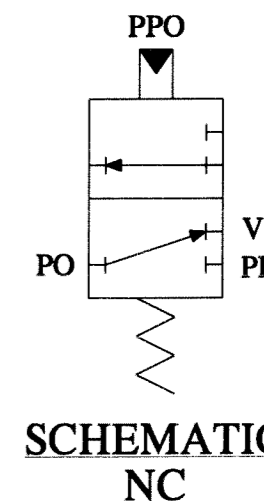
**PRESSURE DATA**  
 DESIGN SUPPLY PRESSURE (PI,PO) - 6,000 PSI  
 PROOF SUPPLY PRESSURE (PI,PO) - 9,000 PSI  
 DESIGN PILOT PRESSURE (PPO) - 6,000 PSI  
 PROOF PILOT PRESSURE (PPO) - 9,000 PSI  
 MINIMUM PILOT PRESSURE - 3,000 PSI

**FLOW DATA**  
 Cv = 30  
 FLUIDS - WATER, MINERAL OIL BASED  
 HYDRAULIC FLUIDS

**PORTS**  
 SUPPLY IN (PI) - 1.50  
 SUPPLY OUT (PO) - 1.50  
 PILOT PRESSURE OPEN (PPO) - 1/4 NPT  
 VENT PORT (V) - 1.50

**GENERAL DATA**  
 TEMP RANGE - 20° F TO 150° F  
 APPROX WEIGHT - 21 LBS  
 FIELD SERVICEABLE

4	<b>MATERIALS</b>
	17-4PH
	316 SS
	DELTRIN AF
	NITRILE
	NITRONIC 60
	PEEK
	TEFLON



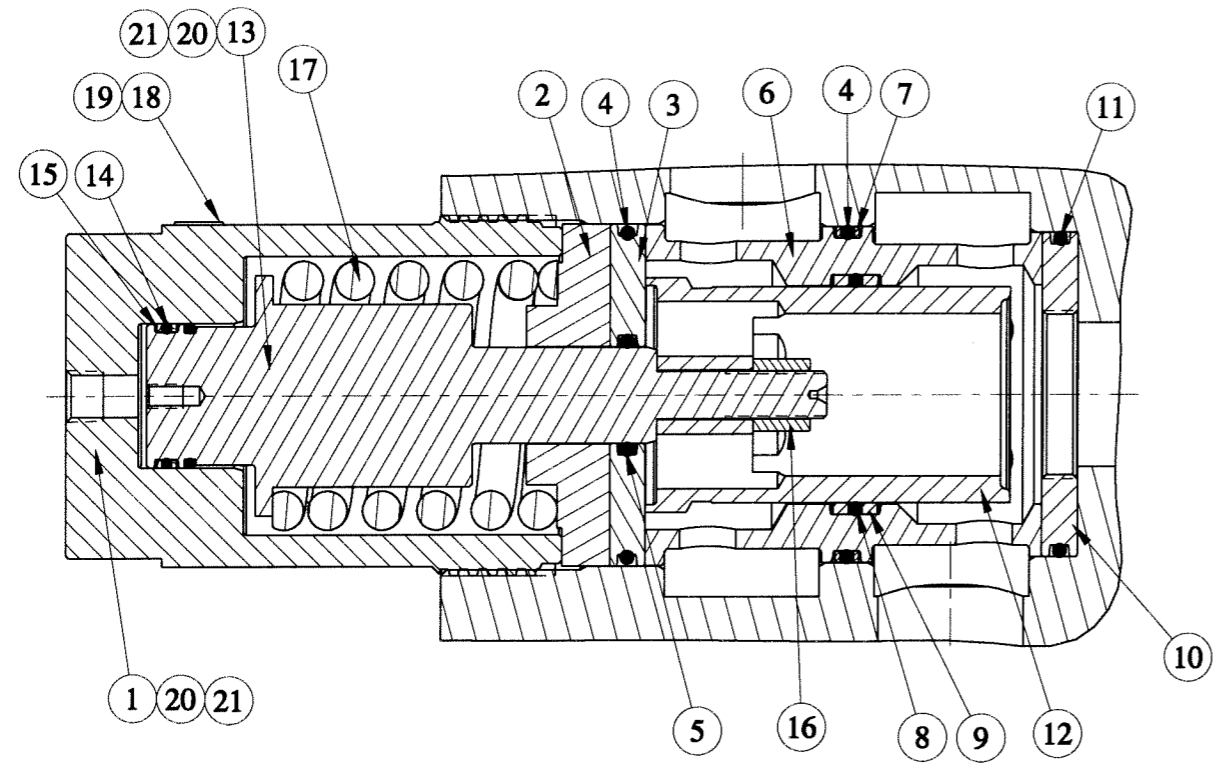
**SCHEMATIC**  
NC

- NOTES:
1. STAMP: ASSY PART NO., PATENT NO., PRESSURE RATING IN AREA INDICATED IN ACCORDANCE WITH GVC MANUFACTURING CUSTOM AND PRACTICE.
  2. FOR BOTTOM SEAL REMOVAL, USE TOOL ATL 10010-002.
  3. OPTIONAL VALVE BLOCK 27396-XX REFER TO DASH NUMBERS FOR VARIOUS CONNECTION OPTIONS.
  4. SEE TABLE ON SHEET 2 FOR SEAL SLEEVE MATERIAL.

U.S. PATENT NO. 5,771,931

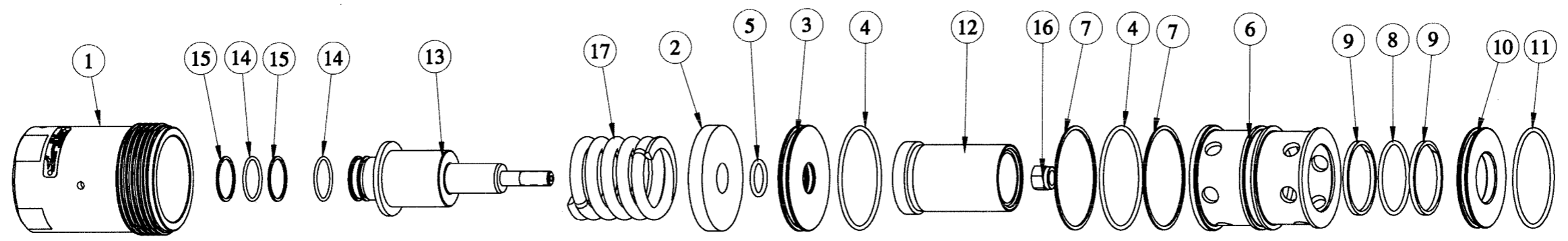
MATERIAL <b>SEE BOM ITEMS</b>		UNLESS OTHERWISE SPECIFIED TOLERANCES: DECIMALS FRACTIONS ANGLES X.X ±.1 ±1/32 ±.0 X.XX ±.01 X.XXX ±.005		DRWN BY DDG	DATE 5/7/01	GILMORE VALVE CO. 1231 LUMPKIN RD. HOUSTON, TX 77043
TREATMENT	CONDITION	DEBURR BREAK SHARP EDGES .010 INTERNAL RADIUS .015 FINISH	CHKD BY DW	DATE 5/11/01	VALVE, SPM, 1-1/2 N.C. 6,000 PSI	
PROC. NO.		DIMENSIONS ARE IN INCHES DO NOT SCALE DRAWING INTERPRET DIM. & TOL. PER ASME Y14.5M - 1994	APPD BY SS	DATE 5/11/01		
			ERN NO. 00397	DATE 4/25/01		
THE INFORMATION CONTAINED IN THIS DRAWING IS THE SOLE PROPERTY OF GILMORE VALVE CO. UNLESS OTHERWISE STATED, ANY REPRODUCTION IN PART OR WHOLE WITHOUT THE WRITTEN PERMISSION OF GILMORE VALVE CO. IS PROHIBITED.		SIZE B		DWG NO. 27170-X	REV F	SCALE 1:2
				PRO/ENGINEER		SHEET 1 OF 2

REV	ECN/ERN NO.	DRWN	CHKD	APPD
F	ECN 3034	JOSE' 1/24/06	Bfm 1/26/06	Bfm 1/26/06



PART NO.	ITEM 12 PART NO.	MATERIAL
27170-1	27201	17-4PH/TUNGSTEN CARBIDE
27170-2	27201-2	NITRONIC 60

ITEM NO	QTY	PART NO	DESCRIPTION	RK	SK
1	1	27198	SPRING HOUSING		
2	1	27203	SPACER		
3	1	27199	SEAL, TOP	X	X
4	2	18100-128C	O-RING	X	X
5	1	18100-107C	O-RING	X	X
6	1	27202	CAGE		
7	2	18110-222T	BACKUP RING	X	X
8	1	18100-101C	O-RING	X	X
9	2	27204	WEARBAND	X	X
10	1	27197	SEAL, BOTTOM	X	X
11	1	18100-129C	O-RING	X	X
12	1	SEE TABLE	SEAL SLEEVE	X	
13	1	27196	PISTON ROD		
14	2	18100-052C	O-RING	X	X
15	2	18110-124T	BACKUP RING	X	X
16	1	21112-007	HEX LOCK NUT, NYLON, 1/2-20 UNF-2B	X	
17	1	27200	SPRING		
18	1	12227	NAMETAG		
19	2	21082-002	DRIVE SCREW		
20	A/R	25822	ANTI SEIZE		
21	1	25822-1	ANTI SEIZE	X	X



NOTES: 1. X, IN COLUMN RK, DEPICTS PARTS IN REPAIR KIT, 27170-X RK.  
 2. X, IN COLUMN SK, DEPICTS PARTS IN SEAL KIT, 27170-X SK.

MATERIAL <b>SEE BOM ITEMS</b>		UNLESS OTHERWISE SPECIFIED TOLERANCES: DECIMALS FRACTIONS ANGLES X.X ±.1 ±1/32 ±1.0 X.XX ±.01 X.XXX ±.005		DRWN BY <b>DDG</b>	DATE <b>5/7/01</b>	<b>GILMORE VALVE CO.</b> 1231 LUMPKIN RD. HOUSTON, TX 77043  <b>VALVE, SPM, 1-1/2 N.C.</b> <b>6,000 PSI</b>
TREATMENT	CONDITION	DEBURR BREAK SHARP EDGES .010 INTERNAL RADIUS .015 FINISH $\sqrt{\text{V}}$	CHKD BY <b>DW</b>	DATE <b>5/11/01</b>	SIZE <b>B</b>	
PROC. NO.		DIMENSIONS ARE IN INCHES DO NOT SCALE DRAWING INTERPRET DIM. & TOL. PER ASME Y14.5M - 1994	APPD BY <b>SS</b>	DATE <b>5/11/01</b>	DWG NO. <b>27170-X</b>	
			ERN NO. <b>00397</b>	DATE <b>4/25/01</b>	REV <b>F</b>	
				SCALE 1:2		PRO/ENGINEER SHEET 2 OF 2