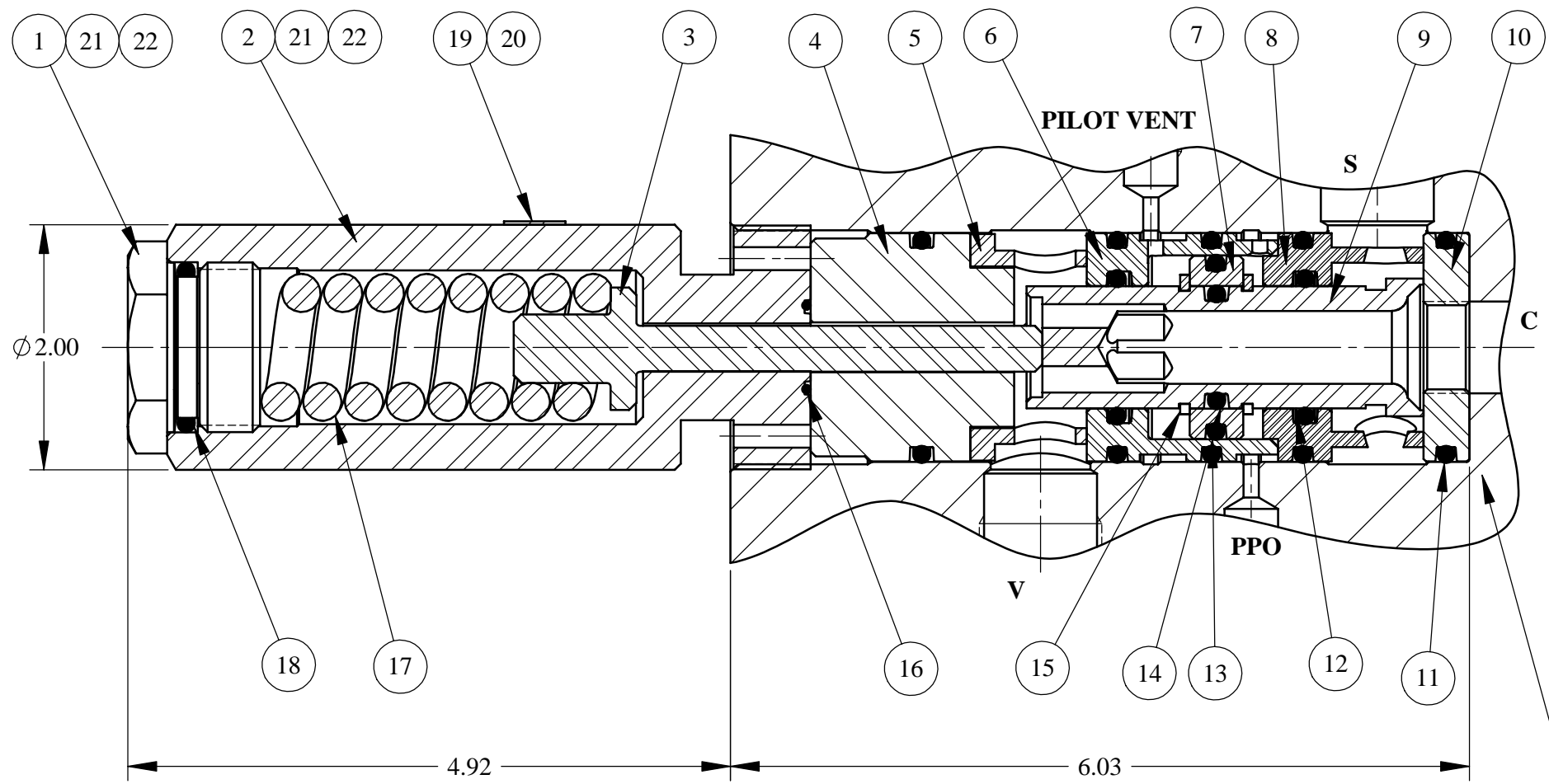
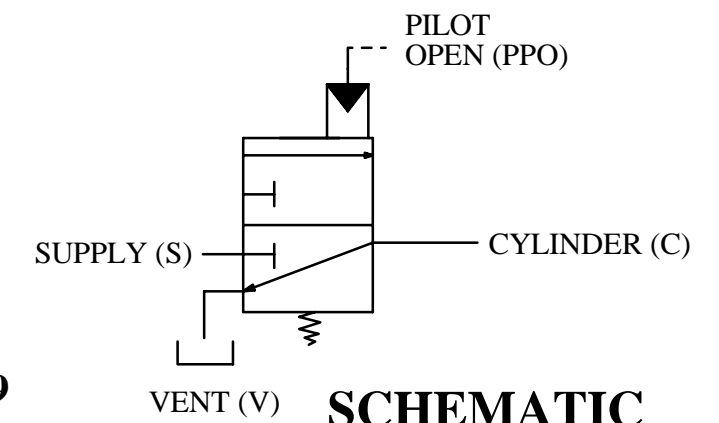


| REV | ECN/ERN NO. | DRWN         | CHKD        | APPD        |
|-----|-------------|--------------|-------------|-------------|
| B   | ECN 2335    | JOSE 2/21/02 | WRC 2/22/02 | TBT 2/25/02 |

| ITEM NO. | QTY. | PART NO.   | DESCRIPTION        | RK | SK |
|----------|------|------------|--------------------|----|----|
| 1        | 1    | 11756      | HOUSING PLUG       |    |    |
| 2        | 1    | 22166      | SPRING HOUSING     |    |    |
| 3        | 1    | 11761      | SPRING PLATE       |    |    |
| 4        | 1    | 12048      | TOP SEAL           | X  | X  |
| 5        | 1    | 12047      | VENT CAGE          |    |    |
| 6        | 1    | 11487      | UPPER CAGE         |    |    |
| 7        | 1    | 11484      | PISTON             |    |    |
| 8        | 1    | 11486      | LOWER CAGE         |    |    |
| 9        | 1    | 22167      | SPINDLE VALVE      | X  |    |
| 10       | 1    | 11485      | BOTTOM SEAL        | X  | X  |
| 11       | 5    | 18100-106B | O-RING             | X  | X  |
| 12       | 2    | 18100-107C | O-RING             | X  | X  |
| 13       | 1    | 18100-108C | O-RING             | X  | X  |
| 14       | 1    | 18100-109B | O-RING             | X  | X  |
| 15       | 2    | 18402-001  | RETAINER RING, EXT | X  |    |
| 16       | 1    | 18100-001B | O-RING             | X  | X  |
| 17       | 1    | 12116      | COMPRESSION SPRING |    |    |
| 18       | 1    | 18100-110B | O-RING             | X  | X  |
| 19       | 1    | 12227      | NAME TAG           |    |    |
| 20       | 2    | 21082-002  | SCREW, DRIVE       |    |    |
| 21       | A/R  | 25822      | ANTI SEIZE         |    |    |
| 22       | 1    | 25822-1    | ANTI SEIZE         | X  | X  |



**WORKING PRESSURE:**  
 SUPPLY, S=3,000 PSI  
 CYLINDER, C=3,000 PSI  
 PILOT PRESSURE, PPO=1,500 - 3,000 PSI  
 VENT PRESSURE, V=3,000 PSI  
 DEPTH=10,000 FT



**PAT.NO.4,457,489**

APPROX. WEIGHT: 5.5 LBS

**NOTES:** 1. SPECIAL TOOL 11520 USED ON ITEM #10.  
 SPECIAL TOOL 11572 USED ON ITEM #15.  
 SPECIAL TOOL 22156 USED ON ITEM #9.

|   |   |                      |                 |  |                    |
|---|---|----------------------|-----------------|--|--------------------|
| MATERIAL<br>SEE INDIV.<br>BOM ITEMS   | UNLESS OTHERWISE SPECIFIED<br>TOLERANCES:<br>DECIMALS FRACTIONS ANGLES<br>.X ±.1 ± 1/32 ±1° | DRWN BY<br><b>JK</b> | DATE<br>8/25/00 | <b>GILMORE VALVE CO.</b><br>1231 LUMPKIN RD.<br>HOUSTON, TX. 77043<br><br>NORMALLY CLOSED<br>3/4 SPM VALVE<br>WITH CAPTURED VENT |                    |
| TREATMENT   | CONDITION   | CHKD BY              | DATE            |  |                    |
| PROC. NO.   | DEBURR<br>BREAK SHARP EDGES .010<br>INTERNAL RADIUS .015<br>FINISH 63                       | APPD BY              | DATE            |  |                    |
| THE INFORMATION CONTAINED IN THIS DRAWING IS THE SOLE PROPERTY OF GILMORE VALVE CO. UNLESS OTHERWISE STATED. ANY REPRODUCTION IN PART OR WHOLE WITHOUT THE WRITTEN PERMISSION OF GILMORE VALVE CO. IS PROHIBITED. |   | ERN NO.              | DATE            |  |                    |
| DIMENSIONS ARE IN INCHES<br>DO NOT SCALE DRAWING<br>INTERPRET DIM. & TOL. PER<br>ASME Y14.5M - 1994   |   |                      |                 | SIZE<br>B  | DWG NO.<br>23077-3 |
|   |   | SCALE<br>1:1         | SOLIDWORKS      | SHEET 1 OF 1   | REV<br>B           |