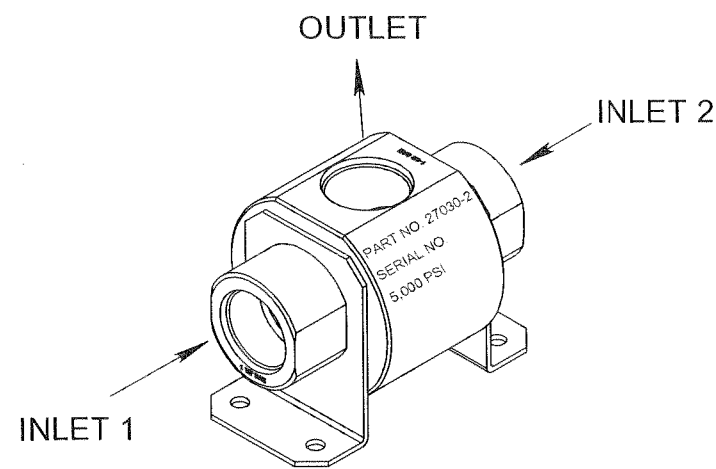
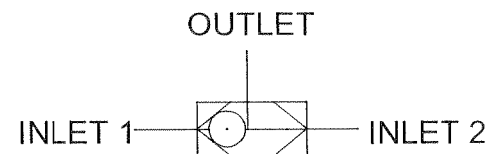


REV	ECN/ERN NO.	DRWN	CHKD	APPD
B	ECN 1807	JP 2/9/00	WRC 2/9/00	H <sup>2</sup> 9-Feb-00

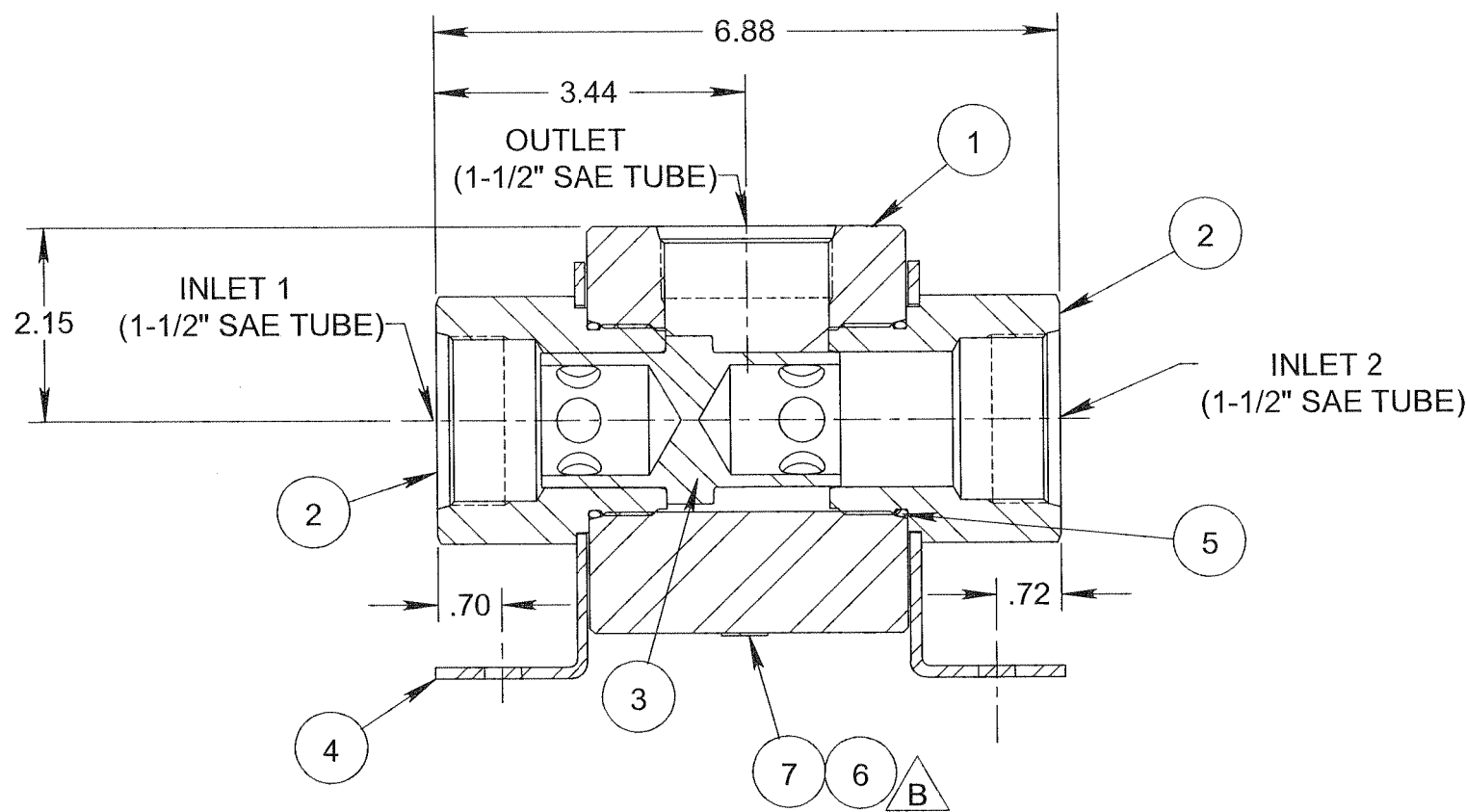


**ISOMETRIC VIEW**



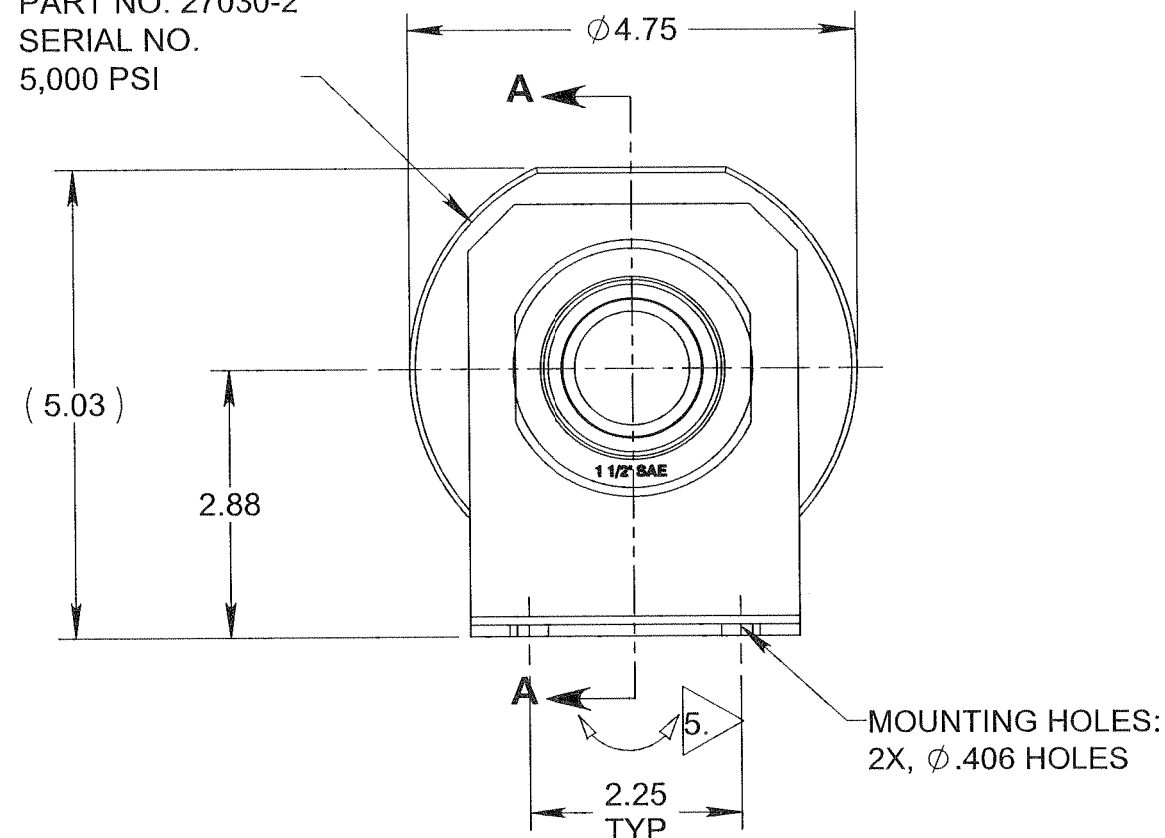
ITEM NO.	QTY.	PART NO.	DESCRIPTION	RK
1	1	23839	BODY, 1-1/2" SAE	
2	2	23840	ADAPTER, 1-1/2" SAE	X
3	1	27011	SHUTTLE, 1-1/2" MKIII	X
4	2	23842	MOUNTING PLATE	
5	2	18100-073B	O-RING 2-3/16 x 2 x 3/32	X
6	1	12227	NAME TAG	
7	2	21082-002	SCREW, DRIVE	

MAX PRESSURE RATING - 5,000 PSI  
 MAX FLOW CAPACITY - 320 GPM  
 TEMP RANGE: -20°F TO 200°F  
 Cv = 22.7  
 CONNECTIONS: 1-1/2" SAE TUBE  
 APPROX WEIGHT: 20 LBS  
 FLUIDS: WATER & MINERAL OIL BASED  
 HYDRAULIC FLUIDS



**SECTION 'A - A'**

STAMP: .13 HIGH MIN.  
 PART NO. 27030-2  
 SERIAL NO.  
 5,000 PSI



MOUNTING HOLES:  
 2X,  $\phi$ .406 HOLES

- 5. MOUNTING PLATE (ITEM #4) IS FREE TO ROTATE 360° AROUND ADAPTER FOR MOUNTING PURPOSES.
- 4. X - INDICATES PARTS PROVIDED IN REPAIR KIT 27030-2 RK.
- 3. MOUNTING PLATES (ITEMS #4) EACH REQUIRES, QTY 4,  $\phi$  3/8 BOLTS.
- 2. DO NOT SCRATCH/DAMAGE METAL SEALING SURFACES ON SHUTTLE & ADAPTERS.

NOTES: 1. TORQUE INLET ADAPTERS (ITEMS #2) TO 200 FT LBS.

MATERIAL REFER TO INDIV. B.O.M. ITEMS		UNLESS OTHERWISE SPECIFIED TOLERANCES: DECIMALS FRACTIONS ANGLES .X ± .1 ± 1/32 ± 1° .XX ± .01 .XXX ± .005		DRWN BY JP	DATE 11/15/99	<b>GILMORE VALVE COMPANY</b> 1231 LUMPKIN RD. HOUSTON, TX. 77043	
TREATMENT	CONDITION	DEBURR BREAK SHARP EDGES .010 FINISH 63/	CHKD BY CWC	DATE 12/02/99			
PROC. NO. GVCP-0254		DIMENSIONS ARE IN INCHES DO NOT SCALE DRAWING INTERPRET DIM. & TOL. PER ASME Y14.5M - 1994		APPD BY H <sup>2</sup>	DATE 2DEC 99	ASSEMBLY, SHUTTLE, HP MK-III 1-1/2" SAE TUBE, LOW INTERFLOW	
THE INFORMATION CONTAINED IN THIS DRAWING IS THE SOLE PROPERTY OF GILMORE VALVE CO. UNLESS OTHERWISE STATED. ANY REPRODUCTION IN PART OR WHOLE WITHOUT THE WRITTEN PERMISSION OF GILMORE VALVE CO. IS PROHIBITED.				ERN NO. 00047	DATE 11/10/99		
				SIZE B		DWG. NO. 27030-2	REV B
				SCALE 1:2		SOLIDWORKS	SHEET 1 OF 1