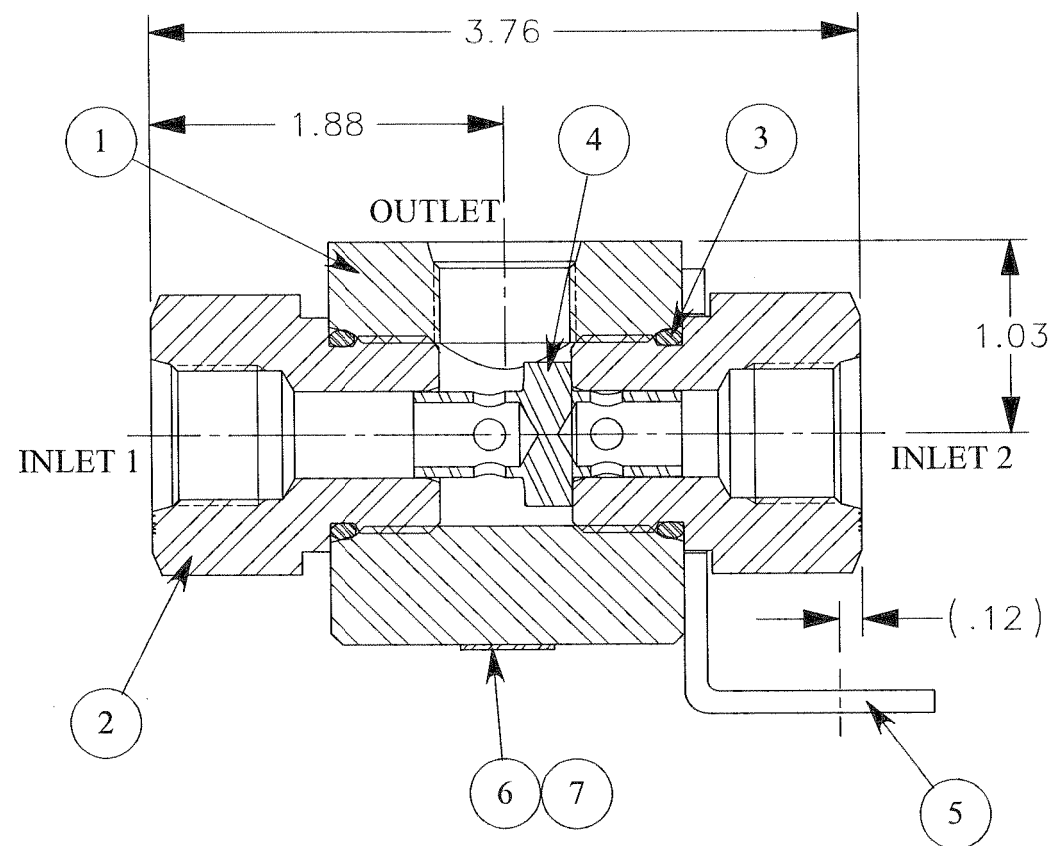
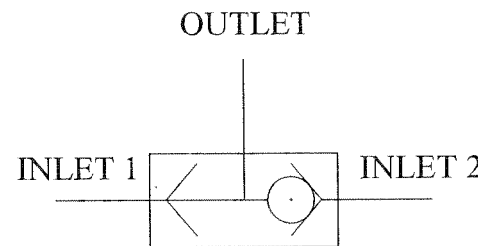
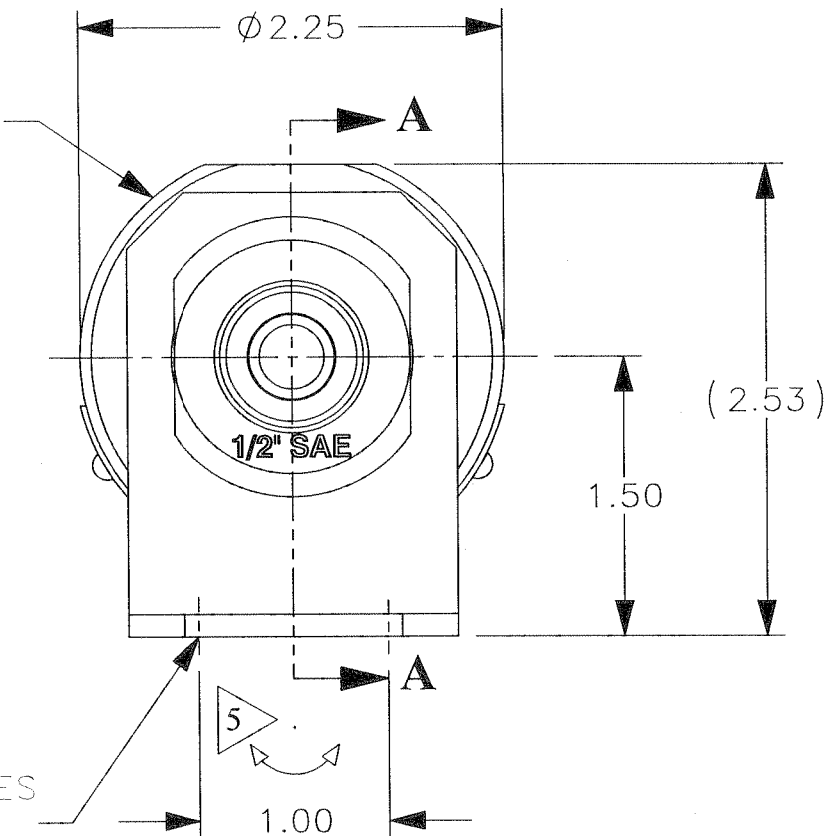


**ISOMETRIC VIEW**



**SECTION 'A-A'**

STAMP .13" HIGH MIN.  
PART NO. 27019  
SERIAL NO.  
5,000 PSI



REV	ECN/ERN NO.	DRWN	CHKD	APPD
A	ERN 00126	JM 02-07-00	wrc 2/9/00	H <sup>2</sup> 11-Feb-00

ITEM NO.	QTY.	PART NO.	DESCRIPTION	RK
1	1	12991	BODY, 1/2" SAE	
2	2	12990	ADAPTER, 1/2" SAE	X
3	2	18100-063B	O-RING, 1-1/8 x 15/16 x 3/32	X
4	1	27007	SHUTTLE, 1/2" MK-III	X
5	1	12993	MOUNTING PLATE	
6	1	12227	NAME TAG	
7	2	21082-002	SCREW, DRIVE	

MAX. PRESSURE RATING 5,000 PSI  
MAX. FLOW CAPACITY - 80 GPM  
TEMP. RANGE -20 °F TO 200 °F  
Cv = 2.4  
CONNECTIONS - 1/2" SAE TUBING  
APPROX WEIGHT 3 LBS.  
FLUIDS - WATER & MINERAL OIL BASED  
HYDRAULIC FLUIDS

MOUNTING HOLES  
2x,  $\phi 9/32$

- NOTES:
- 1.) TORQUE INLET ADAPTERS (ITEM #2) AT ASSEMBLY TO 50 FT. LBS.
  - 2.) DO NOT SCRATCH/DAMAGE METAL SEALING SURFACES ON SHUTTLE & ADAPTERS
  - 3.) MOUNTING PLATE (ITEM #5) REQUIRES QTY. 2,  $\phi 1/4$  BOLTS
  - 4.) X DEPICTS PARTS IN REPAIR KIT 27019 RK
  - 5.) MOUNTING PLATE (ITEM #5) IS FREE TO ROTATE 360° AROUND ADAPTER FOR MOUNTING PURPOSES

MATERIAL REFER TO INDIV. B.O.M. ITEMS		UNLESS OTHERWISE SPECIFIED TOLERANCES: DECIMALS FRACTIONS ANGLES .X ± .1 ± 1/32 ± 1° .XX ± .01 .XXX ± .005		DRWN BY JM	DATE 02-07-00	<b>GILMORE VALVE COMPANY</b> 1231 LUMPKIN RD. HOUSTON, TX. 77043		
TREATMENT	CONDITION	DEBURR BREAK SHARP EDGES .010 FINISH 63/	CHCKD BY wrc	DATE 2/9/00	ASSEMBLY, SHUTTLE, HP-MKIII 1/2" SAE, HIGH INTERFLOW			
PROC. NO. GVCP-0254		DIMENSIONS ARE IN INCHES DO NOT SCALE DRAWING INTERPRET DIM. & TOL. PER ASME Y14.5M - 1994	APPD BY H <sup>2</sup>	DATE 11-Feb-00			ERN NO. 00126	DATE
THE INFORMATION CONTAINED IN THIS DRAWING IS THE SOLE PROPERTY OF GILMORE VALVE CO. UNLESS OTHERWISE STATED, ANY REPRODUCTION IN PART OR WHOLE WITHOUT THE WRITTEN PERMISSION OF GILMORE VALVE CO. IS PROHIBITED.						SIZE B	DWG NO. 27019	REV A
						SCALE 1:1	SOLIDWORKS	SHEET 1 OF 1