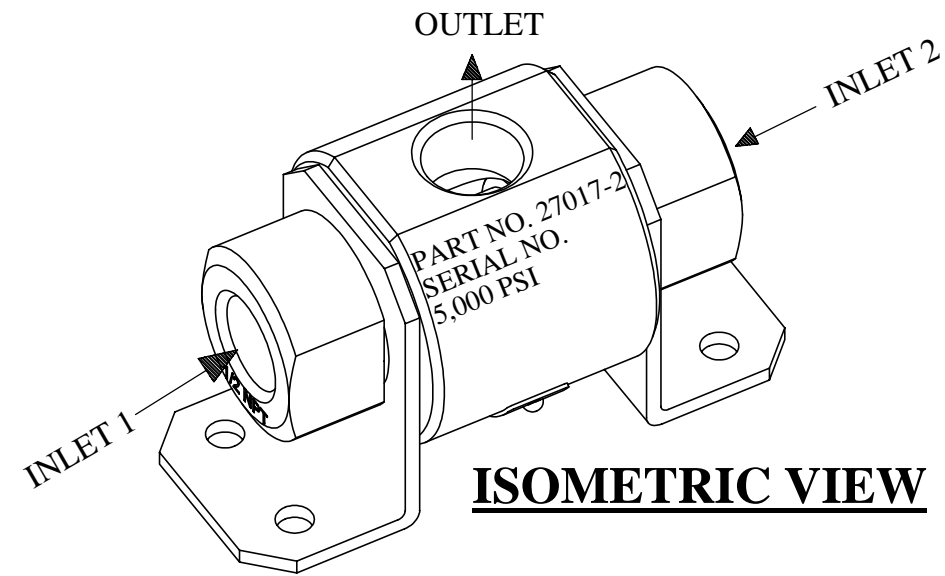
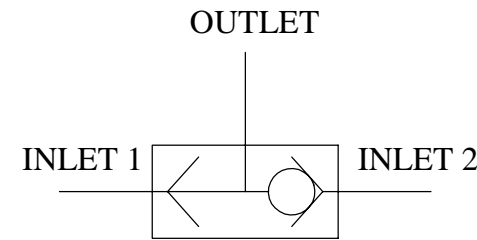


REV	ECN/ERN NO.	DRWN	CHKD	APPD
A	ERN 00045	CWC 11/16/99	JP 11/17/99	HH 11/22/99

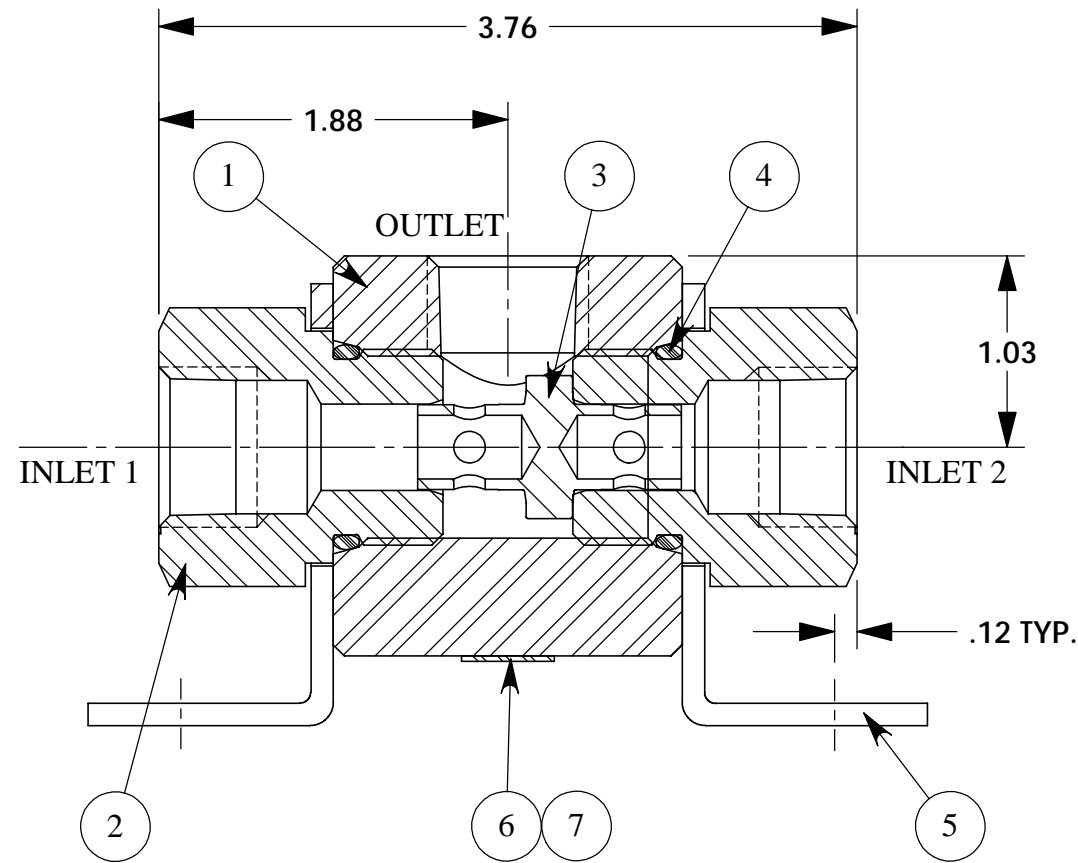


ISOMETRIC VIEW



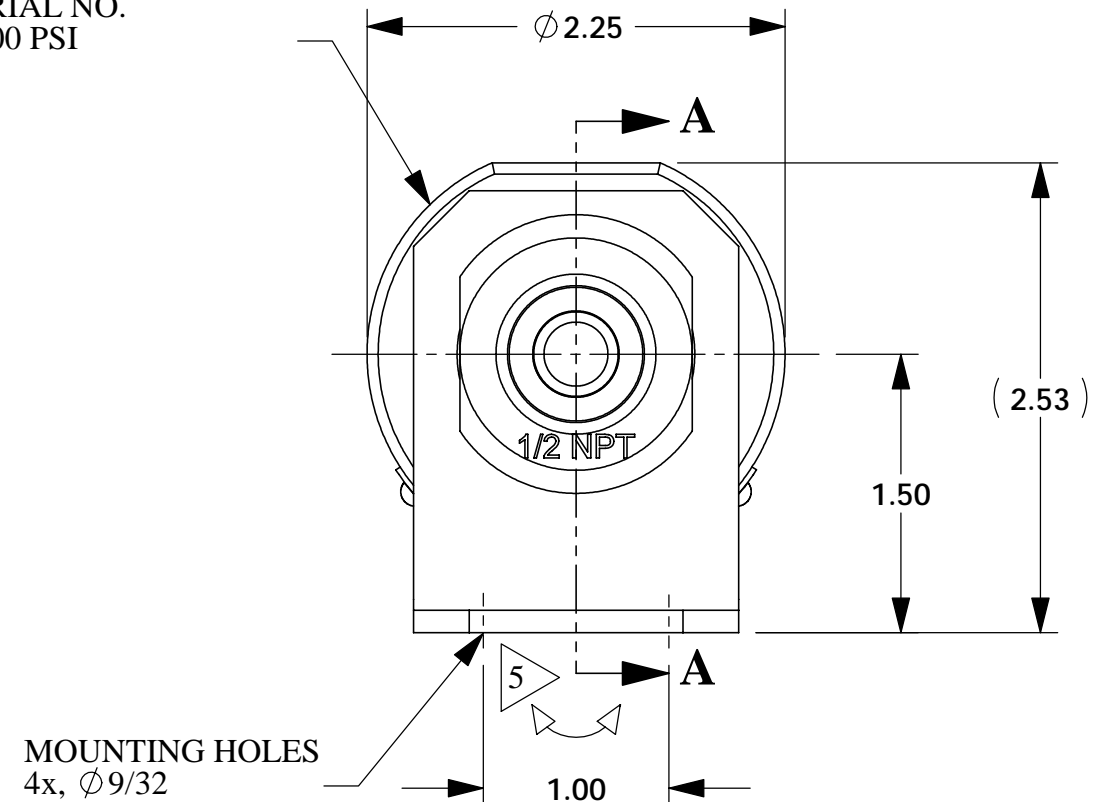
ITEM NO.	QTY.	PART NO.	DESCRIPTION	RK
1	1	13001	BODY, 1/2" NPT	
2	2	13000	ADAPTER, 1/2" NPT	X
3	1	27000	SHUTTLE, 1/2" MK-III	X
4	2	18100-063B	O-RING, 1-1/8 x 15/16 x 3/32	X
5	2	12993	MOUNTING PLATE	
6	1	12227	NAME TAG	
7	2	21082-002	SCREW, DRIVE	

MAX. PRESSURE RATING - 5,000 PSI
 MAX. FLOW CAPACITY - 80 GPM
 TEMP. RANGE -20°F TO 250°F
 Cv = 2.4
 CONNECTIONS - 1/2" NPT
 APPROX. WEIGHT 3 LBS.
 FLUIDS - WATER, MINERAL OIL BASED
 HYDRAULIC FLUIDS



SECTION 'A-A'

STAMP .13" HIGH MIN.
 PART NO. 27017-2
 SERIAL NO.
 5,000 PSI



MOUNTING HOLES
 4x, $\phi 9/32$

5. MOUNTING PLATE (ITEM #5) IS FREE TO ROTATE 360° AROUND ADAPTER FOR MOUNTING PURPOSES.
 4.) X DEPICTS PARTS IN REPAIR KIT 27017-2 RK
 3.) MOUNTING PLATE (ITEM #5) REQUIRES QTY. 4, $\phi 1/4$ BOLTS
 2.) DO NOT SCRATCH/DAMAGE METAL SEALING SURFACES ON SHUTTLE & ADAPTORS
 NOTES: 1.) TORQUE INLET ADAPTORS (ITEM #2) AT ASSEMBLY TO 50 FT. LBS.

MATERIAL REFER TO INDIV. B.O.M. ITEMS	UNLESS OTHERWISE SPECIFIED TOLERANCES: DECIMALS FRACTIONS ANGLES .X ± .1 ± 1/32 ± 1° .XX ± .01 .XXX ± .005	DRWN BY CWC	DATE 11/16/99	GILMORE VALVE COMPANY 1231 LUMPKIN RD. HOUSTON, TX. 77043 ASSEMBLY, SHUTTLE, HP-MKIII 1/2" NPT, LOW INTERFLOW	
TREATMENT	CONDITION	CHKD BY JP	DATE 11/17/99		
PROC. NO. GVCP-0254	DEBURR BREAK SHARP EDGES .010 FINISH $\phi 3/$	APPD BY HH	DATE 11/22/99		
THE INFORMATION CONTAINED IN THIS DRAWING IS THE SOLE PROPERTY OF GILMORE VALVE CO. UNLESS OTHERWISE STATED. ANY REPRODUCTION IN PART OR WHOLE WITHOUT THE WRITTEN PERMISSION OF GILMORE VALVE CO. IS PROHIBITED.	DIMENSIONS ARE IN INCHES DO NOT SCALE DRAWING INTERPRET DIM. & TOL. PER ASME Y14.5M - 1994	ERN NO. 00045	DATE 10/14/99		
		SIZE B	DWG NO. 27017-2	REV A	
		SCALE 1:1	SOLIDWORKS	SHEET 1 OF 1	