

STAMP: .13 HIGH MAX
PART NO.
SERIAL NO.
5,000 PSI

(3.44)

(9.43)

(4.715)

OUTLET

INLET

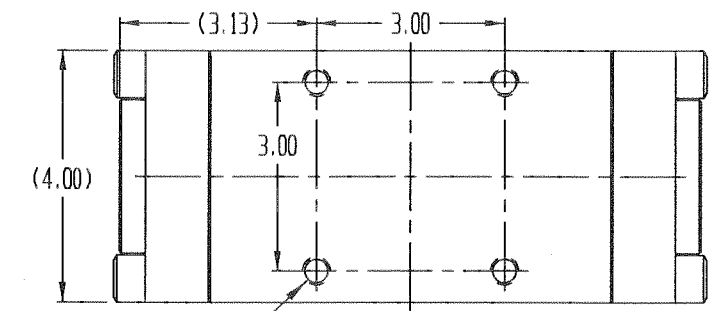
INLET

(9.25) SECTION VIEW

ITEM	DESCRIPTION	PART NO.	REQ'D	RK	SK
1	HOUSING	33065	1		
2	FLANGE	23781	3		
3	S.H.C.S. 1/2-13 x 1.5 LG.	18224-005	24		
4	O-RING	18100-101B	3	X	X
5	SPACER	11729	2	X	
6	O-RING	18100-104T	2	X	X
7	SHUTTLE	22414	1	X	
8	CAGE	22791	2	X	
9	NAME TAG	12225	1		
10	SCREW, DRIVE, 3/16 LG.	21082-002	2		
11	ANTI-SEIZE COMPOUND	25822	A/R		
12	ANTI-SEIZE COMPOUND	25822-1	1	X	X

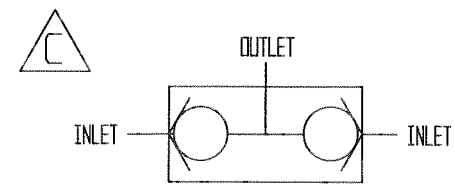
MAX. WORKING PRESSURE - 5,000 PSI
MAX FLOW CAPACITY - GPM
FLOW PORTS - 1-1/2" BORE
TEMP. RANGE - 20°F TO 200°F
Cv= 14.5
CONNECTIONS- 1-1/2" SAE TUBING
APPROX. WEIGHT - 30 LBS.
FLUIDS - WATER & MINERAL OIL BASED
HYDRAULIC FLUIDS

MATERIAL
316 STAINLESS STEEL
410 STAINLESS STEEL
17-4 PH
A-286
TEFLON
BLINA-N



MOUNTING HOLES
3/8 - 16 UNC x .63 DEEP
4 PLACES

BOTTOM VIEW



SCHEMATIC

MATERIAL : REFER TO INDIV. B.O.M. ITEMS		
TREATMENT	ROCKWELL "C"	TOLERANCES UNLESS OTHERWISE SPEC.
PROC. NO. GVCP - 0253		3 - PLACE DEC. ± .005 2 - PLACE DEC. ± .01 FRACTIONAL ± ANGULAR ± 3°
ALL PIPE THREADS TO BE IN ACCORD - ANCE WITH AMERICAN STANDARD GAUGE UNLESS OTHERWISE SPECIFIED.		

ECN NO. 2825	4/28/04	JOSE	TBT 7/2/09
NO.	REVISIONS	DATE	DR. CK.

NAME OF PART VALVE, SHUTTLE, CUSHIONED, LOW INTERFLOW, 1-1/2" SAE	
GILMORE VALVE COMPANY HOUSTON, TEXAS	
DATE - 3/8/96	REFERENCE
SCALE - FULL	
DR. BY - RLR	DRAWING NO.
C'K'D BY - JOSE	25428
APP'D BY - TMB	

NOTES: 1.) TORQUE ITEM 3 AT ASSEMBLY TO 45 FT. LBS.
2.) X DEPICTS PARTS IN REPAIR KIT 25428 RK & SEAL KIT 25428 SK