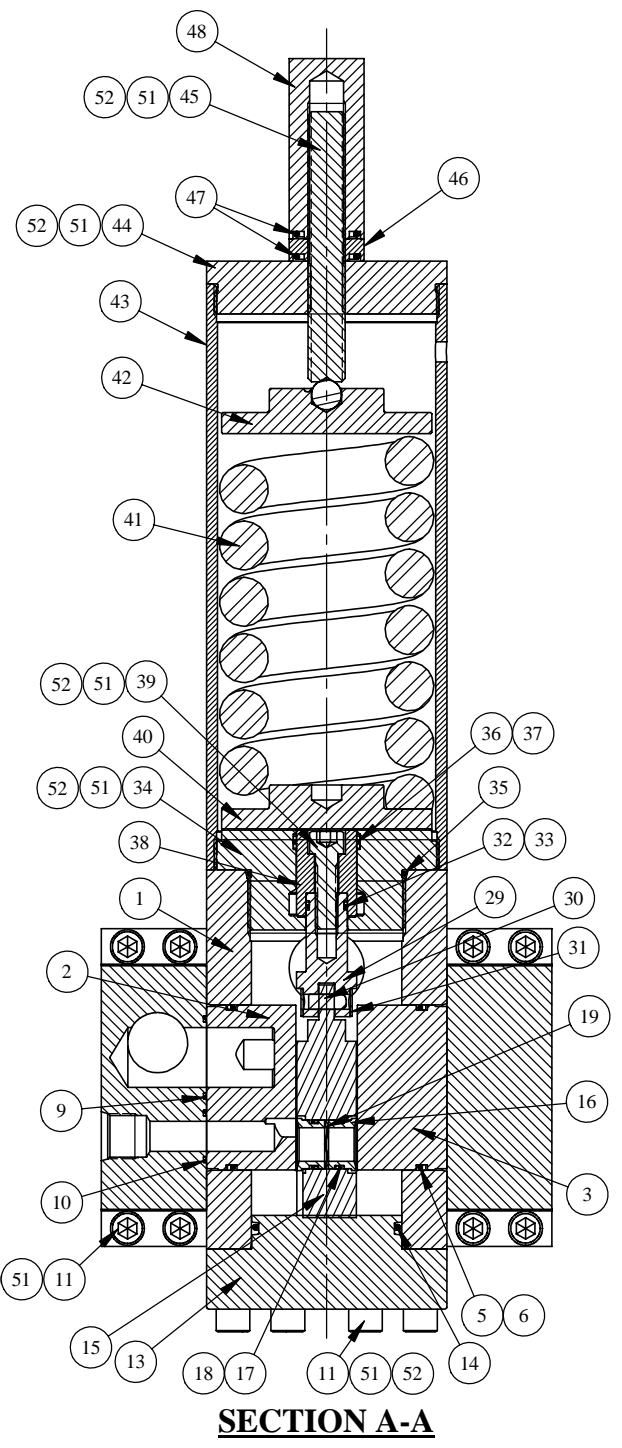
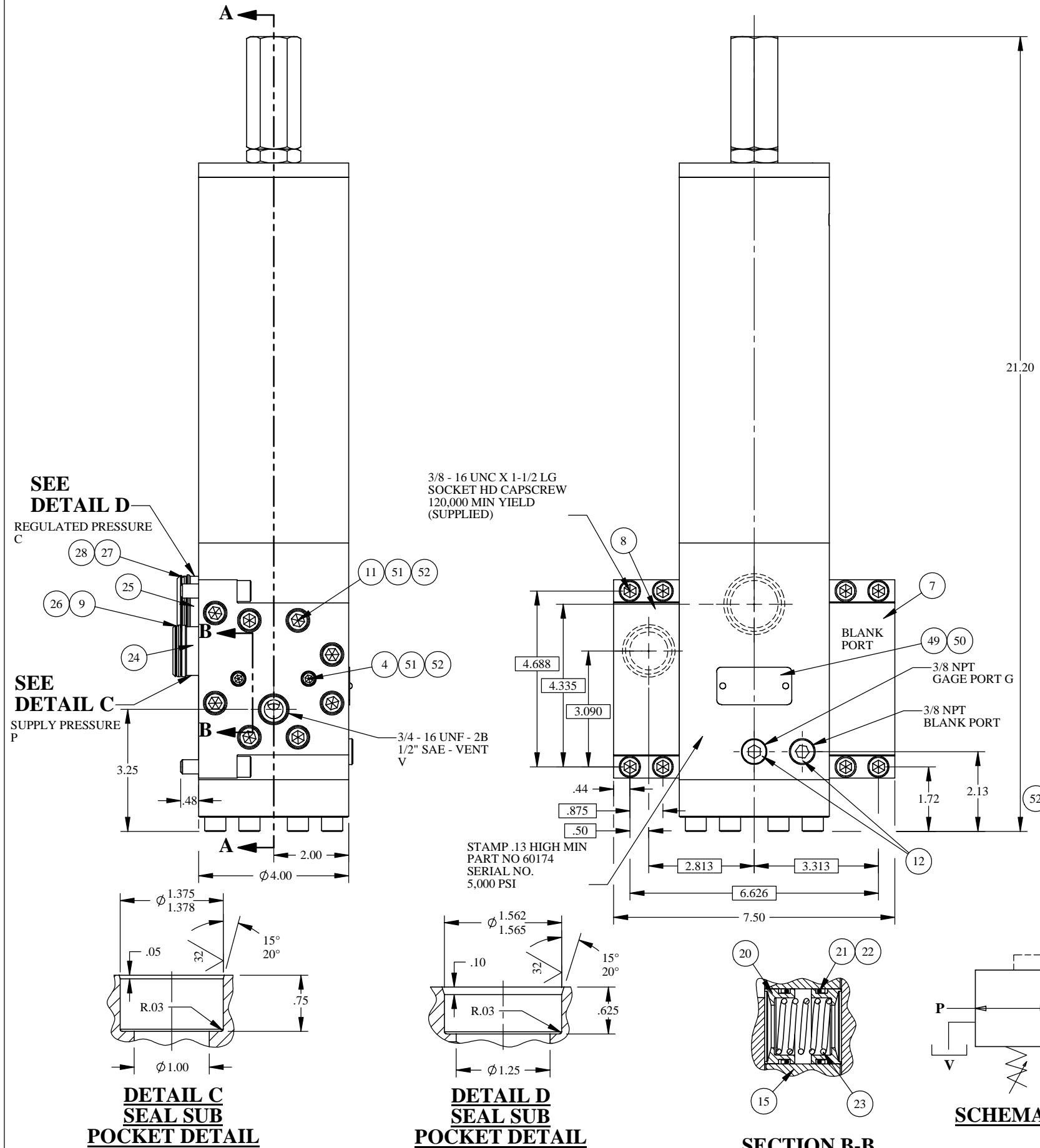


REV	ECN/ERN NO.	DRWN	CHKD	APPD
H	ECN 2035	WRC 1/9/01	HH 1/25/01	HH 1/25/01



△ H

△ H

ITEM NO.	QTY.	PART NO.	DESCRIPTION	RK	SK
1	1	33134	BODY		
2	1	13057	FLOW PORT	X	
3	1	13056	PLATE	X	
4	4	18220-118S	S.H.C.S., 1/4-20 UNC X 1-3/4	X	X
5	2	18100-051C	O-RING, 2-3/4 x 2-9/16 x 3/32	X	X
6	2	18110-130T	BACKUP RING, 2-3/4 x 2-9/16 x .056	X	X
7	1	23819	FLANGE, RIGHT		
8	1	23799	INLET FLANGE, LEFT		
9	3	18100-002B	O-RING, 1-3/8 x 1-1/4 x 1/16	X	X
10	1	18100-007B	O-RING, 7/8 x 3/4 x 1/16	X	X
11	32	18224-003	S.H.C.S., 3/8-16 UNC X 1-1/2		
12	2	18601-008	PIPE PLUG, HEX SOC, SS, 3/8\" NPT		
13	1	12994	BOTTOM FLANGE		
14	1	18100-101B	O-RING, 2-1/2 x 2-1/4 x 1/8	X	X
15	1	22187	SEAL CONTAINER		
16	2	11512	SEAL RING	X	
17	2	18100-009B	O-RING, 13/16 x 11/16 x 1/16	X	X
18	2	18110-005T	BACKUP RING, 13/16 x 11/16 x .05	X	X
19	1	18701-001	WAVE SPRING	X	
20	4	11420	SEAL RING	X	
21	4	18100-003B	O-RING, 1 x 7/8 x 1/16	X	X
22	4	18110-002T	BACKUP RING, 1 x 7/8 x .05	X	X
23	2	11438	SPRING, COMPRESSION	X	
24	1	12528	SEAL SUB, 1"		
25	1	12966	SEAL SUB, 1-1/4"		
26	2	18110-026T	BACKUP RING, 1-3/8 x 1-1/4 x .05	X	X
27	2	18100-038B	O-RING, 1-1/2 x 1-3/8 x 1/16	X	X
28	2	18110-020T	BACKUP RING, 1-1/2 x 1-3/8 x .05	X	X
29	1	12983	PLUNGER STEM		
30	1	18500-009	DOWEL PIN, 1/4 X 5/8		
31	1	11808	RETAINER SLEEVE		
32	1	18100-022B	O-RING, 11/16 x 9/16 x 1/16	X	X
33	1	18110-013T	BACKUP RING, 11/16 x 9/16 x .05	X	X
34	1	12975	PLUNGER GUIDE		
35	1	18100-099B	O-RING, 2-11/16 x 2-1/2 x 3/32	X	X
36	1	18100-029B	O-RING, 1-1/8 x 1 x 1/16	X	X
37	2	13135	BACKUP RING, 1-1/8 x 1 x .079	X	X
38	1	12942	PISTON PLUNGER		
39	1	18224-002	S.H.C.S., 3/8-16 UNC X 1-1/4		
40	1	12970	SPRING PLATE		
41	1	12968	SPRING, COMPRESSION		
42	1	12973	SPRING GUIDE		
43	1	23796	SPRING HOUSING		
44	1	12971	PLUG		
45	1	11910	ADJUSTING SCREW		
46	1	11580	O' LOCK NUT		
47	2	18100-113B	O-RING, 1-1/8 x 7/8 x 1/8	X	X
48	1	11567	LOCK CAP		
49	1	12225	NAME TAG		
50	2	21082-002	SCREW, DRIVE		
51	A/R	25822	ANTI SEIZE		
52	4	25822-1	ANTI SEIZE	X	X

CALCULATED Cv = 9.4 SUPPLY  
Cv = 1.4 VENT

△ H

	FITTING	WORKING PRESSURE
SUPPLY P	SEAL SUB (1)	5,000 PSI
REGULATED C	SEAL SUB (1)	3,000 PSI
VENT V	1/2" SAE (3/4 - 16 UNF)	5,000 PSI
GAGE PORT G	3/8 NPT	3,000 PSI

WEIGHT - 61 LBS  
PATENT NO. 4,493,335  
MATERIAL: STAINLESS STEEL, BUNA-N, TEFLON

**GILMORE VALVE CO.**  
1231 LUMPKIN RD.  
HOUSTON, TX. 77043

SEAL SUB MOUNTED HYDRAULIC PRESSURE REGULATOR

MATERIAL	REFER TO INDIV BOM ITEMS	TOLERANCES:	DRWN BY	DATE
TREATMENT	CONDITION	DECIMALS: X ± .1	WRC	7/14/00
PROC. NO.		FRACTIONS: XX ± .01	CHKD BY	DATE
		ANGLES: XXX ± .005	RCH	8/3/00
		DEBURR	APPD BY	DATE
		BREAK SHARP EDGES .010	RCH	8/3/00
		INTERNAL RADIUS .015	ERN NO.	DATE
		FINISH: 63		

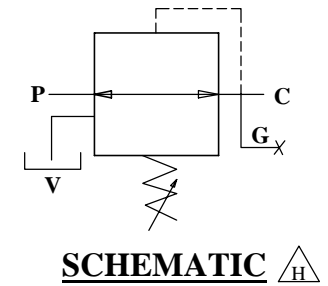
THE INFORMATION CONTAINED IN THIS DRAWING IS THE SOLE PROPERTY OF GILMORE VALVE CO. UNLESS OTHERWISE STATED, ANY REPRODUCTION IN PART OR WHOLE WITHOUT THE WRITTEN PERMISSION OF GILMORE VALVE CO. IS PROHIBITED.

UNLESS OTHERWISE SPECIFIED: DIMENSIONS ARE IN INCHES, DO NOT SCALE DRAWING. INTERPRET DIM. & TOL. PER ASME Y14.5M - 1994.

SIZE C DWG NO. 60174 REV H  
SCALE NTS SOLIDWORKS SHEET 1 OF 2

2. X DEPICTS PARTS IN REPAIR KIT 60174 RK AND SEAL KIT 60174 SK  
NOTES: 1. LOCATE SEAL SUB POCKETS AND MOUNTING SCREW HOLES WITHIN .010 OF TRUE POSITION

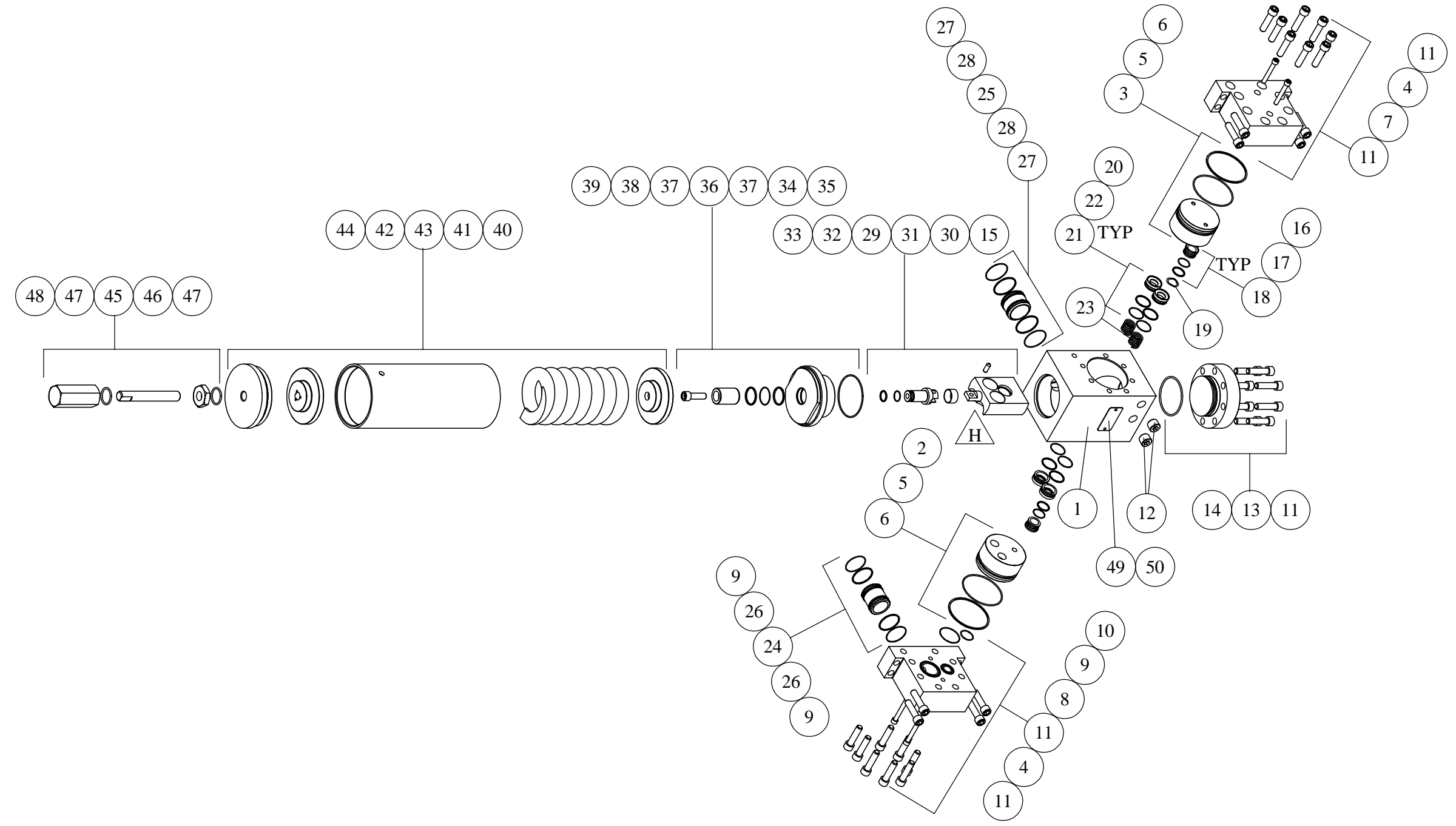
**SECTION B-B  
SUPPLY PORT**



**DETAIL C  
SEAL SUB  
POCKET DETAIL**

**DETAIL D  
SEAL SUB  
POCKET DETAIL**

REV	ECN/ERN NO.	DRWN	CHKD	APPD
H	ECN 2035	WRC 1/9/01	HH 1/25/01	HH 1/25/01



NOTE: 1. THIS EXPLODED ISOMETRIC VIEW ON SHEET 2 OF THE DRAWING IS A GRAPHICAL REPRESENTATION TO ASSIST IN INITIAL ASSEMBLY OR RE-WORK DISASSEMBLY & RE-ASSEMBLY. FINAL INSPECTION AND TEST SHOULD ALWAYS REFER TO SHEET 1 OF THIS DRAWING.

MATERIAL REFER TO INDIV BOM ITEMS		UNLESS OTHERWISE SPECIFIED TOLERANCES: DECIMALS   FRACTIONS   ANGLES .X ± .1   ± 1/32   ± 1° .XX ± .01 .XXX ± .005		DRWN BY <b>WRC</b>	DATE 7/14/00	<b>GILMORE VALVE CO.</b> 1231 LUMPKIN RD. HOUSTON, TX. 77043		
TREATMENT	CONDITION	DEBURR BREAK SHARP EDGES .010 INTERNAL RADIUS .015 FINISH 63	CHKD BY <b>RCH</b>	DATE 8/3/00				
NA	NA	DIMENSIONS ARE IN INCHES DO NOT SCALE DRAWING INTERPRET DIM. & TOL. PER ASME Y14.5M - 1994	APPD BY <b>RCH</b>	DATE 8/3/00	SEAL SUB MOUNTED HYDRAULIC PRESSURE REGULATOR			
PROC. NO.			ERN NO.					
THE INFORMATION CONTAINED IN THIS DRAWING IS THE SOLE PROPERTY OF GILMORE VALVE CO. UNLESS OTHERWISE STATED. ANY REPRODUCTION IN PART OR WHOLE WITHOUT THE WRITTEN PERMISSION OF GILMORE VALVE CO. IS PROHIBITED.						SIZE <b>B</b>	DWG NO. <b>60174</b>	REV <b>H</b>
						SCALE   NTS	SOLIDWORKS	SHEET 2 OF 2