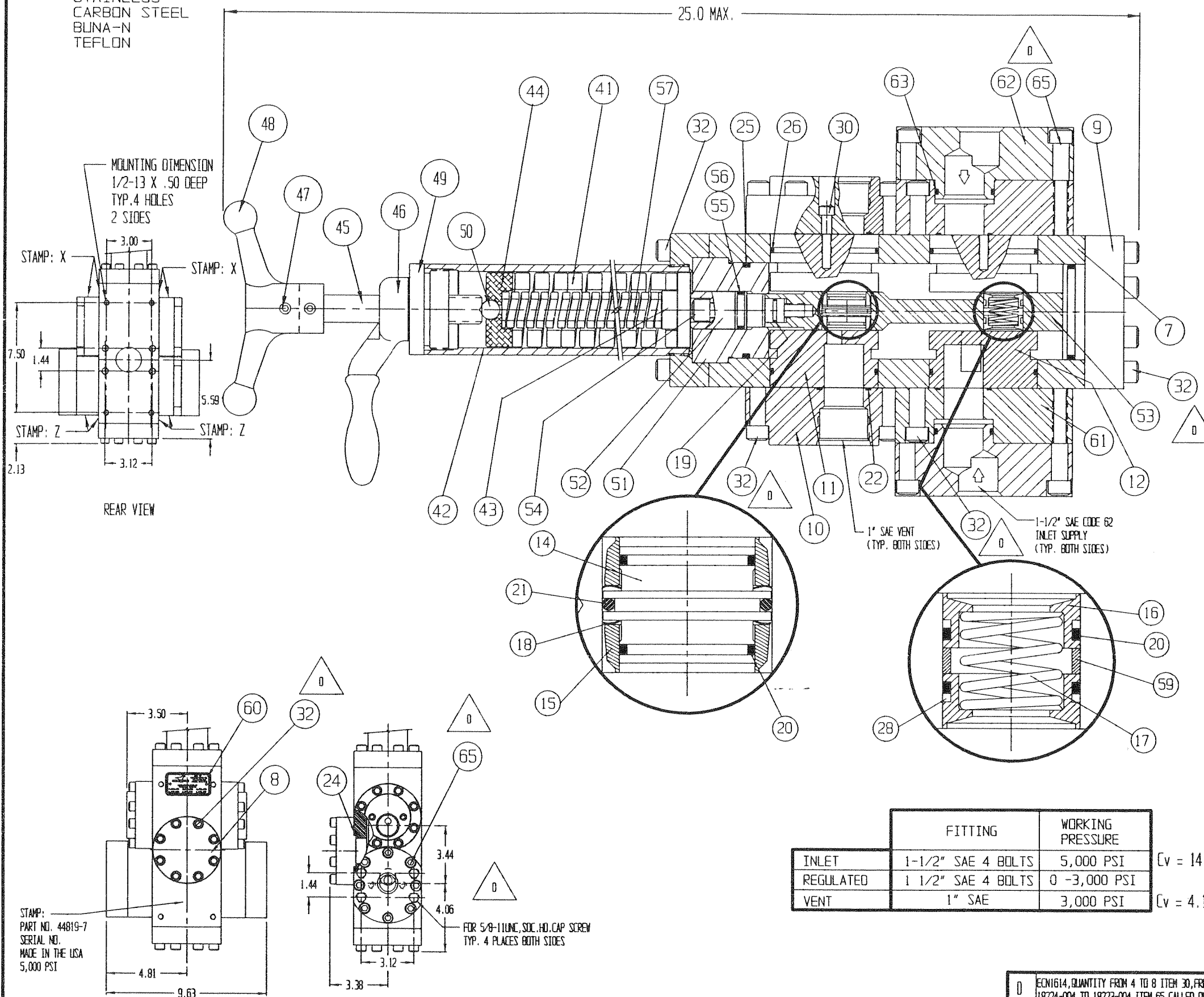


APPROX. WEIGHT 75 LBS.

o - CONTAINED IN REPAIR KIT: 44819-7RK
 * - CONTAINED IN SEAL KIT: 44819-7SK

MATERIALS :

STAINLESS
 CARBON STEEL
 BRUNA-N
 TEFLON



ITEM	PART NO.	DESCRIPTION	REQ. Q.
7	24129	VALVE BODY	1
8	13256	FLANGE BLIND	1
9	12994	FLANGE	1
10	24073	FLANGE	2
o 11	22432	FLOW PORT	2
o 12	22433	FLOW PORT	2
o 14	11708	VALVE CAGE	1
o 15	11709	OLMP SEAL	2
o 16	11420	SEAL RING	4
o 17	11438	SPRING	2
o 18	18720-002	SPRING WASHER	2
* o 19	18100-006B	"O"RING	1
* o 20	18100-003B	"O"RING	6
* o 21	18100-057C	"O"RING	1
* o 22	18100-002C	"O"RING	4
* o 24	18100-102B	"O"RING	1
* o 25	18100-101B	"O"RING	2
* o 26	18100-051B	"O"RING	4
* o 28	18110-002T	BACK-UP RING	4
* o 30	18221-005G	SOC. HD. CAP SCR., 1/4 - 20 X 7/8 LG.	8
32	18224-003	SOC. HD. CAP SCR., 3/8 - 16 X 1-1/2 LG.	56
41	11605-2	COMPRESSION SPRING	1
42	22620	ADJUSTMENT HEAD ASS'Y	1
43	11442	SPRING PLATE	1
44	11448	TOP SPRING GUIDE	1
45	11052	ADJUSTING SCREW	1
46	11223	LOCK HANDLE	1
47	18240-003	SET SCREW, 1/4-20 x 3/8 LG.	2
48	22150	BALL HANDLE	1
49	11446	SEALING PLUG	1
50	18800-001	STEEL BALL	1
51	13242	CYLINDER	1
52	13241	PISTON	1
53	24005	SEAL CONTAINER	1
54	18220-019S	SOC. HD. CAP SCR. 3/8 16 X 2 1/2 LG.	1
* o 55	18100-074B	"O"RING	1
* o 56	18110-115T	BACK-UP RING	1
57	11604	COMPRESSION SPRING	1
o 59	12109	SPACER	2
60	12225	NAME TAG	1
61	24045	INLET FLANGE ADAPTOR, 1-1/2" S.W.	2
62	24130	ADAPTOR, 1-1/2" SAE CODE 62 FLANGE	2
* o 63	18100-052C	"O"RING, 1-1/2 x 1-5/16 x 3/32	2
65	18223-004	SOC. HD. CAP SCR. 3/8 -16 X 1-3/4 LG.	16

	FITTING	WORKING PRESSURE	
INLET	1-1/2" SAE 4 BOLTS	5,000 PSI	Cv = 14.9
REGULATED	1 1/2" SAE 4 BOLTS	0 -3,000 PSI	
VENT	1" SAE	3,000 PSI	Cv = 4.1

NAME OF PART HYDRAULIC PRESSURE REGULATOR (0-3000PSI)

GILMORE VALVE COMPANY
 HOUSTON, TEXAS

DATE - 5-18-99 REFERENCE

SCALE - FULL

DR. BY - JOSE DRAWING NO. 44819-7

C'K'D BY -

APP'D BY - TMB

NO.	REVISIONS	DATE	DR.	CK.
0	ECN1614, QUANTITY FROM 4 TO 8 ITEM 30, FROM 18224-004 TO 18223-004 ITEM 65 CALLED OUT	7-10-99	JOSE	

STAMP: PART NO. 44819-7
 SERIAL NO.
 MADE IN THE USA
 5,000 PSI