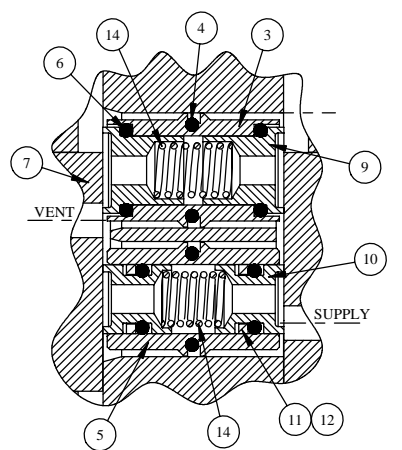
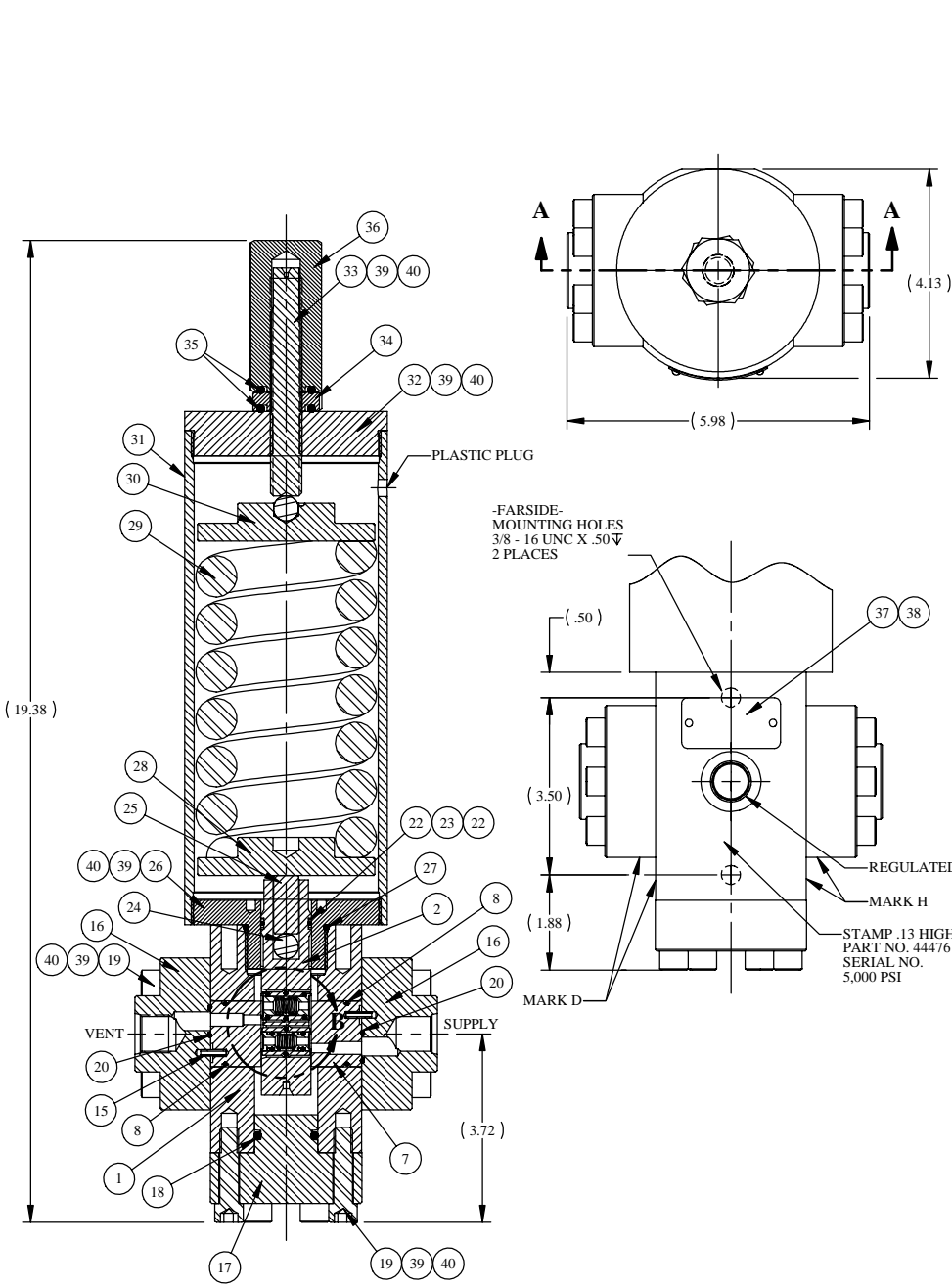
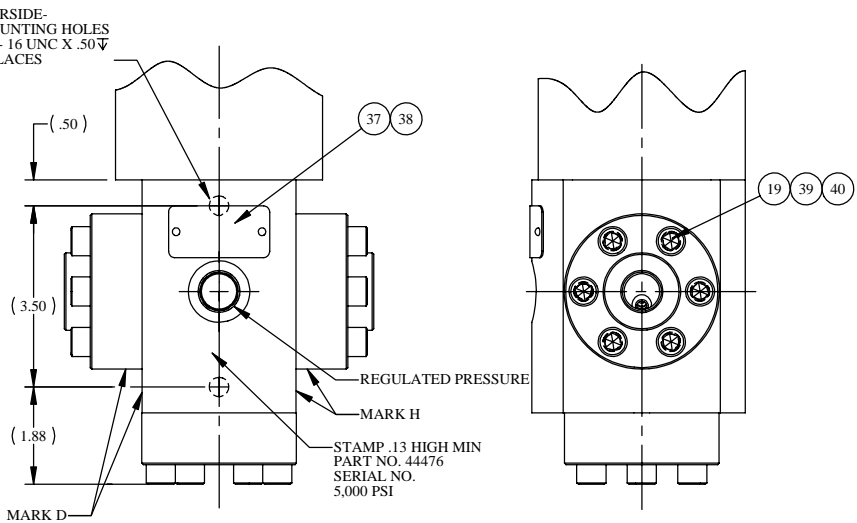


REV	ECN/ERN NO.	DRWN	CHKD	APPD
E	ECN 1961	WRC 9/28/00	RCH 10/10/00	RCH 10/10/00



DETAIL B



ITEM NO.	QTY.	PART NO.	DESCRIPTION	RK	SK
1	1	33010-18	BODY		
2	1	11599	SEAL CONTAINER	X	
3	1	11662	SEAL CAGE, OUTLET	X	
4	2	18100-013W	O-RING	X	X
5	1	11661	SEAL CAGE, INLET	X	
6	2	18100-004B	O-RING	X	X
7	2	12573	FLOW PLATE (VENT)	X	
8	2	18100-012B	O-RING	X	X
9	2	11592	HYDRO SEAL, VENT	X	
10	2	11593	HYDRO SEAL, SUPPLY	X	
11	2	18110-006T	BACKUP RING	X	X
12	2	18100-008B	O-RING	X	X
13	4	18221-006G	S.H.C.S., #8-32 UNC X 5/8	X	X
14	2	11600	SPRING, COMPRESSION		
15	2	18510-006	SPRING PIN, 1/8 X 1/2		
16	2	12575	FLOW PLATE FLANGE		
17	1	12564	BOTTOM FLANGE		
18	1	18100-107B	O-RING	X	X
19	18	18220-002S	S.H.C.S., 3/8-16 UNC X 1-1/2		
20	2	18100-006B	O-RING	X	X
21	4	18100-011B	O-RING	X	X
22	2	18110-002T	BACKUP RING	X	X
23	1	18100-003B	O-RING	X	X
24	1	18800-001	BALL, 1/2", .440C		
25	1	13043	SPACER		
26	1	12941	PLUNGER GUIDE		
27	1	18100-619B	O-RING	X	X
28	1	12970	SPRING PLATE		
29	1	12968	SPRING, COMPRESSION		
30	1	12973	SPRING GUIDE		
31	1	23796	SPRING HOUSING		
32	1	12971	PLUG		
33	1	11910	ADJUSTING SCREW		
34	1	11580	O' LOCK NUT		
35	2	18100-113B	O-RING	X	X
36	1	11567	LOCK CAP		
37	1	12225	NAME TAG		
38	2	21082-002	SCREW, DRIVE		
39	A/R	25822	ANTI SEIZE		
40	1	25822-1	ANTI SEIZE	X	X

	FITTING	WORKING PRESSURE
INLET	1/2 SAE	5,000 PSI
REGULATED	1/2 SAE	3,000 PSI
VENT	1/2 SAE	3,000 PSI

MATERIAL
STAINLESS STEEL
BUNA-N
VITON
TEFLON

CALCULATED Cv = .53 SUPPLY
Cv = .53 VENT

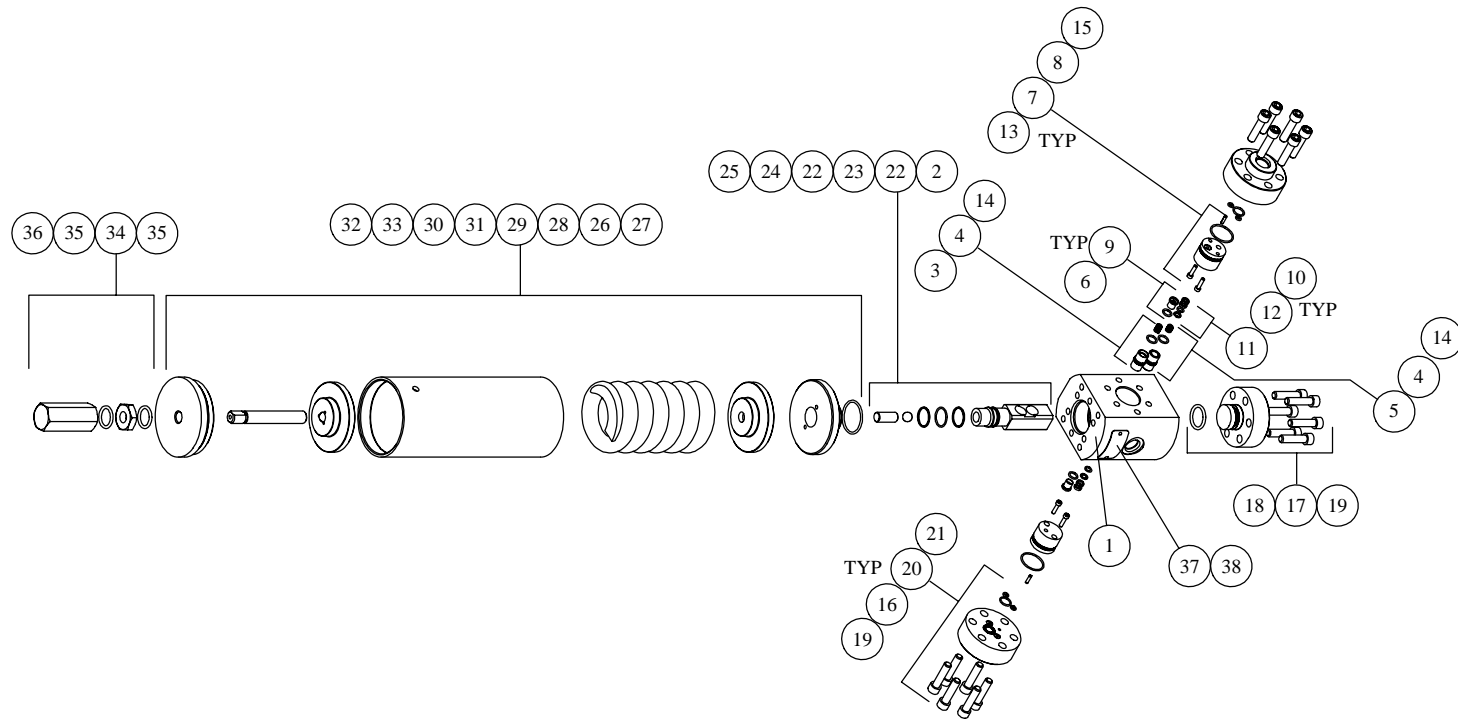
WEIGHT - 42 LBS
PATENT NO. 3,917,220

SECTION A-A

2. X DEPICTS PARTS IN REPAIR KIT 44476 RK AND SEAL KIT 44476 SK
NOTES: 1. LOCATE SEAL SUB POCKETS AND MOUNTING SCREW HOLES WITHIN .010 OF TRUE POSITION

MATERIAL REFER TO INDIV BOM ITEMS	UNLESS OTHERWISE SPECIFIED TOLERANCES: FRACTIONS DECIMALS ANGLES .005 .010 .015 .030 .060 .125 .250 .500 .750 1.000 1.500 2.000 3.000 4.000 5.000 6.000 8.000 10.000 12.000 15.000 20.000 25.000 30.000 40.000 50.000 60.000 80.000 100.000	DRWN BY WRC	DATE 9/28/00	GILMORE VALVE COMPANY 1231 LUMPKIN RD. HOUSTON, TX. 77043 HYDRAULIC PRESSURE REGULATOR 1/2 SAE
TREATMENT NA	CONDITION NA	CHKD BY RCH	DATE 10/10/00	
APPD BY RCH	DATE 10/10/00	ERN NO.	DATE	
PROC. NO.				
THE INFORMATION CONTAINED IN THIS DRAWING IS THE SOLE PROPERTY OF GILMORE VALVE CO. UNLESS OTHERWISE NOTED. ANY REPRODUCTION IN PART OR WHOLE WITHOUT THE WRITTEN PERMISSION OF GILMORE VALVE CO. IS PROHIBITED.		DIMENSIONS ARE IN INCHES DO NOT SCALE DRAWING BULKHEADS & TOL. PER ASME Y14.2M-1994		SHEET C SCALE NTS
		DWG NO. 44476		REV E
		SHEET 1 OF 2		

REV	ECN/ERN NO.	DRWN	CHKD	APPD
E	ECN 1961	WRC 9/28/00	RCH 10/10/00	RCH 10/10/00



NOTES: 1. THIS EXPLODED ISOMETRIC VIEW ON SHEET 2 OF THE DRAWING IS A GRAPHICAL REPRESENTATION TO ASSIST IN INITIAL ASSEMBLY OR RE-WORK DISASSEMBLY & RE-ASSEMBLY. FINAL INSPECTION AND TEST SHOULD ALWAYS REFER TO SHEET 1 OF THIS DRAWING.

MATERIAL REFER TO INDIV BOM ITEMS		UNLESS OTHERWISE SPECIFIED TOLERANCES: DECIMALS FRACTIONS ANGLES X ± .1 ± 1/32 ± ° .XX ± .01 .XXX ± .005		DRWN BY WRC	DATE 9/28/00	GILMORE VALVE COMPANY 1231 LUMPKIN RD. HOUSTON, TX. 77043	
TREATMENT NA	CONDITION NA	DEBURR BREAK SHARP EDGES 0.10 FINISH $\sqrt{\text{ }}$	CHKD BY RCH	DATE 10/10/00	HYDRAULIC PRESSURE REGULATOR 1/2 SAE		
PROC. NO.		DIMENSIONS ARE IN INCHES DO NOT SCALE DRAWING INTERPRET DIM. & TOL. PER ASME Y14.5M - 1994	APPD BY RCH	DATE 10/10/00			SIZE B
			ERN NO.		SCALE NTS	SOLIDWORKS	SHEET 2 OF 2