

REV	ECN/ERN NO.	DRWN	CHKD	APPD
G	ECN 2399	JOSE 5/9/02	DSN 5/30/02	TBT 6/3/02

ITEM NO.	QTY.	PART NO.	DESCRIPTION	RK	SK
1	1	33010-17	BODY		
2	1	11599	SEAL CONTAINER	X	
3	1	11662	SEAL CAGE, OUTLET	X	
4	2	18100-013W	O-RING	X	X
5	1	11661	SEAL CAGE, INLET	X	
6	2	18100-004B	O-RING	X	X
7	2	12573	FLOW PLATE (VENT)	X	
8	2	18100-012B	O-RING	X	X
9	2	11592	HYDRO SEAL, VENT	X	
10	2	11593	HYDRO SEAL, SUPPLY	X	
11	2	18110-006T	BACKUP RING	X	X
12	2	18100-008B	O-RING	X	X
13	4	18221-006G	S.H.C.S., #8-32 UNC X 5/8	X	X
14	2	11600	SPRING, COMPRESSION		
15	2	18510-006	SPRING PIN, 1/8 X 1/2		
16	1	23805	SUB PLATE FLANGE		
17	1	12575	FLOW PLATE FLANGE		
18	2	12974	SEAL SUB, 3/8"		
19	4	18110-004T	BACKUP RING	X	X
20	7	18100-006B	O-RING	X	X
21	1	12564	BOTTOM FLANGE		
22	1	18100-107B	O-RING	X	X
23	22	18220-002S	S.H.C.S., 3/8-16 UNC X 1-1/2		
24	4	18100-011B	O-RING	X	X
25	2	18110-002T	BACKUP RING	X	X
26	1	18100-003B	O-RING	X	X
27	1	18800-001	BALL, 1/2", 440C		
28	1	13043	SPACER		
29	1	12941	PLUNGER GUIDE		
30	1	18100-619B	O-RING	X	X
31	1	12970	SPRING PLATE		
32	1	12968	SPRING, COMPRESSION		
33	1	12973	SPRING GUIDE		
34	1	23796	SPRING HOUSING		
35	1	12971	PLUG		
36	1	11910	ADJUSTING SCREW		
37	1	11580	O' LOCK NUT		
38	2	18100-113B	O-RING	X	X
39	1	11567	LOCK CAP		
40	1	12225	NAME TAG		
41	2	21082-002	SCREW, DRIVE		
42	A/R	25822	ANTI SEIZE		
43	1	25822-1	ANTI SEIZE	X	X

△ G

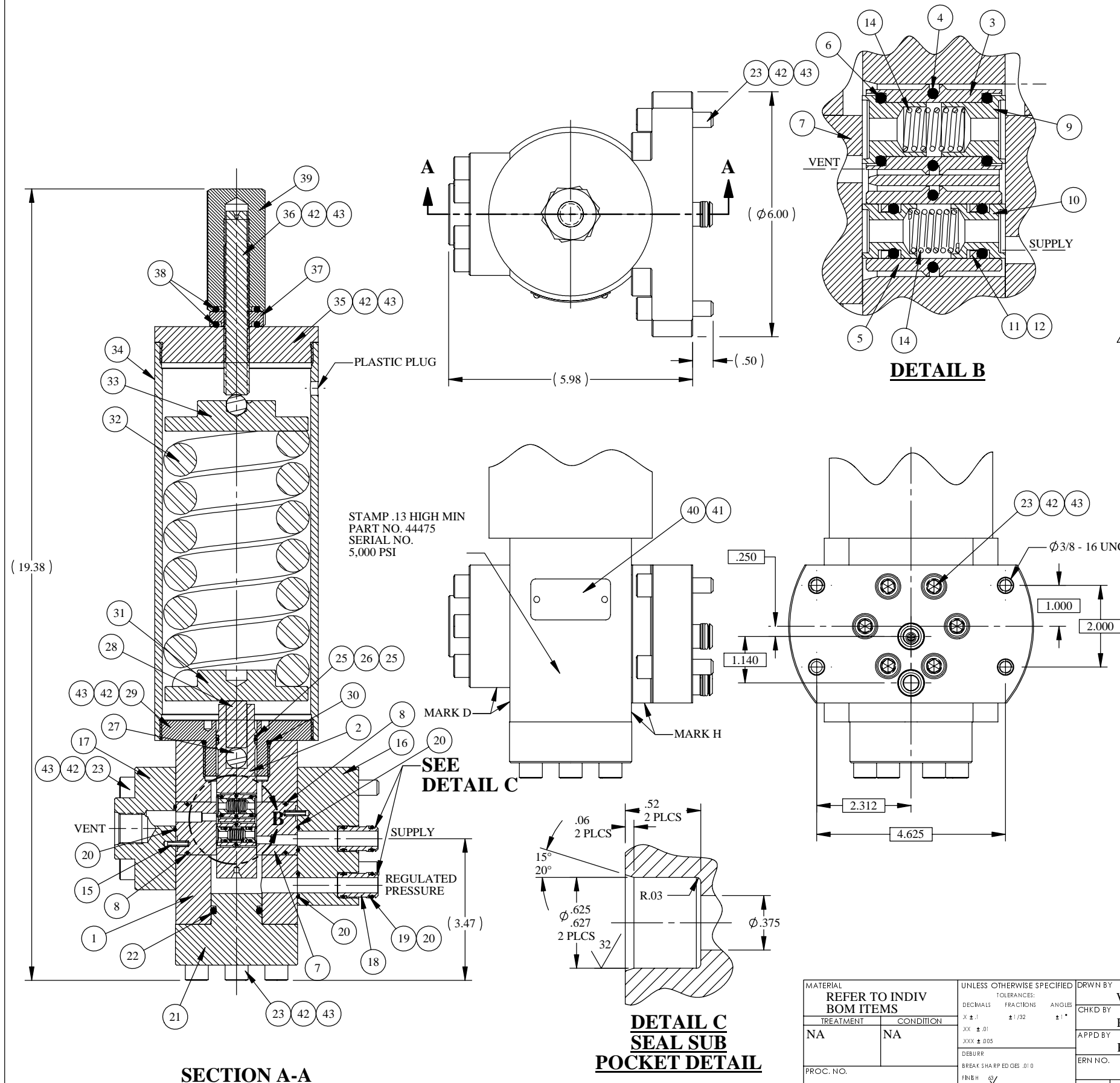
	FITTING	WORKING PRESSURE
INLET	SEAL SUB (1)	5,000 PSI
REGULATED	SEAL SUB (1)	3,000 PSI
VENT	1/2 SAE	3,000 PSI

MATERIAL:
STAINLESS STEEL
BUNA-N
VITON
TEFLON

CALCULATED Cv = .53 SUPPLY
Cv = .53 VENT

WEIGHT - 47 LBS

PATENT NO. 3,917,220



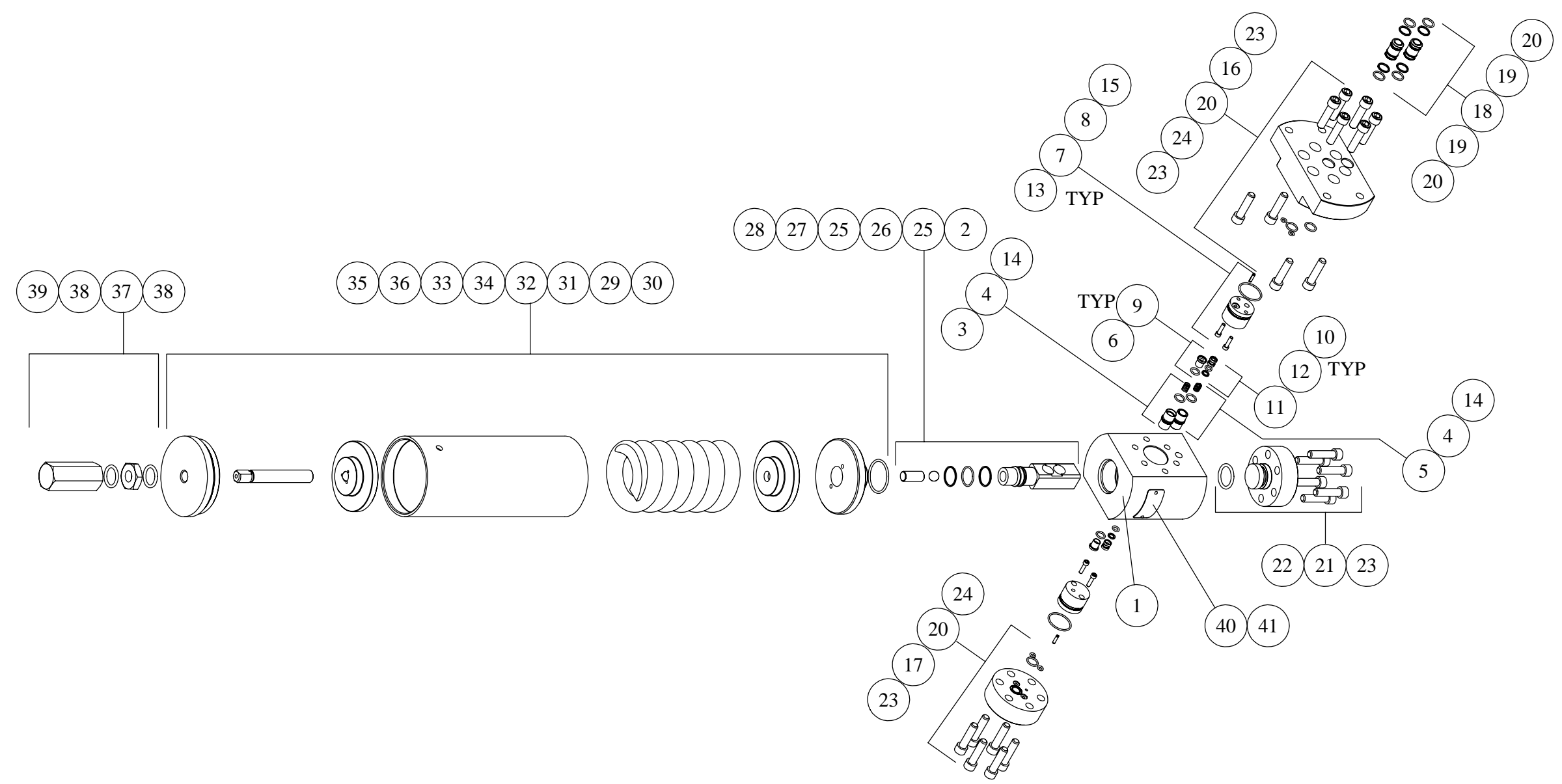
2. X DEPICTS PARTS IN REPAIR KIT 44475 RK AND SEAL KIT 44475 SK
NOTES: 1. LOCATE SEAL SUB POCKETS AND MOUNTING SCREW HOLES WITHIN .010 OF TRUE POSITION

MATERIAL	UNLESS OTHERWISE SPECIFIED	DRWN BY	DATE
REFER TO INDIV BOM ITEMS	TOLERANCES:	WRC	9/26/00
TREATMENT	DECIMALS FRACTIONS ANGLES	CHKD BY	DATE
NA	X ± .1 ± 1/32 ± 1°	RCH	10/9/00
CONDITION	XX ± .01 ± 1/32 ± 1°	APPD BY	DATE
NA	XXX ± .005 ± 1/32 ± 1°	RCH	10/9/00
PROC. NO.	DEBURR	ERN NO.	DATE
	BREAK SHARP EDGES .010		
	FINEH		
	DIMENSIONS ARE IN INCH		
	DO NOT SCALE DRAWING		
	INTERPRET DIM. & TOL. PER ASME Y14.5M - 1994		

SIZE	DWG NO.	REV
C	44475	G
SCALE	NTS	SHEET 1 OF 2

GILMORE VALVE COMPANY	
1231 LUMPKIN RD. HOUSTON, TX. 77043	
HYDRAULIC PRESSURE REGULATOR SEAL SUB MOUNTED	
SIZE	DWG NO.
C	44475
SCALE	NTS
SOLIDWORKS	SHEET 1 OF 2

REV	ECN/ERN NO.	DRWN	CHKD	APPD
G	ECN 2399	JOSE' 5/9/02	DSN 5/30/02	TBT 6/3/02



NOTES: 1. THIS EXPLODED ISOMETRIC VIEW ON SHEET 2 OF THE DRAWING IS A GRAPHICAL REPRESENTATION TO ASSIST IN INITIAL ASSEMBLY OR RE-WORK DISASSEMBLY & RE-ASSEMBLY. FINAL INSPECTION AND TEST SHOULD ALWAYS REFER TO SHEET 1 OF THIS DRAWING.

MATERIAL REFER TO INDIV BOM ITEMS		UNLESS OTHERWISE SPECIFIED TOLERANCES: DECIMALS FRACTIONS ANGLES .X ± .1 ± 1/32 ± 1° .XX ± .01 .XXX ± .005		DRWN BY WRC	DATE 9/26/00	GILMORE VALVE COMPANY 1231 LUMPKIN RD. HOUSTON, TX. 77043		
TREATMENT	CONDITION	DEBURR BREAK SHARP EDGES .010 FINISH 63/	CHKD BY RCH	DATE 10/9/00	HYDRAULIC PRESSURE REGULATOR SEAL SUB MOUNTED			
NA	NA	DIMENSIONS ARE IN INCHES DO NOT SCALE DRAWING INTERPRET DIM. & TOL. PER ASME Y14.5M - 1994	APPD BY RCH	DATE 10/9/00				SIZE B
PROC. NO.			ERN NO.		SCALE NTS	SOLIDWORKS	SHEET 2 OF 2	