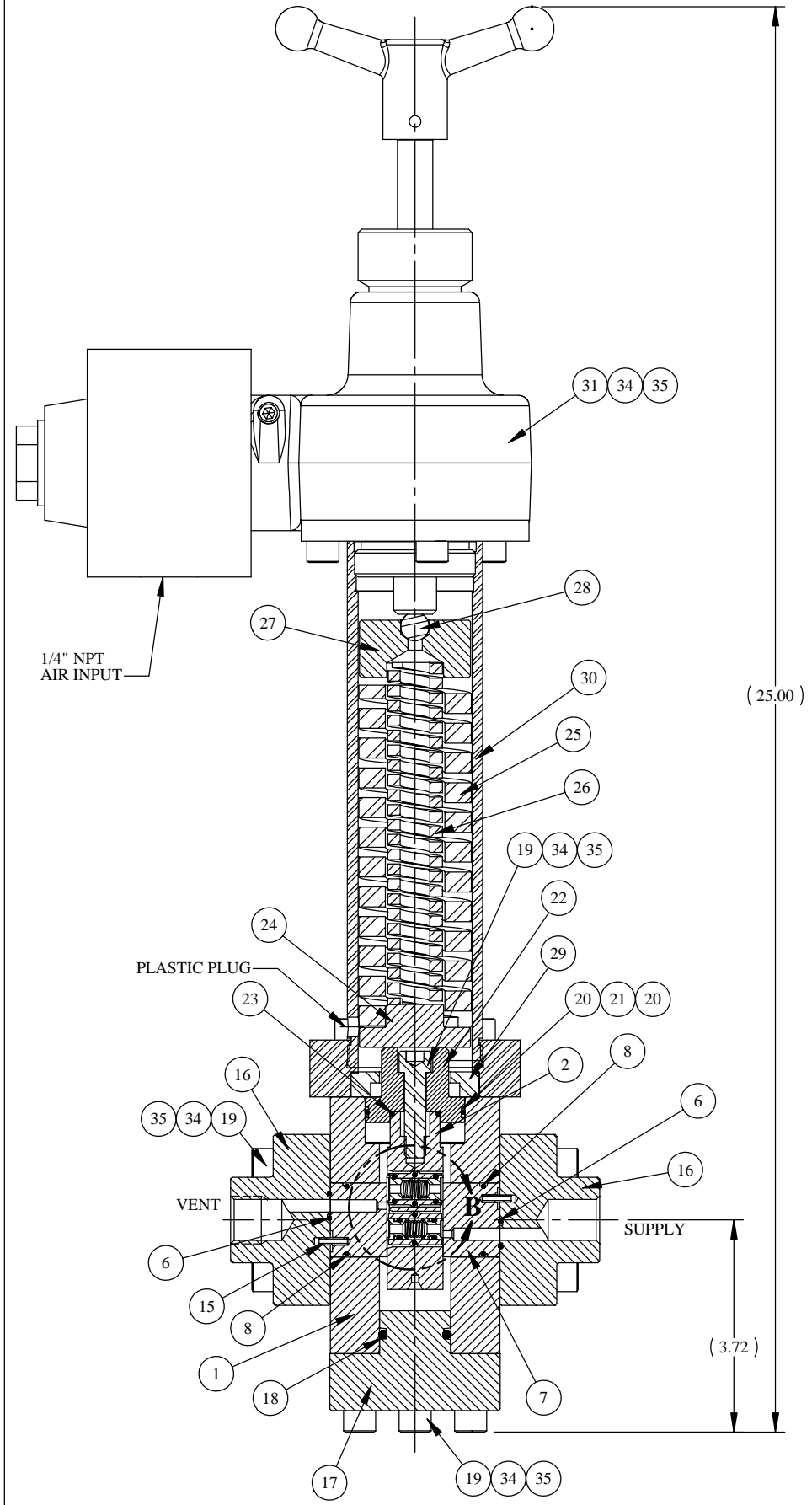
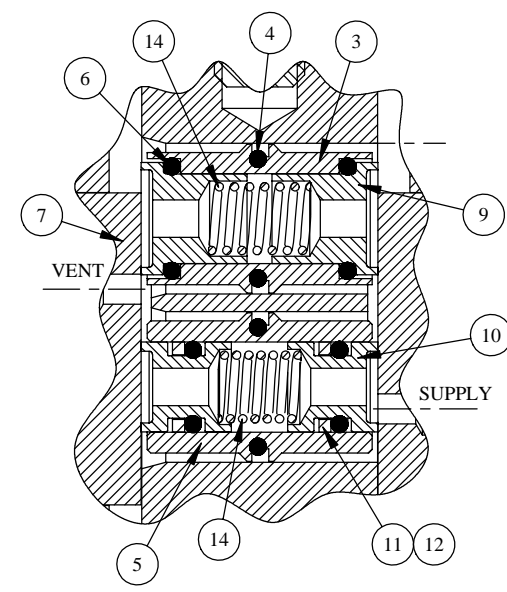
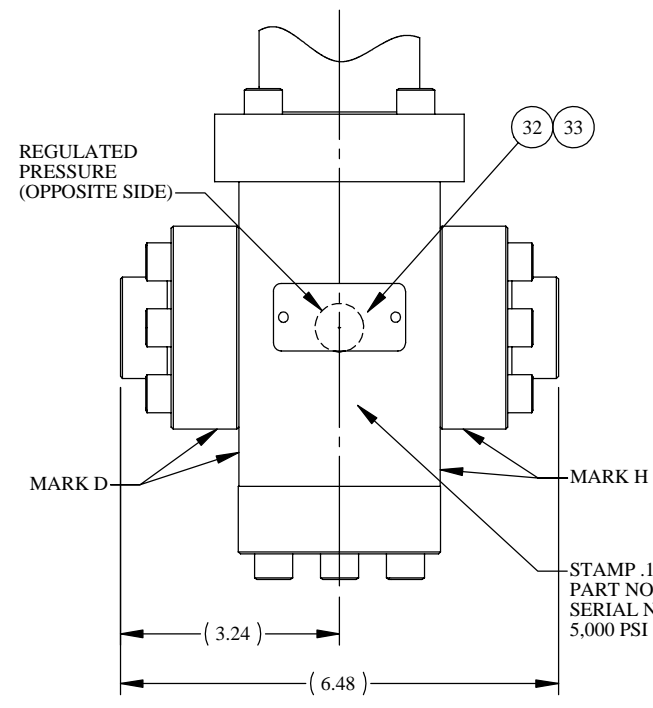
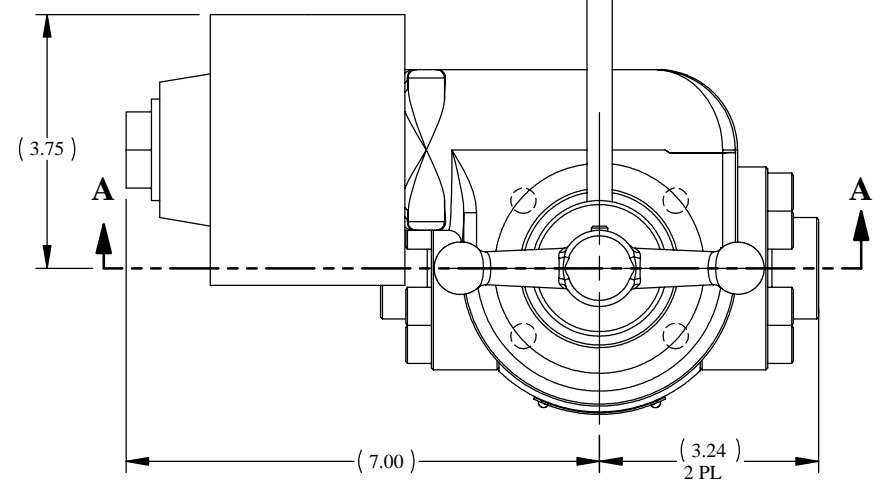
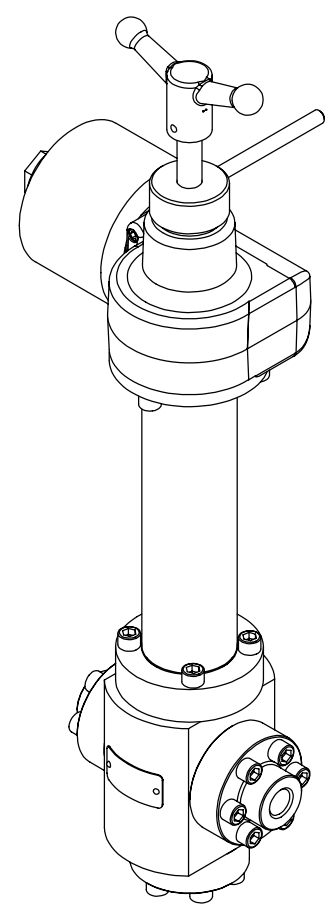


REV	ECN/ERN NO.	DRWN	CHKD	APPD
U	ECN 2650	WRC 6/6/03	DSN 6/10/03	TBT 6/10/03



**SECTION A-A**

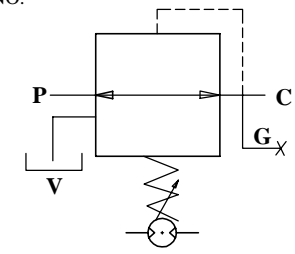


**DETAIL B**

ITEM NO.	QTY.	PART NO.	DESCRIPTION	RK	SK
1	1	23335	BODY		
2	1	12517	SEAL CONTAINER	X	
3	1	11662	SEAL CAGE, OUTLET	X	
4	2	18100-013W	O-RING	X	X
5	1	11661	SEAL CAGE, INLET	X	
6	4	18100-004B	O-RING	X	X
7	2	11594	FLOW PLATE (VENT)	X	
8	2	18100-012B	O-RING	X	X
9	2	11592	HYDRO SEAL, VENT	X	
10	2	11593	HYDRO SEAL, SUPPLY	X	
11	2	18110-006T	BACKUP RING	X	X
12	6	18100-008B	O-RING	X	X
13	4	18221-004G	S.H.C.S., #10-24 UNC X 3/4	X	X
14	2	11600	SPRING, COMPRESSION	X	
15	2	18510-006	SPRING PIN, 1/8 X 1/2		
16	2	11596	FLOW PLATE FLANGE		
17	1	11598	BOTTOM FLANGE		
18	1	18100-107B	O-RING	X	X
19	23	18220-002A	S.H.C.S., 3/8-16 UNC X 1-1/2		
20	2	18110-024T	BACKUP RING	X	X
21	1	18100-040B	O-RING	X	X
22	1	12516	PLUNGER GUIDE		
23	1	18100-007B	O-RING	X	X
24	1	11442	SPRING PLATE		
25	1	11605-2	SPRING, COMPRESSION		
26	1	11604	SPRING, COMPRESSION		
27	1	11448	SPRING PLATE		
28	1	18800-001	BALL, 1/2", 440C		
29	1	11606	ADAPTER		
30	1	22149	ADJUSTMENT HEAD ASSY		
31	1	33071	VALVE ACTUATOR ASSY		
32	1	12225	NAME TAG		
33	2	21082-002	SCREW, DRIVE		
34	A/R	25822	ANTI SEIZE		
35	1	25822-1	ANTI SEIZE	X	X

	FITTING	WORKING PRESSURE
INLET	1/2" NPT	5,000 PSI
REGULATED	1/2" NPT	100-1,000 PSI
VENT	1/2" NPT	AMBIENT

WEIGHT = 32 LBS

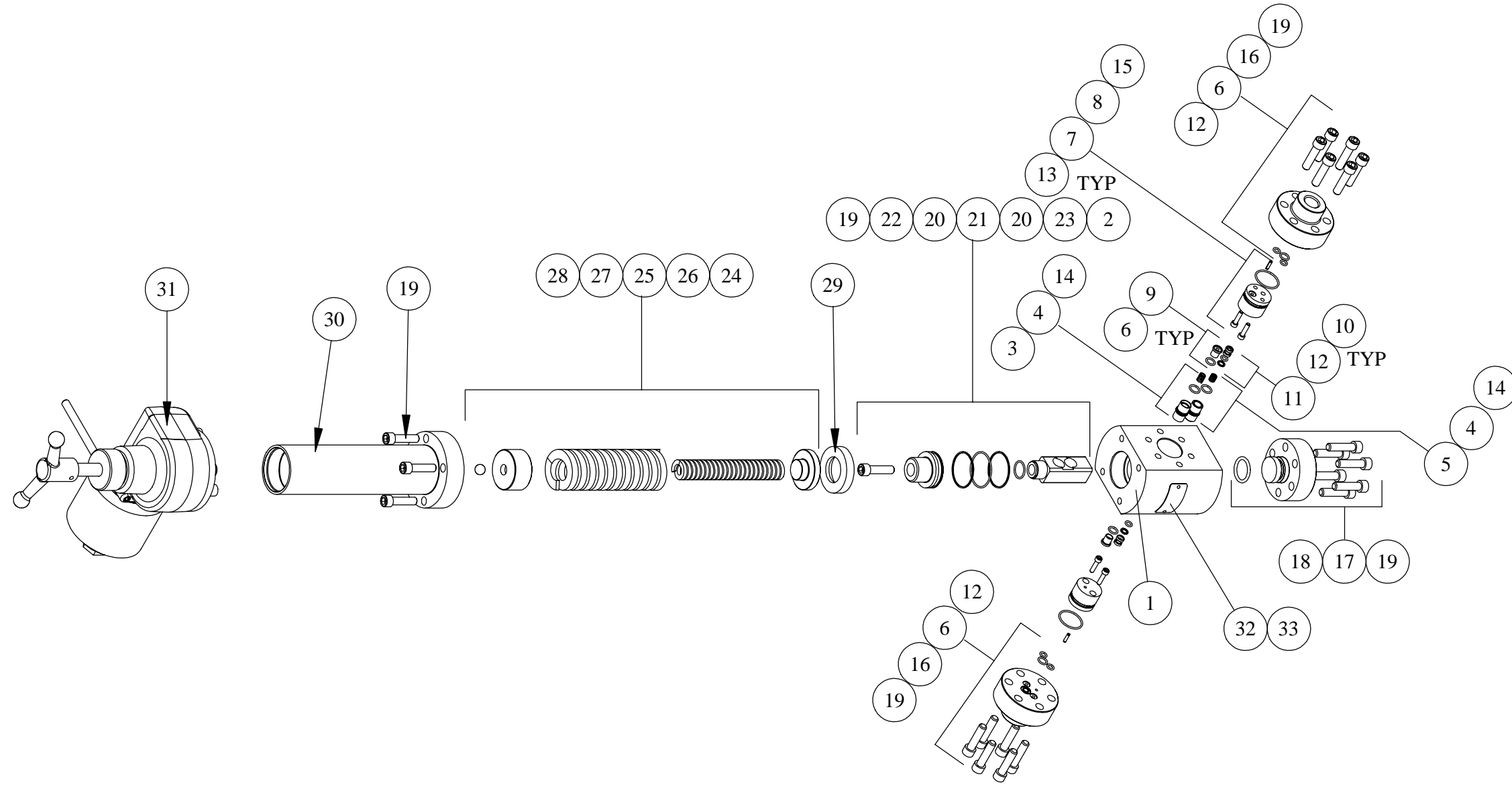


**SCHEMATIC**

NOTES: 1. X DEPICTS PARTS IN REPAIR KIT 44369-94 RK AND SEAL KIT 44369-94 SK

MATERIAL <b>REFER TO INDIV BOM ITEMS</b>	TOLERANCES: DECIMALS FRACTIONS ANGLES X ± .1 ± 1/32 ± 1° XX ± .01 XXX ± .005 DEBURR BREAK SHARP EDGES .010 INTERNAL RADIUS .015 FINISH 63/	DRWN BY <b>OD</b>	DATE <b>5/14/87</b>	<b>GILMORE VALVE CO.</b> 1231 LUMPKIN RD. HOUSTON, TX. 77043
TREATMENT <b>NA</b>	CONDITION <b>NA</b>	CHKD BY	DATE	
PROC. NO.		APPD BY	DATE	
		ERN NO.	DATE	
THE INFORMATION CONTAINED IN THIS DRAWING IS THE SOLE PROPERTY OF GILMORE VALVE CO. UNLESS OTHERWISE STATED, ANY REPRODUCTION IN PART OR WHOLE WITHOUT THE WRITTEN PERMISSION OF GILMORE VALVE CO. IS PROHIBITED.				DIMENSIONS ARE IN INCHES DO NOT SCALE DRAWING INTERPRET DIM. & TOL. PER ASME Y14.5M - 1994
		SIZE <b>C</b>	DWG NO. <b>44369-94</b>	REV <b>U</b>
SCALE <b>9:16</b>		SOLIDWORKS		SHEET 1 OF 2

REV	ECN/ERN NO.	DRWN	CHKD	APPD
U	ECN 2650	WRC 6/6/03	DSN 6/10/03	TBT 6/10/03



NOTES: 1. THIS EXPLODED ISOMETRIC VIEW ON SHEET 2 OF THE DRAWING IS A GRAPHICAL REPRESENTATION TO ASSIST IN INITIAL ASSEMBLY OR RE-WORK DISASSEMBLY & RE-ASSEMBLY. FINAL INSPECTION AND TEST SHOULD ALWAYS REFER TO SHEET 1 OF THIS DRAWING.

MATERIAL <b>REFER TO INDIV BOM ITEMS</b>		UNLESS OTHERWISE SPECIFIED TOLERANCES: DECIMALS    FRACTIONS    ANGLES .X ± .1       ± 1/32       ± 1° .XX ± .01 .XXX ± .005		DRWN BY <b>OD</b>	DATE 5/14/87	<b>GILMORE VALVE COMPANY</b> 1231 LUMPKIN RD. HOUSTON, TX. 77043		
TREATMENT <b>NA</b>	CONDITION <b>NA</b>	DEBURR BREAK SHARP EDGES .010 FINISH 63/		CHKD BY	DATE			
PROC. NO.		DIMENSIONS ARE IN INCHES DO NOT SCALE DRAWING INTERPRET DIM. & TOL. PER ASME Y14.5M - 1994		APPD BY	DATE	SIZE <b>B</b>	DWG NO. <b>44369-94</b>	REV <b>U</b>
				ERN NO.	DATE	SCALE <b>NTS</b>	<b>SOLIDWORKS</b>	SHEET 2 OF 2