

	FITTING	WORKING PRESSURE
INLET	1/2" NPT	5,000 PSI
REGULATED	1/2" NPT	100-1000 PSI
VENT	1/2" NPT	
GAGE PORT	-	-

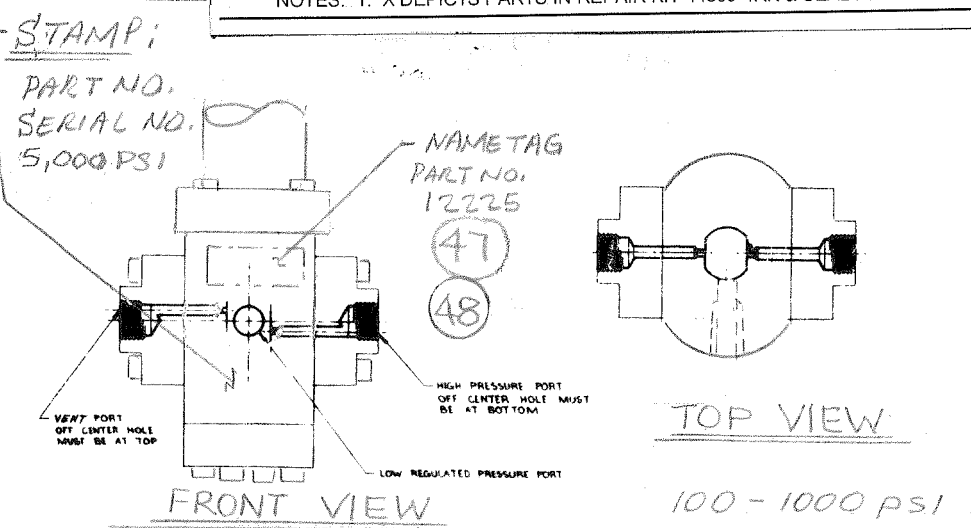
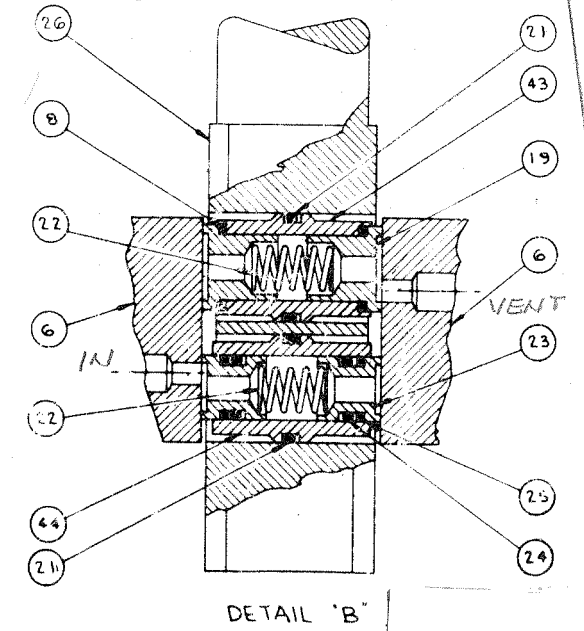
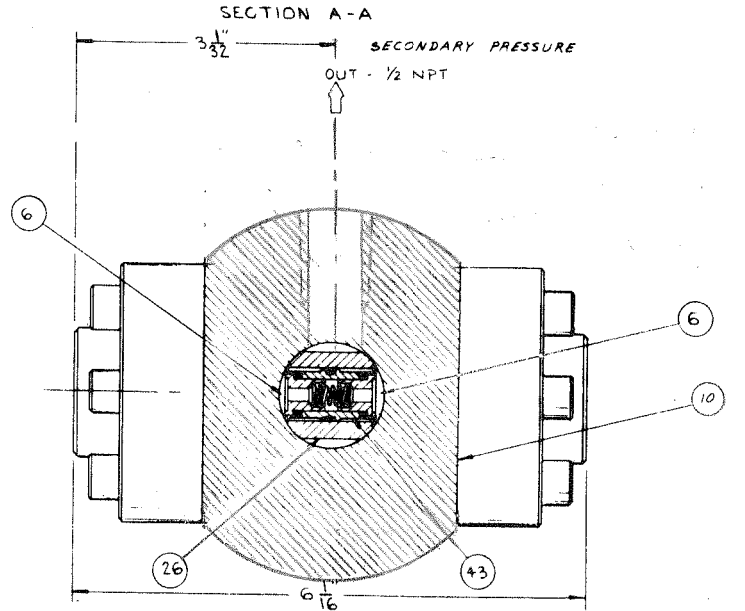
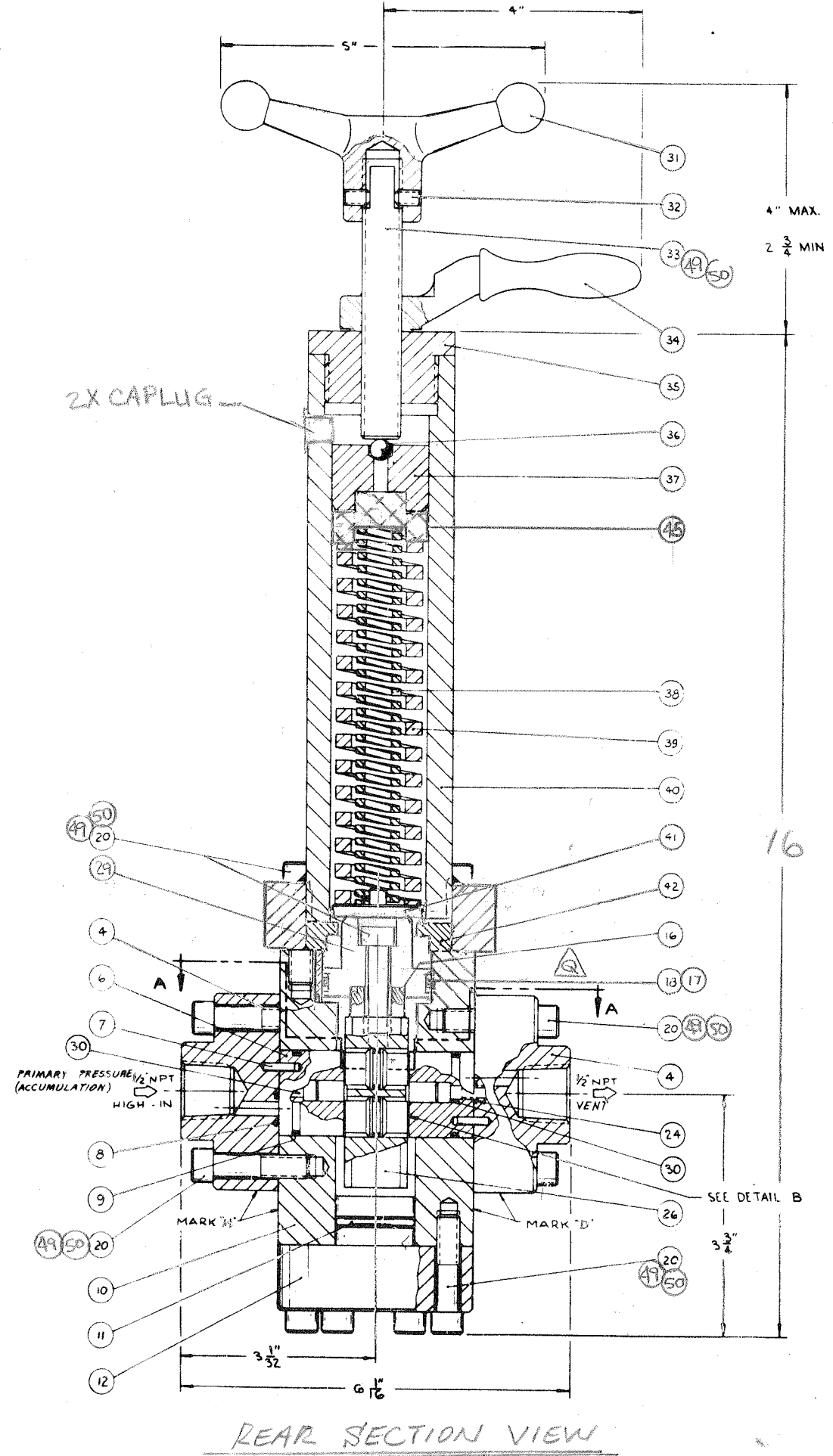
MATERIALS:

STAINLESS
CARBON STEEL
BRASS
BUNA-N
TEFLON

WEIGHT: 32 LBS.

ITEM	PART NAME	PART NO.	REQ.	RK	SK
4	FLOW PLATE FLANGE	11596	2		
6	FLOW SEAL PLATE	11594	2	X	
7	SPRING PIN 1/8 X 1/2 LG	18510-006	2		
8	O-RING	18100-004B	4	X	X
9	O-RING	18100-012B	2	X	X
10	VALVE BODY	23335	1		
11	O-RING	18100-107B	1	X	X
12	BOTTOM FLANGE	11598	1		
16	O-RING	18100-007B	1	X	X
17	BACKUP RING	18110-024T	2	X	X
18	O-RING	18100-040B	1	X	X
19	HYDRO SEAL	11592	2	X	
20	SHCS, 3/8-16 X 1-1/2	18220-002A	23		
21	O-RING	18100-013W	2	X	X
22	COMPRESSION SPRING	11600	2	X	
23	HYDRO SEAL	11593	2	X	
24	O-RING	18100-008B	6	X	X
25	BACKUP RING	18110-006T	2	X	X
26	SEAL CONTAINER	12517	1	X	
29	PISTON	12516	1		
30	SHCS, 10-24 X 3/4	18221-004G	4	X	X
31	BALL HANDLE	22150	1		
32	SET SCREW	18240-003	2		
33	ADJUSTING SCREW	11052	1		
34	LOCK HANDLE	11223	1		
35	SEALING PLUG	11446	1		
36	STEEL BALL 1/2"	18800-001	1		
37	SPRING GUIDE	11448	1		
38	COMPRESSION SPRING	11604	1		
39	COMPRESSION SPRING	11605-2	1		
40	ADJUSTMENT HEAD	22149	1		
41	SPRING PLATE	11442	1		
42	ADAPTER	11606	1		
43	OUTLET SEAL CAGE	11662	1	X	
44	INLET SEAL CAGE	11661	1	X	
45	SPACER	12734	1		
47	NAME TAG	12225	1		
48	SCREWS, DRIVE	21082-002	2		
49	ANTI-SEIZE	25822	A/R		
50	ANTI-SEIZE	25822-1	2	X	X

NOTES: 1. X DEPICTS PARTS IN REPAIR KIT 44369-4RK & SEAL KIT 44369-4SK



RECN 203 5/14/03	DATE	5/13/03	5/13/03	5/13/03	5/13/03
RECN 2112	DATE	5/13/03	5/13/03	5/13/03	5/13/03
RECN 1569	DATE	5/13/03	5/13/03	5/13/03	5/13/03
NO	REVISIONS	DATE	BY	CHK	DATE

OILMORE VALVE COMPANY
Housatonic, NY

DRAWN BY: [Signature] 5/13/03
DATE: 5/13/03

1/2" MANUAL
HYD. PRESSURE REG.

DRAWING NO. 44369-4