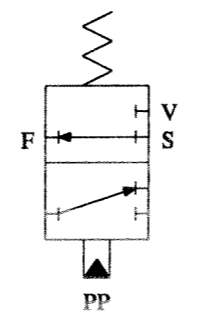


POCKET DETAIL



**SCHEMATIC
3-WAY, N.O.**

MATERIAL:
 INCONEL 718
 INCONEL X-750
 316 SS
 17-4PH
 PEEK
 95d VITON
 90d VITON

MAXIMUM WORKING PRESSURE:
 SUPPLY -----5,000 PSI
 PILOT -----5,000 PSI
 VENT -----5,000 PSI
 FLOW CAPACITY C_v = 1.1

PILOT PRESSURE 1,800 PSI AT 3,000 PSI SUPPLY
 MAXIMUM WORKING TEMP: 375°F U.S. PATENT 5,901,749

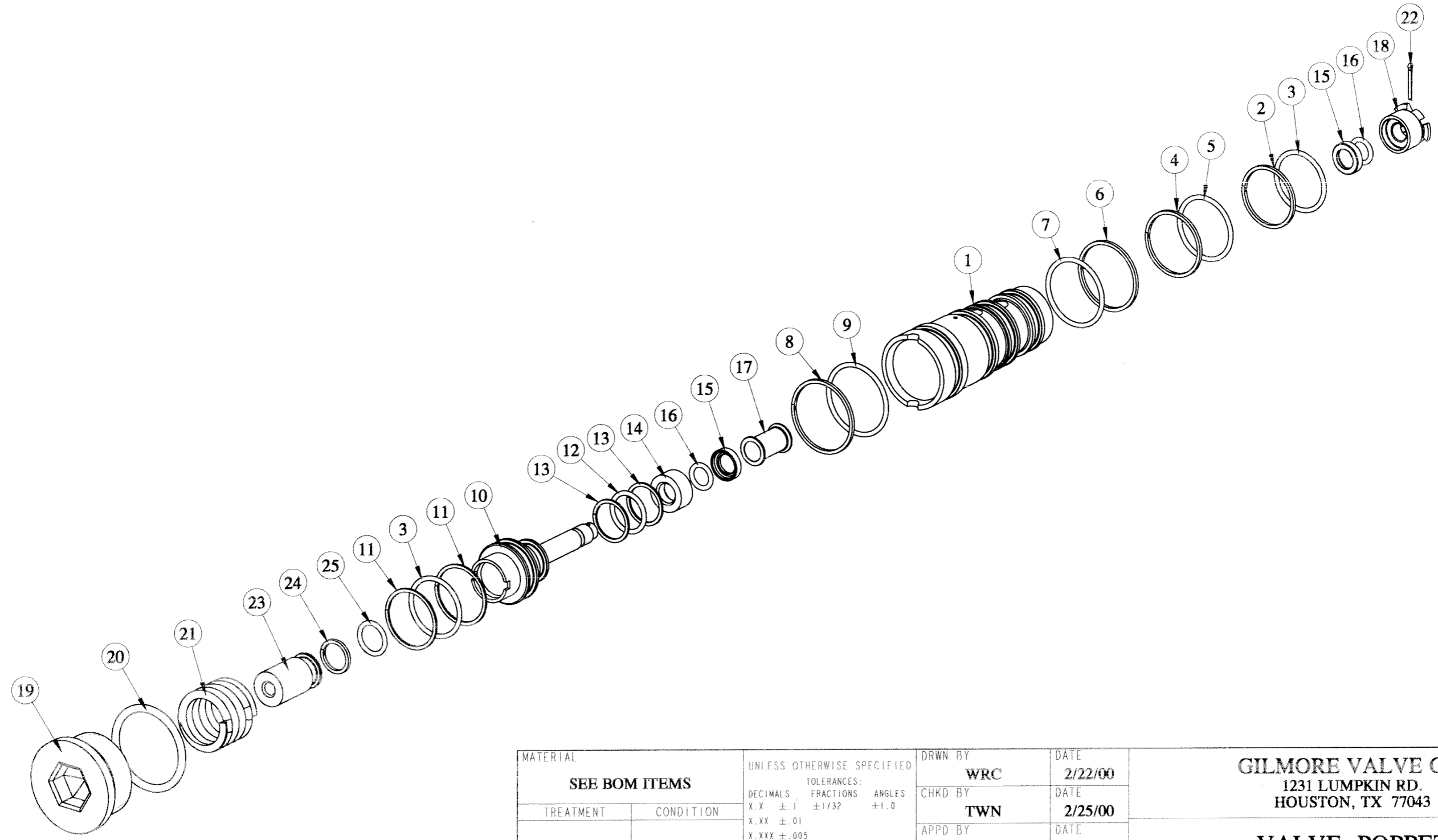
REV	ECN/ERN NO.	DRWN	CHKD	APPD
G	ECN 3069	WRC 5/19/06	<i>[Signature]</i>	<i>[Signature]</i>

ITEM NO	QTY	PART NO	DESCRIPTION	SK
1	1	23849	CAGE, 3 WAY, N.O.	
2	1	18110-002P	BACKUP RING	X
3	2	18100-003M	O-RING	X
4	1	18110-025P	BACKUP RING	X
5	1	18100-611M	O-RING	X
6	1	18110-022P	BACKUP RING	X
7	1	18100-029M	O-RING	X
8	1	18110-030P	BACKUP RING	X
9	1	18100-015M	O-RING	X
10	1	13623	PISTON	
11	2	13674	BACKUP RING	X
12	1	18100-022M	O-RING	X
13	2	13673	BACKUP RING	X
14	1	13023	GLAND	
15	2	13015	SEAL	X
16	2	18100-005M	O-RING	X
17	1	12913	SPACER	
18	1	12912	GLAND NUT	
19	1	18603-016	HEX PLUG, 1 SAE	
20	1	18100-215V	O-RING	X
21	1	12917	SPRING	
22	1	18503-018	COTTER PIN	X
23	1	13624	PLUNGER	
24	1	18110-010P	BACKUP RING	X
25	1	18100-013M	O-RING	X

NOTES: 1. ASSY TOOL PART NO. 11359.
 2. TORQUE GLAND NUT TO TAKE UP SLACK, THEN BACK UP TO FIRST COTTER PIN SLOT.
 3. X, IN THE BOM SK COLUMN, DEPICTS PARTS IN SEAL KIT 25575-1 SK.

MATERIAL SEE BOM ITEMS	UNLESS OTHERWISE SPECIFIED TOLERANCES: DECIMALS FRACTIONS ANGLES X.X ±.1 ±1/32 ±1.0 X.XX ±.01 X.XXX ±.005	DRWN BY WRC	DATE 2/22/00	GILMORE VALVE CO. 1231 LUMPKIN RD. HOUSTON, TX 77043 VALVE, POPPET 3 WAY, N.O., 375°F
TREATMENT	CONDITION	CHKD BY TWN	DATE 2/25/00	
PROC. NO.	DEBURR BREAK SHARP EDGES .010 INTERNAL RADIUS .015 FINISH 63	APPD BY RCH	DATE 2/25/00	
THE INFORMATION CONTAINED IN THIS DRAWING IS THE SOLE PROPERTY OF GILMORE VALVE CO. UNLESS OTHERWISE STATED, ANY REPRODUCTION IN PART OR WHOLE WITHOUT THE WRITTEN PERMISSION OF GILMORE VALVE CO. IS PROHIBITED.		ERN NO.	DATE	
DIMENSIONS ARE IN INCHES DO NOT SCALE DRAWING INTERPRET DIM. & TOL. PER ASME Y14.5M - 1994				SIZE B
		SCALE 2:1		DWG NO. 25575-1
		PRO/ENGINEER		REV G
		SHEET 1 OF 2		

REV	ECN/ERN NO.	DRWN	CHKD	APPD
G	ECN 3069	WRC 5/19/06	5/22/06	5/22/06



MATERIAL SEE BOM ITEMS		UNLESS OTHERWISE SPECIFIED TOLERANCES: DECIMALS FRACTIONS ANGLES X.X ±.1 ±1/32 ±1.0 X.XX ±.01 X.XXX ±.005		DRWN BY WRC	DATE 2/22/00	GILMORE VALVE CO. 1231 LUMPKIN RD. HOUSTON, TX 77043 VALVE, POPPET 3 WAY, N.O., 375°F		
TREATMENT	CONDITION	DEBURR BREAK SHARP EDGES .010 INTERNAL RADIUS .015 FINISH 63		CHKD BY TWN	DATE 2/25/00			
PROC. NO.		DIMENSIONS ARE IN INCHES DO NOT SCALE DRAWING INTERPRET DIM. & TOL. PER ASME Y14.5M - 1994		APPD BY RCH	DATE 2/25/00			
THE INFORMATION CONTAINED IN THIS DRAWING IS THE SOLE PROPERTY OF GILMORE VALVE CO. UNLESS OTHERWISE STATED. ANY REPRODUCTION IN PART OR WHOLE WITHOUT THE WRITTEN PERMISSION OF GILMORE VALVE CO. IS PROHIBITED.				ERN NO.	DATE	SIZE B	DWG NO. 25575-1	REV G
				SCALE 3:5		PRO/ENGINEER		SHEET 2 OF 2