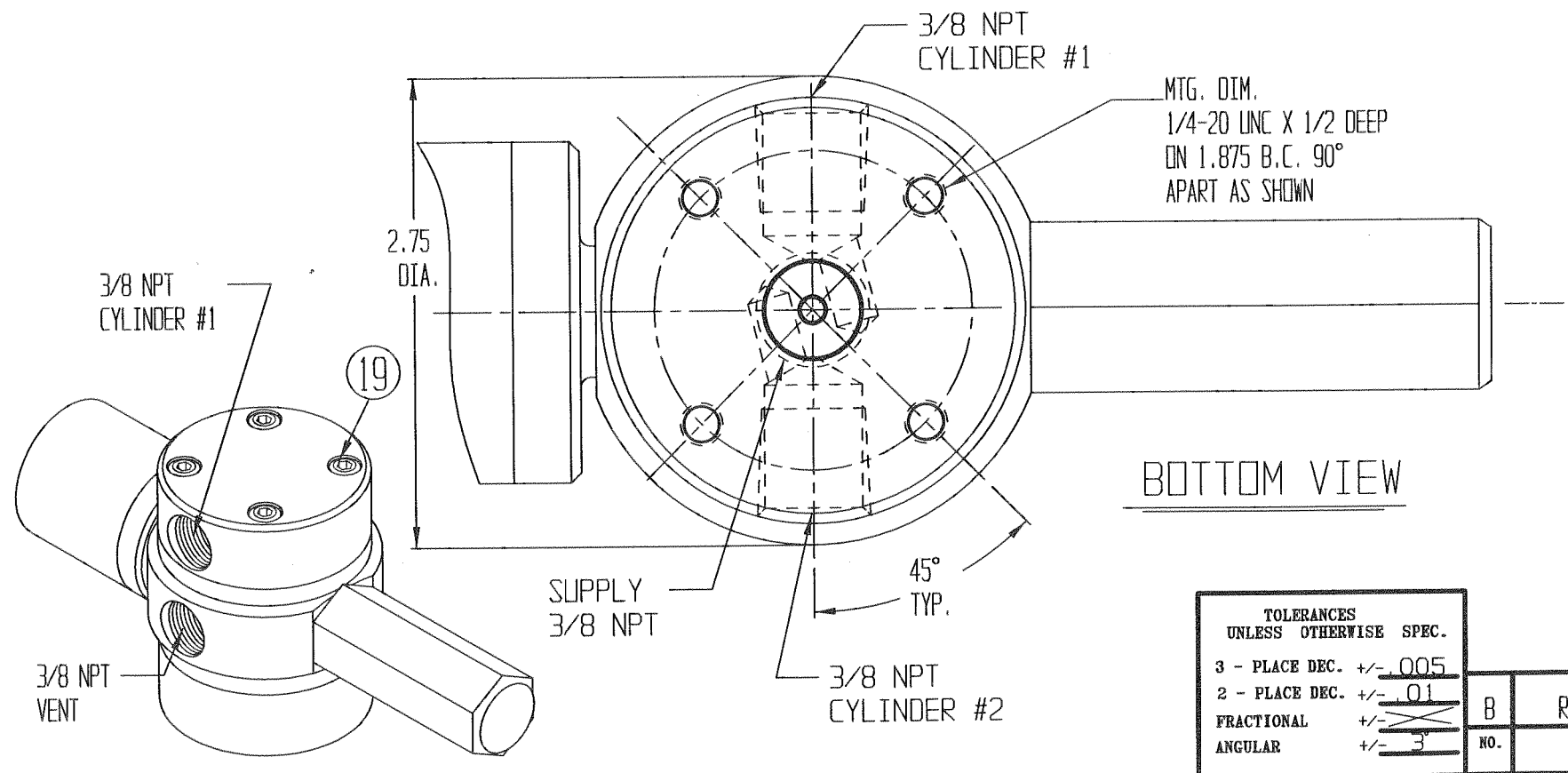


MATERIAL LIST

ITEM	PART NO.	DESCRIPTION	REQ'D.
o 1	23145	SEAL PLATE, SUPPLY	1
o 2	23146	SEAL PLATE, CYLINDER	1
o 3	23147	PRESSURE SEAL	1
o 4	23148	CYLINDER SEAL	1
5	23149	SEAL CONTAINER	1
6	23195	SUPPLY COVER	1
7	23194	BODY	1
8	23196	CYLINDER COVER	1
9	23257	PILOT ROD	1
10	23191	PILOT PISTON	1
11	23189	CYLINDER	1
12	23190	CYLINDER CAP	1
o 13	18100-011B	O-RING 5/16 x 3/16 x 1/16	1
14	23198	SPRING HOUSING ASS'Y	1
o 15	18100-008C	O-RING 3/8 x 1/4 x 1/16	3
o 16	18660-002	CURVED SPRING WASHER	1
o 17	18100-013C	O-RING 9/16 x 7/16 x 1/16	2
18	18220-110S	SOC. HD. CAP SCR. 1/4-20 X 1 1/2 LG.	4
19	18220-116S	SOC. HD. CAP SCR. 1/4-20 X 2 1/2 LG.	4
o 20	18100-054B	O-RING 7/8 x 11/16 x 3/32	2
o 22	18100-015B	O-RING 1 3/16 x 1 1/16 x 1/16	2
23	12225	NAME TAG	1

o -- REPAIR KIT 25517RK

NOTE:
1. TORQUE ITEMS 12 AND 14
TO 27-29 FT-LBS.



MAXIMUM WORKING PRESSURE : SUPPLY ----- 5,000PSI
PILOT ----- 3,000PSI
VENT ----- 3,000PSI

FLOW CAPACITY $C_v = .40$
PILOT PRESSURE 410 PSI AT 3,000 PSI SUPPLY

U.S. PAT. NO. 3,917,220

MATERIAL :
316 STAINLESS STEEL
WEIGHT 5 1/2 LBS.

TOLERANCES UNLESS OTHERWISE SPEC.	
3 - PLACE DEC.	+/- .005
2 - PLACE DEC.	+/- .01
FRACTIONAL	+/- $\frac{1}{32}$
ANGULAR	+/- 3'

B	REDRAWN	9/22/93	JOSE' RLR
NO.	REVISIONS	DATE	DR. CK.

NAME OF PART 3/8 NPT PILOT HYD. CYLINDER 4 WAY SELECTOR VALVE ASS'Y	
GILMORE VALVE COMPANY HOUSTON, TEXAS	
DATE - 8-24-84	REFERENCE
SCALE - FULL	
DR. BY - jose'	DRAWING NO.
C'K'D BY - RLR	25517
APP'D BY -	