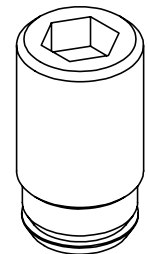
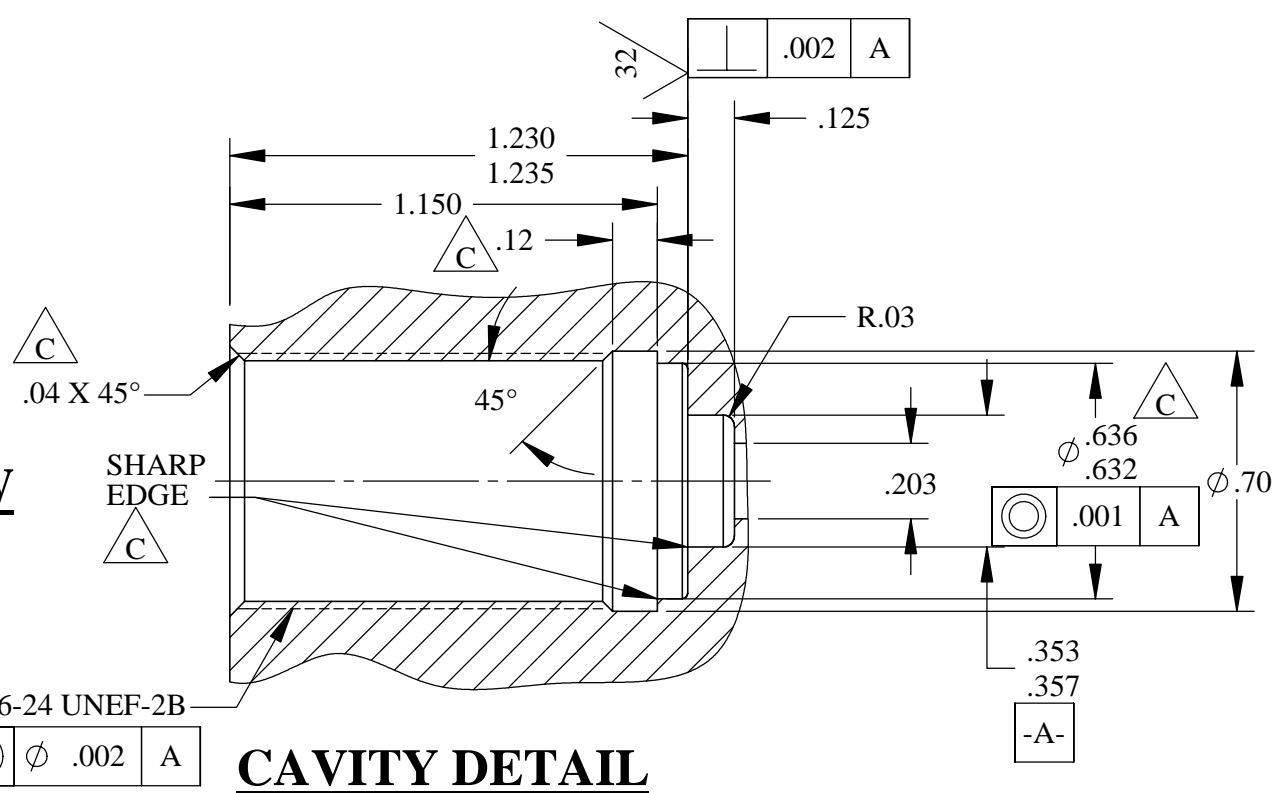


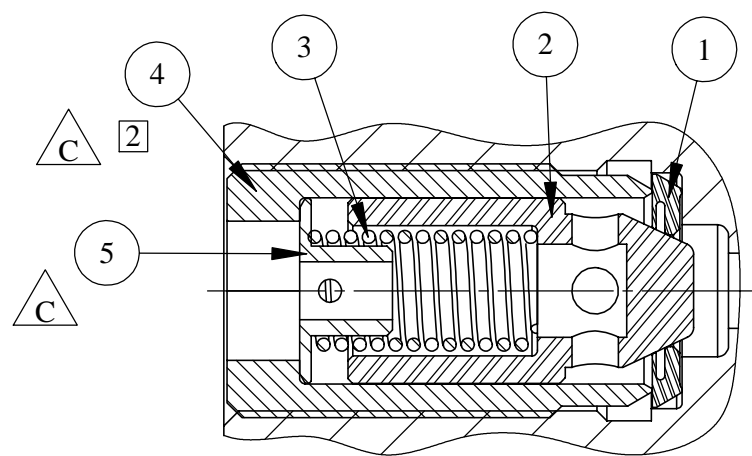
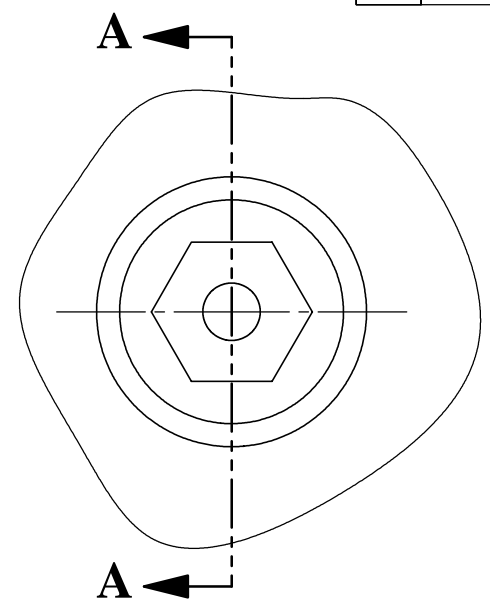
| | | | | |
|-----|-------------|--------------|-------------|-------------|
| REV | ECN/ERN NO. | DRWN | CHKD | APPD |
| C | ECN 2712 | WRC 10/22/03 | DJW 11/3/03 | TBT 11/4/03 |



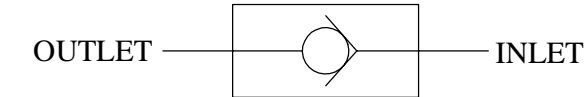
ISOMETRIC VIEW



CAVITY DETAIL



SECTION A-A



SCHEMATIC

| ITEM NO. | QTY. | PART NO. | DESCRIPTION | RK |
|----------|------|----------|-----------------------------------|----|
| 1 | 1 | 27459 | SEAL RING | 4 |
| 2 | 1 | 27457 | POPPET, POPPET CHECK VALVE | |
| 3 | 1 | 27458 | SPRING, COMPRESSION | |
| 4 | 1 | 27456 | RETAINER BODY, POPPET CHECK VALVE | |
| 5 | 1 | 27597 | SPRING GUIDE | |

PRESSURES:
 TEST PRESSURE - 22,500 PSI
 WORKING PRESSURE - 15,000 PSI
 CRACKING PRESSURE - 70 PSI NOMINAL

FLOW (WATER BASED):
 Cv (CALCULATED) - .48

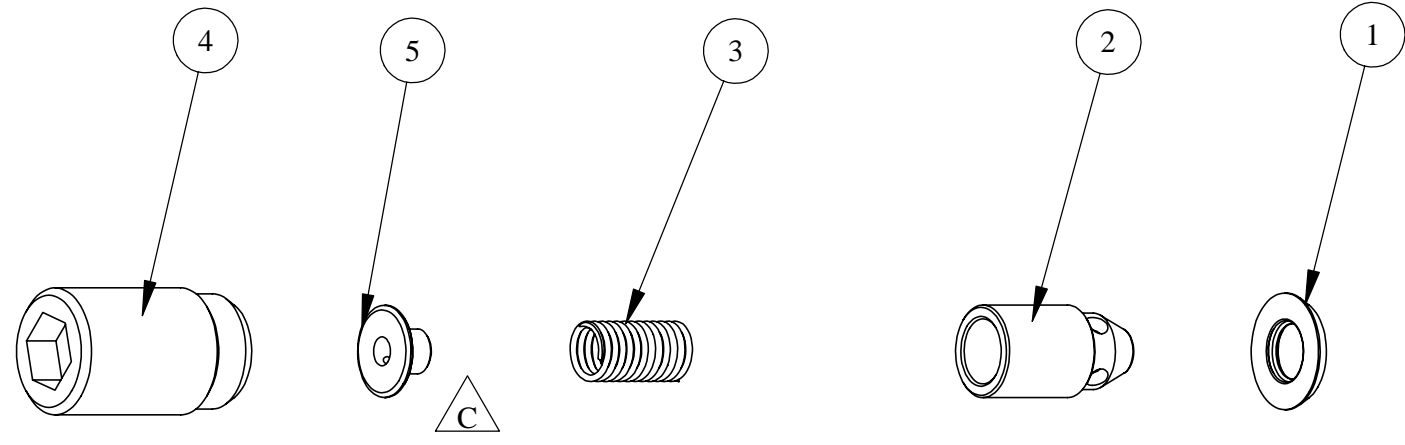
GENERAL DATA:
 WEIGHT - 1.0 LB
 NACE MR-01-75
 API-PR2 CODE COMPATIBLE

MATERIAL:
 INCONEL 718
 ELGILOY
 TUNGSTEN CARBIDE
 INCONEL 625

5. OPTIONAL VALVE BLOCK 25056.
- 4 CONSULT GVC ENGINEERING FOR FURTHER DETAILS FOR (RK) REPAIR KIT. REFER TO GVCP-0394-M.
3. TORQUE RETAINER BODY AT ASSEMBLY TO 50±5 FT-LBS
- 2 PRIOR TO ASSEMBLY, APPLY LOCTITE PRIMER, N 7649, TO RETAINER BODY THREADS AND LET CURE FOR 5 MINUTES. THEN APPLY LOCTITE PIPE SEALANT, 567, TO ALL RETAINER BODY THREADS AND ASSEMBLE PER ASSEMBLY PROCEDURE.
- NOTES: 1. FOR ASSEMBLY PROCEDURE, REFER TO GVCP-0394-A.

| | | | | | | | | |
|---|-----------|--|------------|------------------|-----------------|---|--|--------------|
| MATERIAL REFER TO INDIV BOM ITEMS | | UNLESS OTHERWISE SPECIFIED TOLERANCES: DECIMALS FRACTIONS ANGLES .X ±.1 ±1/32 ±1° | | DRWN BY WRC | DATE 10/7/02 | GILMORE VALVE CO. 1231 LUMPKIN RD. HOUSTON, TX. 77043 | | |
| TREATMENT | CONDITION | .XX ±.01 | .XXX ±.005 | CHKD BY DJW | DATE 10/9/02 | | | |
| PROC. NO. | | DEBURR BREAK SHARP EDGES .010 INTERNAL RADIUS .015 FINISH 63 | | APPD BY TBT | DATE 10/9/02 | VALVE, CHECK, 1/4" POPPET 3/8" HEX DRIVE, SUBPLATE MOUNTED | | |
| THE INFORMATION CONTAINED IN THIS DRAWING IS THE SOLE PROPERTY OF GILMORE VALVE CO. UNLESS OTHERWISE STATED. ANY REPRODUCTION IN PART OR WHOLE WITHOUT THE WRITTEN PERMISSION OF GILMORE VALVE CO. IS PROHIBITED. | | DIMENSIONS ARE IN INCHES DO NOT SCALE DRAWING INTERPRET DIM. & TOL. PER ASME Y14.5M - 1994 | | ERN NO. 00692 | DATE 10/7/02 | | | |
| | | | | SCALE NTS | | SOLIDWORKS | | SHEET 1 OF 2 |

| | | | | |
|-----|-------------|--------------|-------------|-------------|
| REV | ECN/ERN NO. | DRWN | CHKD | APPD |
| C | ECN 2712 | WRC 10/22/03 | DJW 11/3/03 | TBT 11/4/03 |



| | |
|---|-----------|
| MATERIAL REFER TO INDIV BOM ITEMS | |
| TREATMENT | CONDITION |
| | |
| PROC. NO. | |
| THE INFORMATION CONTAINED IN THIS DRAWING IS THE SOLE PROPERTY OF GILMORE VALVE CO. UNLESS OTHERWISE STATED, ANY REPRODUCTION IN PART OR WHOLE WITHOUT THE WRITTEN PERMISSION OF GILMORE VALVE CO. IS PROHIBITED. | |

| | | |
|--|-----------|--------|
| UNLESS OTHERWISE SPECIFIED TOLERANCES: | | |
| DECIMALS | FRACTIONS | ANGLES |
| .X ± .1 | ± 1/32 | ± 1° |
| .XX ± .01 | | |
| .XXX ± .005 | | |
| DEBURR BREAK SHARP EDGES .010 INTERNAL RADIUS .015 FINISH 63 | | |
| DIMENSIONS ARE IN INCHES DO NOT SCALE DRAWING INTERPRET DIM. & TOL. PER ASME Y14.5M - 1994 | | |

| | |
|-------------------------|------------------------|
| DRWN BY WRC | DATE 10/7/02 |
| CHKD BY DJW | DATE 10/9/02 |
| APPD BY TBT | DATE 10/9/02 |
| ERN NO. 00692 | DATE 10/7/02 |
| | |

| | | | |
|--|-------------------------|----------------------------|--|
| GILMORE VALVE CO. 1231 LUMPKIN RD. HOUSTON, TX. 77043 | | | |
| VALVE, CHECK, 1/4" POPPET 3/8" HEX DRIVE, SUBPLATE MOUNTED | | | |
| SIZE B | DWG NO. 27455 | REV C | |
| SCALE NTS | SOLIDWORKS | SHEET 2 OF 2 | |