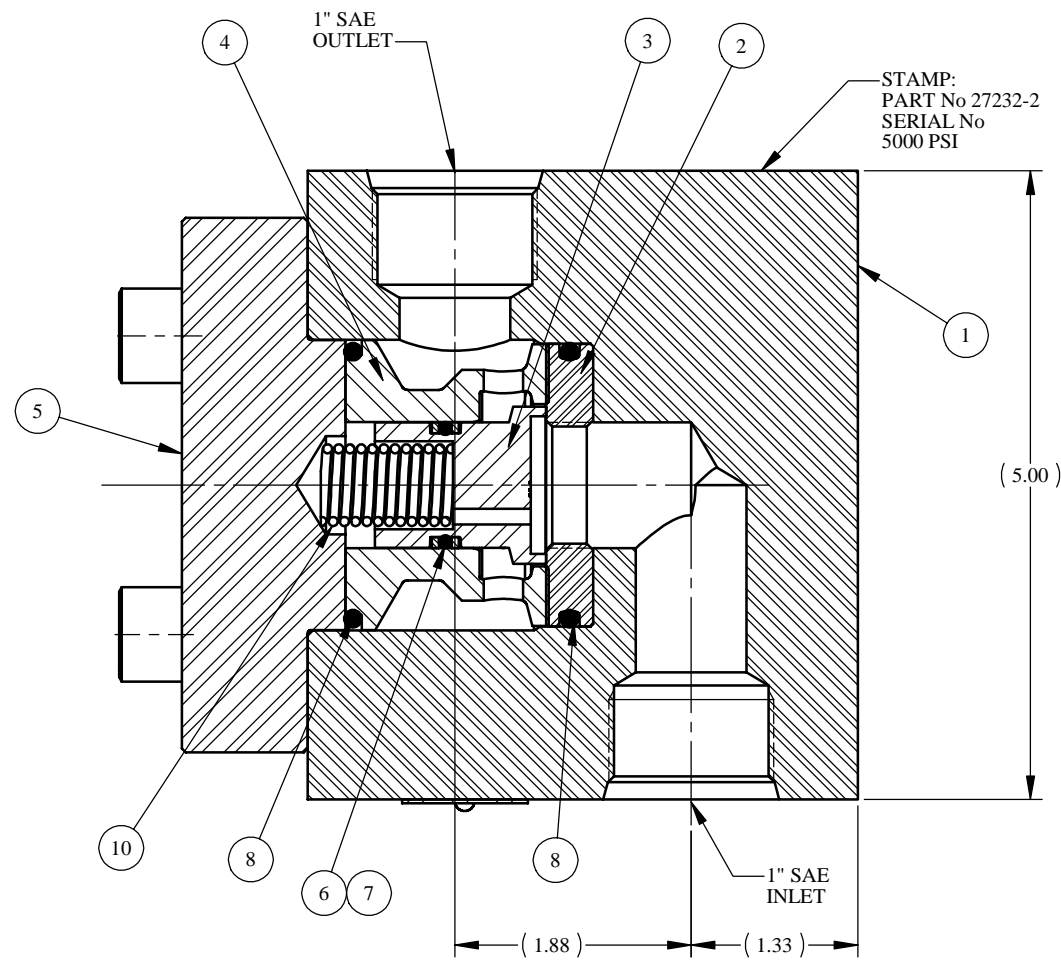
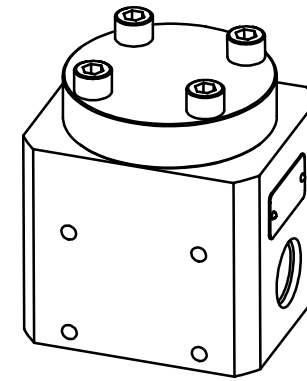
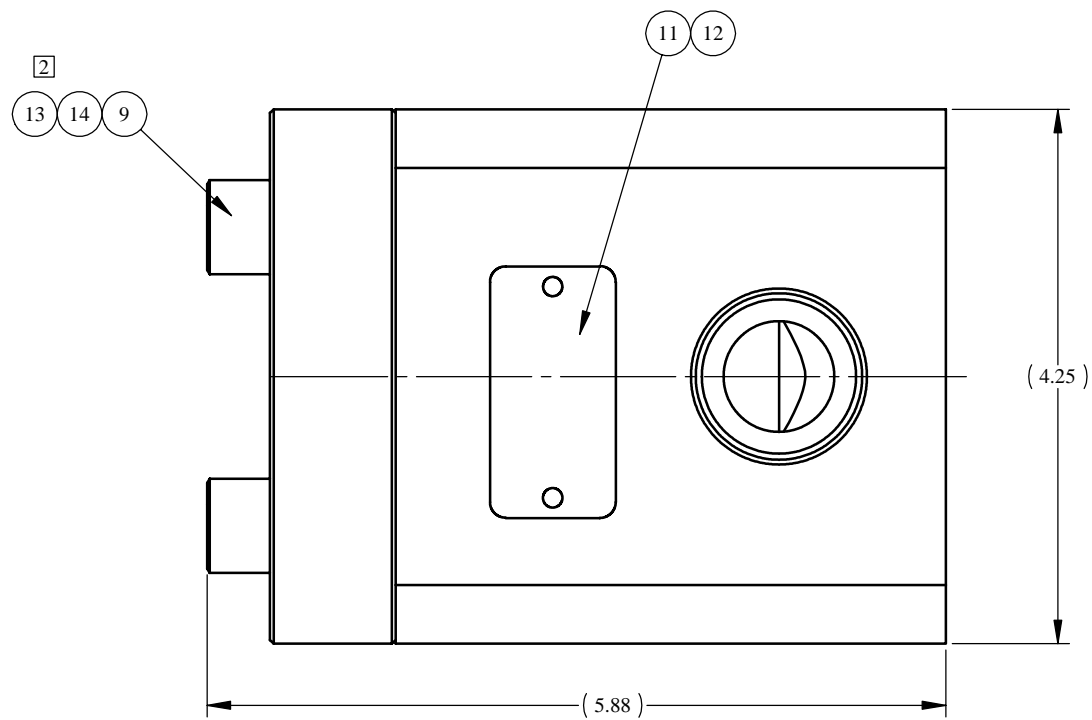


REV	ECN/ERN NO.	DRWN	CHKD	APPD
B	ECN 2350	DDG 3/12/02	DJW 3/14/02	TBT 3/15/02



SECTION A-A



ITEM NO.	QTY.	PART NO.	DESCRIPTION	RK	SK
1	1	27206-2	BODY, 1" SAE		
2	1	27145	SEAL	X	X
3	1	22909	SEAL SLEEVE	X	
4	1	27144	CAGE		
5	1	27161	1" FLANGE		
6	1	18100-074B	O-RING	X	X
7	2	18110-115T	BACKUP RING	X	X
8	2	18100-102C	O-RING	X	X
9	4	18224-017	S.H.C.S., 1/2-13 UNC X 2		
10	1	13020	COMPRESSION SPRING		
11	1	12225	NAME TAG		
12	2	21082-002	SCREW, DRIVE		
13	A/R	25822	ANTI SEIZE		
14	1	25822-1	ANTI SEIZE	X	X

PRESSURE DATA

MAXIMUM PRESSURE - 5,000 PSI
 PROOF PRESSURE - 7,500 PSI
 CRACKING PRESSURE - 110 PSI

FLOW DATA

MAXIMUM FLOW CAPACITY - 250 GPM
 Cv = 11.5
 FLUIDS - WATER, AND MINERAL OIL
 BASED HYDRAULIC FLUID

PORTS

INLET - 1" SAE
 OUTLET - 1" SAE

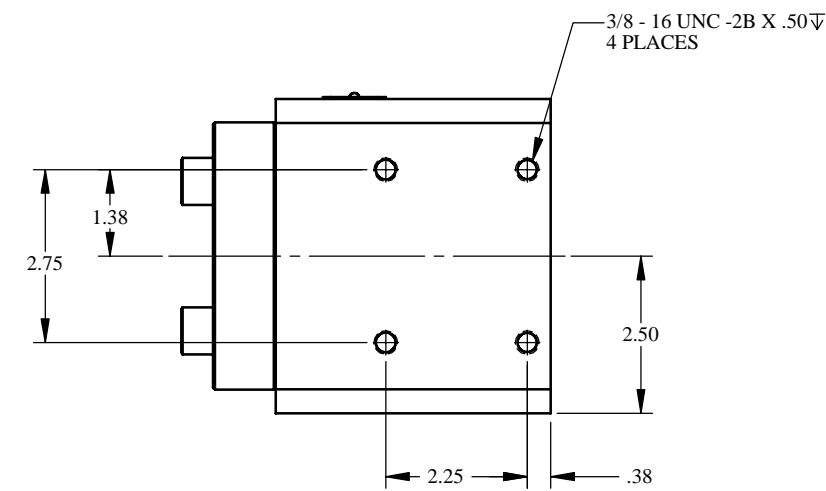
GENERAL DATA

TEMPERATURE RANGE - +32°F TO +200°F
 APPROX WEIGHT - 27 LBS
 FIELD SERVICEABLE

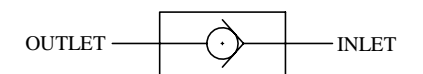
MATERIALS

AUSTENITIC STAINLESS STEEL
 PEEK
 NITRILE RUBBER
 A286

PATENT NO. 4,793,590 APPLIES



MOUNTING DETAIL



SCHEMATIC

NOTES: [2] TORQUE MAIN FLANGE BOLTS (ITEM 9) TO 80 FT-LBS.
 1. X DEPICTS PARTS IN REPAIR KIT 27232-2 RK AND SEAL KIT 27232-2 SK.

MATERIAL SEE INDIV. BOM	UNLESS OTHERWISE SPECIFIED TOLERANCES: DECIMALS FRACTIONS ANGLES X ± .1 ± 1/32 ± 1° XX ± .01 XXX ± .005 DEBURR BREAK SHARP EDGES 0.10 INTERNAL RADIUS 0.15 FINISH 63	DRWN BY JK	DATE 1/29/02	GILMORE VALVE CO. 1231 LUMPKIN RD. HOUSTON, TX. 77043 VALVE, CHECK, 1" SAE
TREATMENT	CONDITION	CHKD BY DJW	DATE 1/31/02	
PROC. NO. GVCP-0238		APPD BY TBT	DATE 1/31/02	
<small>THE INFORMATION CONTAINED IN THIS DRAWING IS THE SOLE PROPERTY OF GILMORE VALVE CO. UNLESS OTHERWISE STATED, ANY REPRODUCTION IN PART OR WHOLE WITHOUT THE WRITTEN PERMISSION OF GILMORE VALVE CO. IS PROHIBITED.</small>		ERN NO. 00567	DATE 1/28/02	
<small>DIMENSIONS ARE IN INCHES DO NOT SCALE DRAWING INTERPRET DIM. & TOL. PER ASME Y14.5M - 1994</small>				SIZE C DWG NO. 27232-2 SCALE 1:1 SHEET 1 OF 1