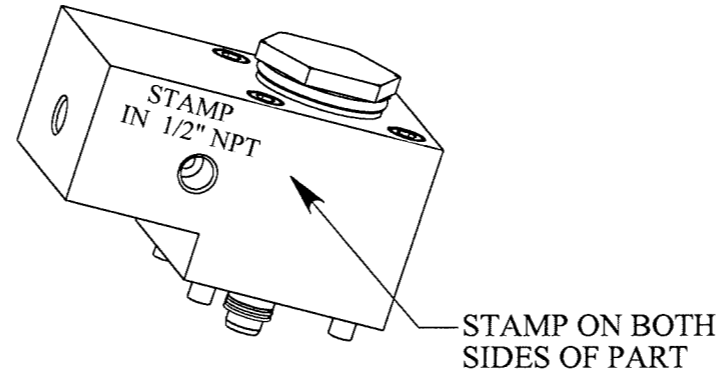


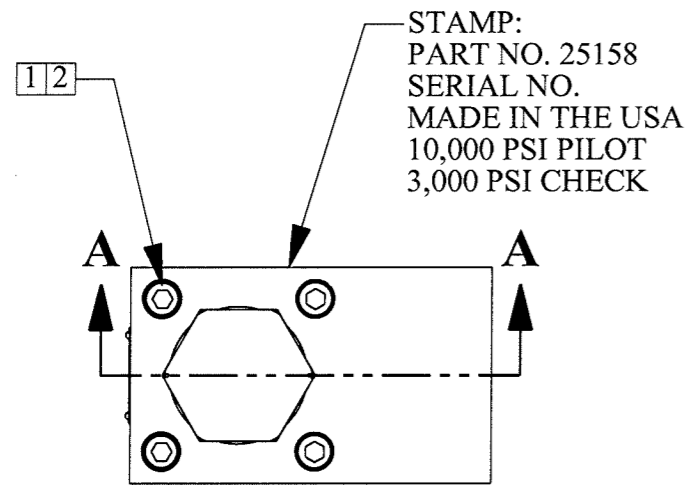
REV	ECN/ERN NO.	DRWN	CHKD	APPD
C	ECN 3154	JOSE' 9/20/07	<i>JS</i> 09/24/07	<i>JS</i> 09/24/07



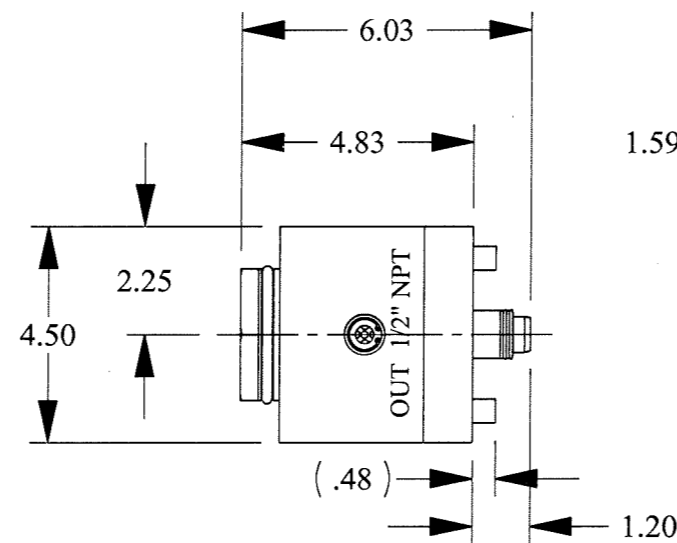
ISOMETRIC VIEW

- CRACKING PRESS. 80 PSI
- Cv = 1.6
- APPROX. WEIGHT 40 LBS.
- MAX. WELLBORE PILOT PRESS. 10,000 PSI
- MAX. CHECK VALVE PRESS. 3,000 PSI

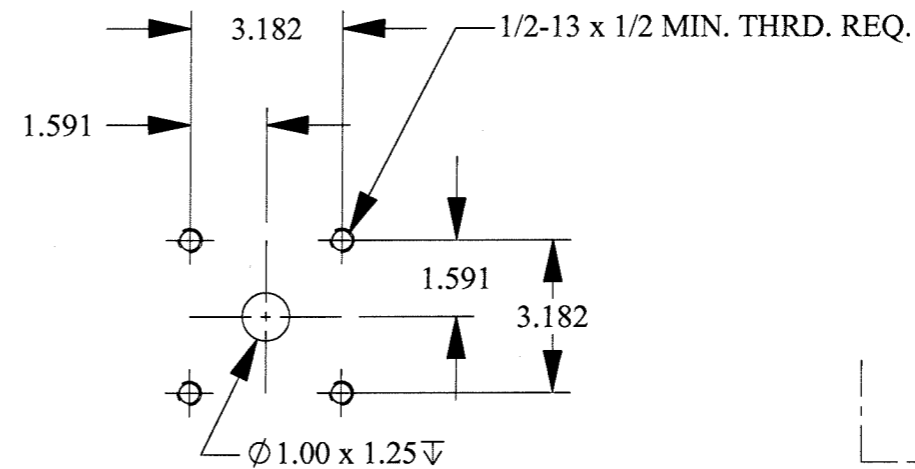
CHECK VALVE STATUS	WELLBORE PRESS. TO PILOT	CONNECTOR HYDR. PRESS. IN CHECK VALVE
OPEN	25 PSI FALLING	0 PSI
CLOSE	100 PSI RISING	0 PSI



TOP VIEW



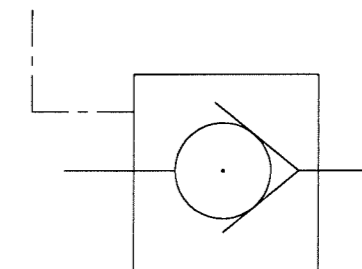
RIGHT SIDE VIEW



MOUNTING DETAIL

MATERIALS

- 300 SERIES STAINLESS STEEL
- 17-7 STAINLESS STEEL
- NITRONIC 60
- 440 C
- DELRIN
- POLYMITTE
- TEFLON
- BUNA-70D
- BUNA-90D



SCHEMATIC

MATERIAL		UNLESS OTHERWISE SPECIFIED TOLERANCES:		DRWN BY	DATE	GILMORE VALVE COMPANY 1231 LUMPKIN RD. HOUSTON, TX. 77043 WELLBORE PILOTED CHECK VALVE ASSY.					
TREATMENT		DECIMALS FRACTIONS ANGLES		CWC	5/11/99				SIZE	DWG NO.	REV
CONDITION		.X ± .1 ± 1/32 ± 1°		CHKD BY	DATE				B	25158	C
		.XX ± .01		APPD BY	DATE				SCALE NTS SOLIDWORKS SHEET 1 OF 2		
		.XXX ± .005		RCH	9/22/00						
PROC. NO.		DEBURR		ERN NO.	DATE						
GVCP 0232		BREAK SHARP EDGES .010									
THE INFORMATION CONTAINED IN THIS DRAWING IS THE SOLE PROPERTY OF GILMORE VALVE CO. UNLESS OTHERWISE STATED, ANY REPRODUCTION IN PART OR WHOLE WITHOUT THE WRITTEN PERMISSION OF GILMORE VALVE CO. IS PROHIBITED.		FINISH 63									
		DIMENSIONS ARE IN INCHES									
		DO NOT SCALE DRAWING									
		INTERPRET DIM. & TOL. PER ASME Y14.5M - 1994									

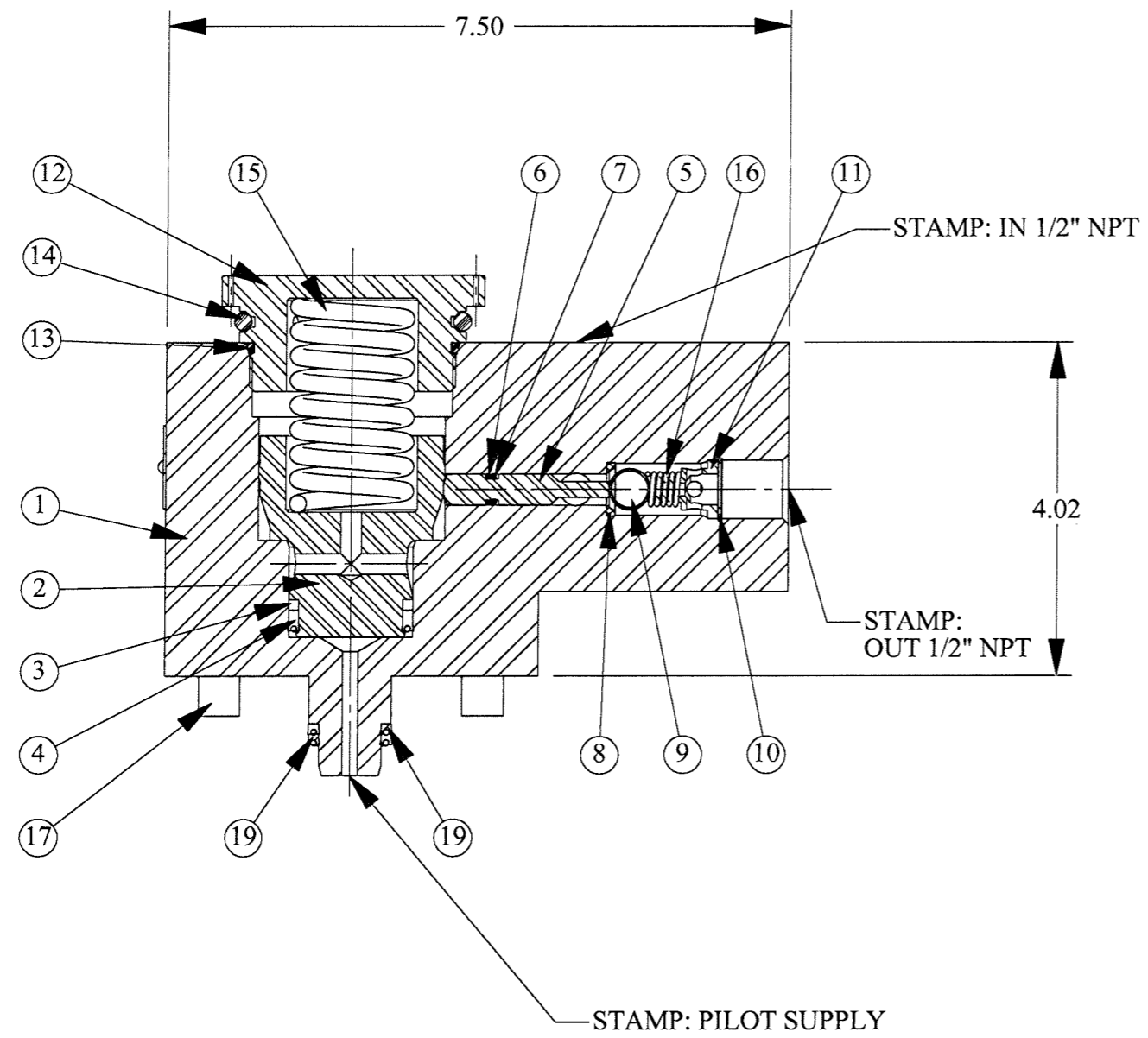
2 3/8" ALLEN KEY REQ. FOR BOLT REMOVAL.

NOTES:

1 TORQUE 45-50 FT-LBS.

REV	ECN/ERN NO.	DRWN	CHKD	APPD
C	ECN 3154	JOSE' 9/20/07	SS 09/24/07	SS 09/24/07

ITEM NO.	QTY.	PART NO.	DESCRIPTION	RK	SK
1	1	24074	BODY		
2	1	24075	WELLBORE PISTON	X	
3	1	13634	DELRIN BEARING	X	X
4	1	18119-001	POLYPAK, 12501250-250	X	X
5	1	13633	CHECK PILOT PISTON		
6	1	18110-006T	BACKUP RING	X	X
7	1	18100-008C	O-RING	X	X
8	1	12408	DELRIN SEAL	X	X
9	1	18800-001	BALL, 1/2", 440C		
10	1	18400-068	RETAINING RING	X	X
11	1	11763	SPRING GUIDE		
12	1	24076	TOP CAP		
13	1	18100-220C	O-RING	X	X
14	1	18100-332B	O-RING	X	X
15	1	13636	COMPRESSION SPRING		
16	1	11741	COMPRESSION SPRING		
17	4	18220-306S	S.H.C.S.- 1/2-13 x 4 LG.		
19	2	18119-002	POLYPAK, 12500750-250	X	X



SECTION A-A

MATERIAL SEE B.O.M. AND NOTE 1 (SHT 2)		UNLESS OTHERWISE SPECIFIED TOLERANCES:	
TREATMENT	CONDITION	DECIMALS	FRACTIONS
		.X ± .1	± 1/32
		.XX ± .01	± 1°
		.XXX ± .005	
PROC. NO. GVCP 0232		DEBURR BREAK SHARP EDGES .010	
THE INFORMATION CONTAINED IN THIS DRAWING IS THE SOLE PROPERTY OF GILMORE VALVE CO. UNLESS OTHERWISE STATED, ANY REPRODUCTION IN PART OR WHOLE WITHOUT THE WRITTEN PERMISSION OF GILMORE VALVE CO. IS PROHIBITED.		FINISH 63/	
		DIMENSIONS ARE IN INCHES DO NOT SCALE DRAWING INTERPRET DIM. & TOL. PER ASME Y14.5M - 1994	

DRWN BY CWC	DATE 5/11/99
CHKD BY TWN	DATE 5/11/99
APPD BY RCH	DATE 9/22/00
ERN NO.	DATE

GILMORE VALVE COMPANY			
1231 LUMPKIN RD. HOUSTON, TX. 77043			
WELLBORE PILOTED CHECK VALVE ASSY.			
SIZE B	DWG NO. 25158	REV C	
SCALE NTS	SOLIDWORKS	SHEET 2 OF 2	

NOTES: 1. " X " DENOTES CONTAINMENT OF EITHER A REPAIR KIT (RK) OR SEAL KIT (SK).