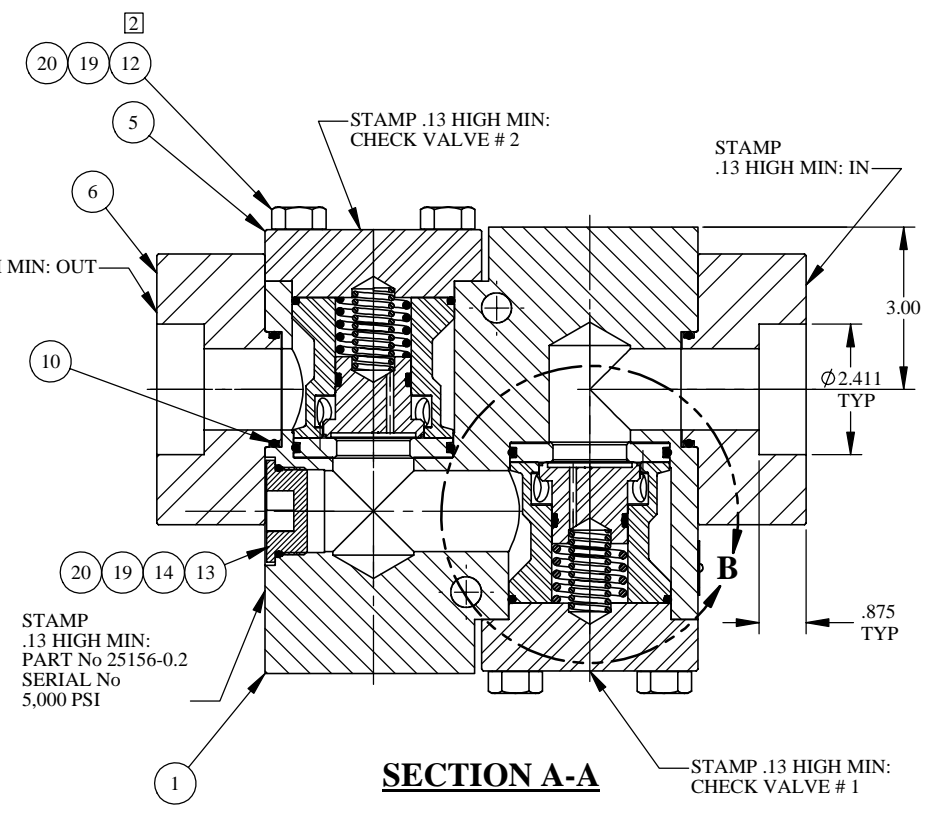
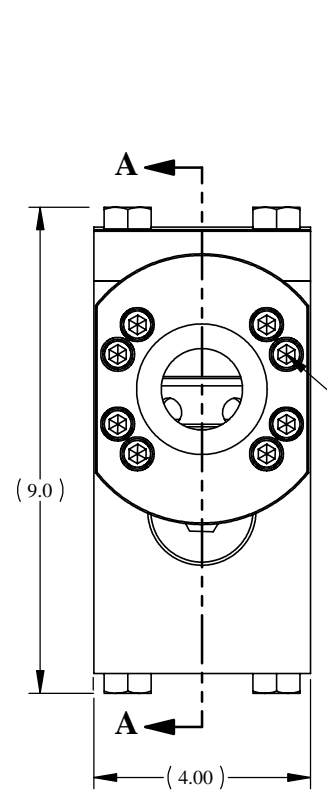
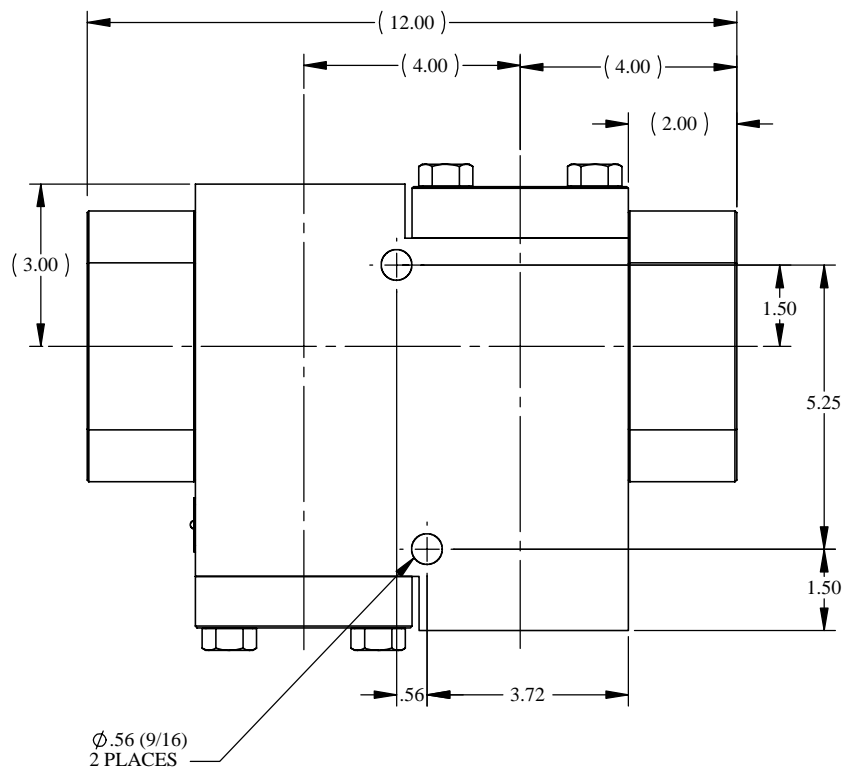


REV	ECN/ERN NO.	DRWN	CHKD	APPD
A	ERN 00857	JOSE' 1/26/04	DJW 2/9/04	TBT 2/11/04



ITEM NO.	QTY.	PART NO.	DESCRIPTION	RK	SK
1	1	24052	BODY 1" DOUBLE CHECK VALVE		
2	2	27122-1	SEAL	X	X
3	2	23093	SEAL SLEEVE	X	
4	2	27140	CAGE		
5	2	23089	2" FLANGE		
6	2	24049	2" SOCKET WELD FLANGE		
7	2	18100-078B	O-RING	X	X
8	4	18110-131T	BACKUP RING	X	X
9	4	18100-115C	O-RING	X	X
10	2	18100-117C	O-RING	X	X
11	16	18224-006	S.H.C.S., 3/8-16 UNC X 2		
12	8	21053	H.H.C.S., 5/8-18 UNF X 1-5/8		
13	1	18603-020	HEX PLUG, 1-1/4 SAE		
14	1	18100-217C	O-RING	X	X
15	2	27121	SPRING, COMPRESSION		
16	2	12000	SPRING, COMPRESSION		
17	1	12225	NAME TAG		
18	2	21082-002	SCREW, DRIVE		
19	A/R	25822	ANTI SEIZE		
20	2	25822-1	ANTI SEIZE	X	X

**PRESSURE DATA**  
 MAXIMUM PRESSURE - 5,000 PSI  
 PROOF PRESSURE - 7,500 PSI  
 CRACKING PRESSURE - 80 PSI

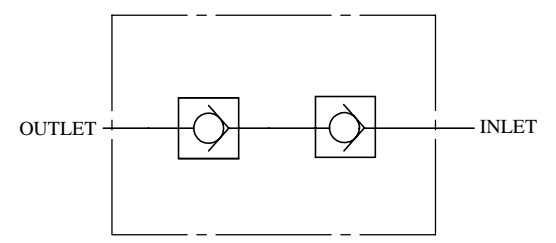
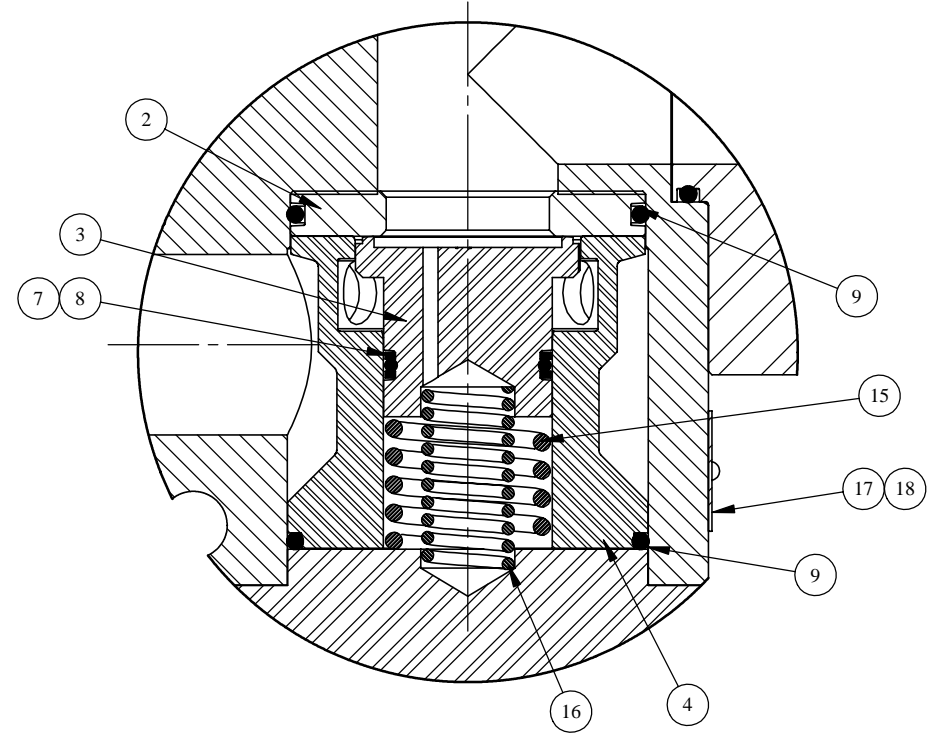
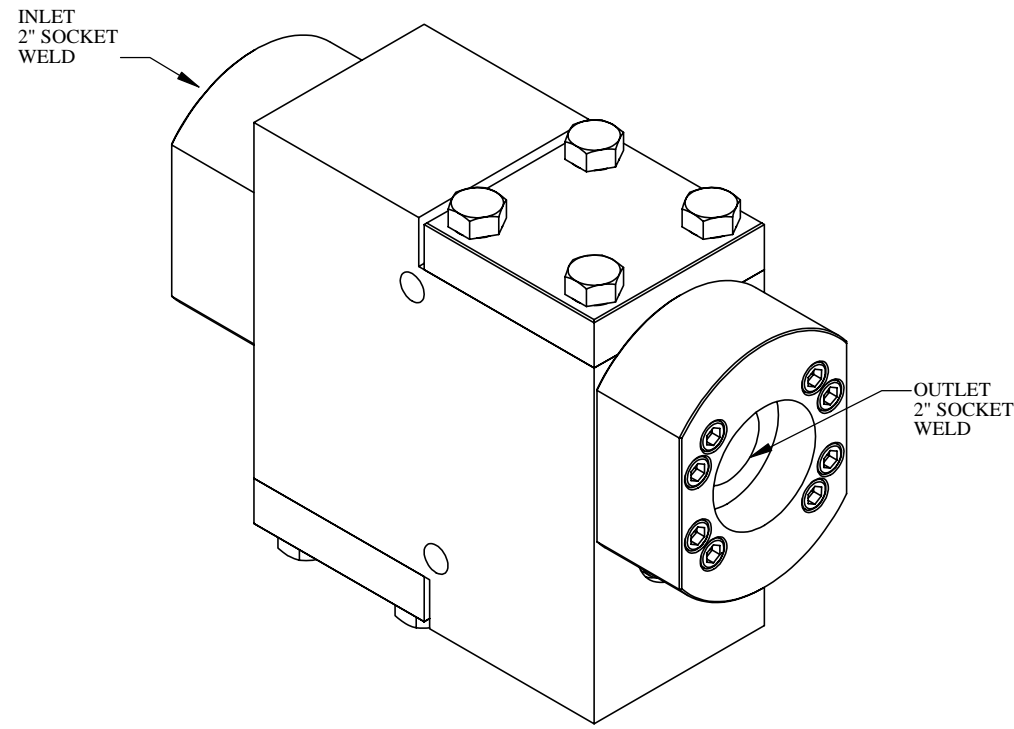
**FLOW DATA**  
 MAXIMUM FLOW CAPACITY - 320 GPM  
 Cv = 18  
 FLUIDS - WATER, AND MINERAL OIL  
 BASED HYDRAULIC FLUID

**PORTS**  
 INLET - 2" SOCKET WELD  
 OUTLET - 2" SOCKET WELD

**GENERAL DATA**  
 TEMPERATURE RANGE - +32°F TO +200°F  
 APPROX WEIGHT - 80 LBS  
 FIELD SERVICEABLE

**MATERIALS**  
 STAINLESS STEEL  
 DELRIN  
 NITRILE RUBBER

U.S. PATENT NO. 4,793,590



SCHEMATIC

DETAIL B

NOTES:  
 1. X DEPICTS PARTS IN REPAIR KIT 25156-0.2 RK/SK.  
 2. TORQUE MAIN FLANGE BOLTS (ITEM 13) TO 108 FT-LBS.  
 3. TORQUE CONNECTION FLANGE BOLTS (ITEMS 12) TO 18 FT-LBS.

MATERIAL SEE INDIV. BOM	TOLERANCES: DECIMALS FRACTIONS ANGLES X ± .1 ± 1/32 ± 1° XX ± .01 XXX ± .005 DEBURR BREAK SHARP EDGES .010 INTERNAL RADIUS .015 FINISH 68/	DRWN BY JOSE'	DATE 1/26/04	GILMORE VALVE CO. 1231 LUMPKIN RD. HOUSTON, TX. 77043	
TREATMENT	CONDITION	CHKD BY DJW	DATE 2/9/04		
PROC. NO. GVCEP-0218-T	THE INFORMATION CONTAINED IN THIS DRAWING IS THE SOLE PROPERTY OF GILMORE VALVE CO. UNLESS OTHERWISE STATED, ANY REPRODUCTION IN PART OR WHOLE WITHOUT THE WRITTEN PERMISSION OF GILMORE VALVE CO. IS PROHIBITED.	APPD BY TBT	DATE 2/11/04	VALVE, DOUBLE CHECK, 2" SOCKET WELD	
	DIMENSIONS ARE IN INCHES DO NOT SCALE DRAWING INTERPRET DIM. & CL. PER ASME Y14.5M - 1994	ERN NO. 00857	DATE 1/13/04	SIZE C	DWG NO. 25156-0.2
				SCALE 1:2	SOLIDWORKS SHEET 1 OF 1