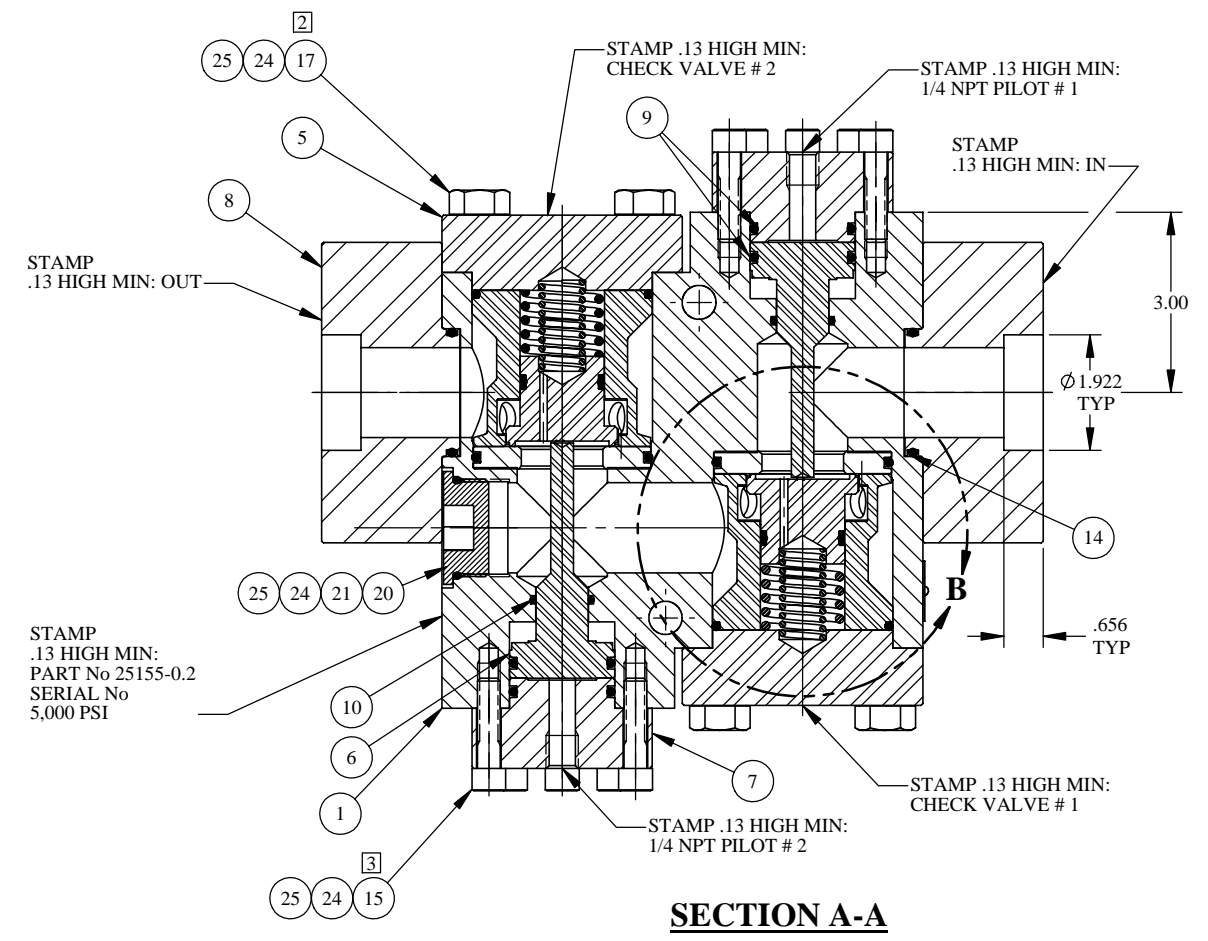
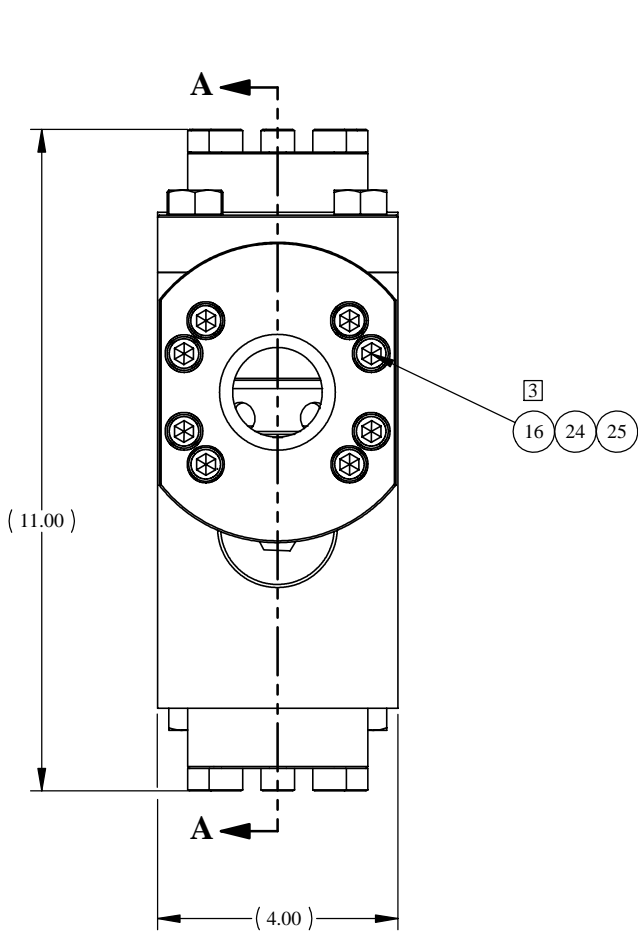


REV	ECN/ERN NO.	DRWN	CHKD	APPD
A	ERN 00857	JOSE' 1/29/04	DJW 2/9/04	TBT 2/11/04

ITEM NO.	QTY.	PART NO.	DESCRIPTION	RK	SK
1	1	24053	BODY, 1-1/2" PILOT CHECK VALVE		
2	2	27122-1	SEAL	X	X
3	2	23093	SEAL SLEEVE	X	
4	2	27140	CAGE		
5	2	23089	2" FLANGE		
6	2	23095	PISTON		
7	2	23091	2" PILOT FLANGE w/ 1/4" NPT		
8	2	24050	1-1/2" SOCKET WELD FLANGE		
9	4	18100-104C	O-RING	X	X
10	2	18100-066C	O-RING	X	X
11	2	18100-078B	O-RING	X	X
12	4	18110-131T	BACKUP RING	X	X
13	4	18100-115C	O-RING	X	X
14	2	18100-117C	O-RING	X	X
15	16	18224-003	S.H.C.S., 3/8-16 UNC X 1-1/2		
16	16	18224-006	S.H.C.S., 3/8-16 UNC X 2		
17	8	21053	H.H.C.S., 5/8-18 UNF X 1-5/8		
18	2	27121	SPRING, COMPRESSION		
19	2	12000	SPRING, COMPRESSION		
20	1	18603-020	HEX PLUG, 1-1/4 SAE		
21	1	18100-217C	O-RING	X	X
22	1	12225	NAME TAG		
23	2	21082-002	SCREW, DRIVE		
24	A/R	25822	ANTI SEIZE		
25	3	25822-1	ANTI SEIZE	X	X



**SECTION A-A**

**PRESSURE DATA**  
 MAXIMUM PRESSURE - 5,000 PSI  
 PROOF PRESSURE - 7,500 PSI  
 CRACKING PRESSURE - 80 PSI  
 PILOT PRESSURE/OUTLET RATIO - 1:4  
 PILOT VENT - EXTERNAL

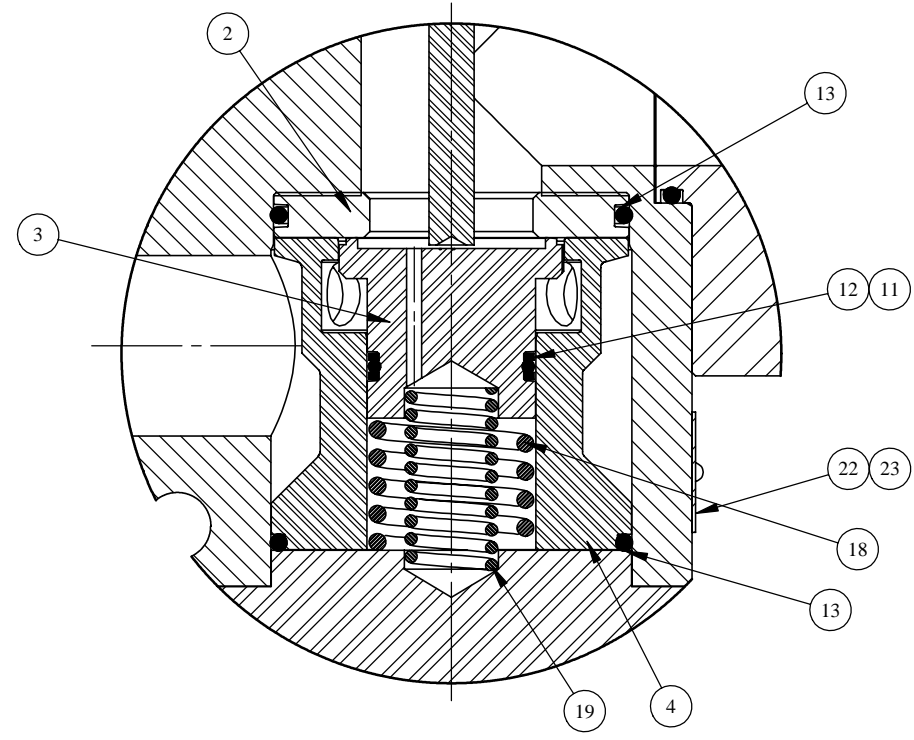
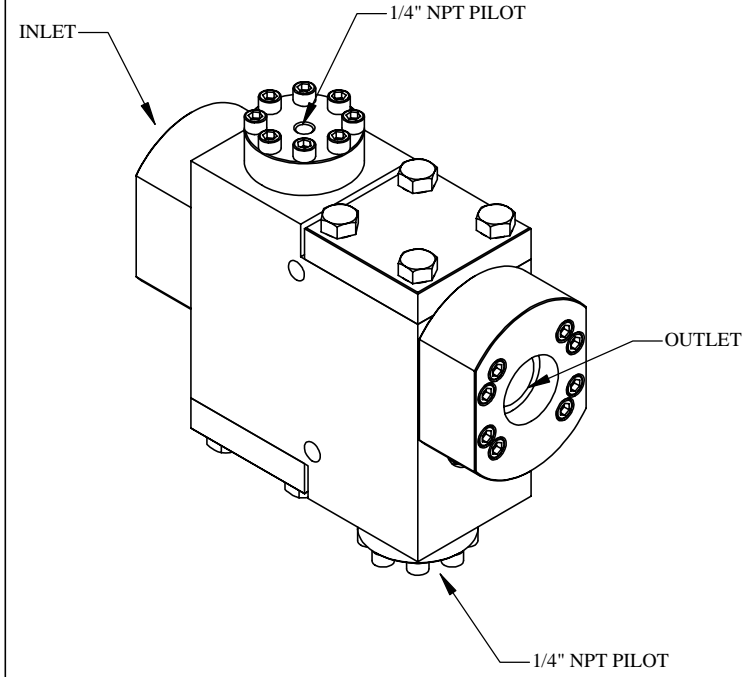
**FLOW DATA**  
 MAXIMUM FLOW CAPACITY - 320 GPM  
 Cv = 17  
 FLUIDS - WATER, AND MINERAL OIL BASED HYDRAULIC FLUID

**PORTS**  
 INLET - 1-1/2" SOCKET WELD  
 OUTLET - 1-1/2" SOCKET WELD  
 PILOT - 1/4" NPT

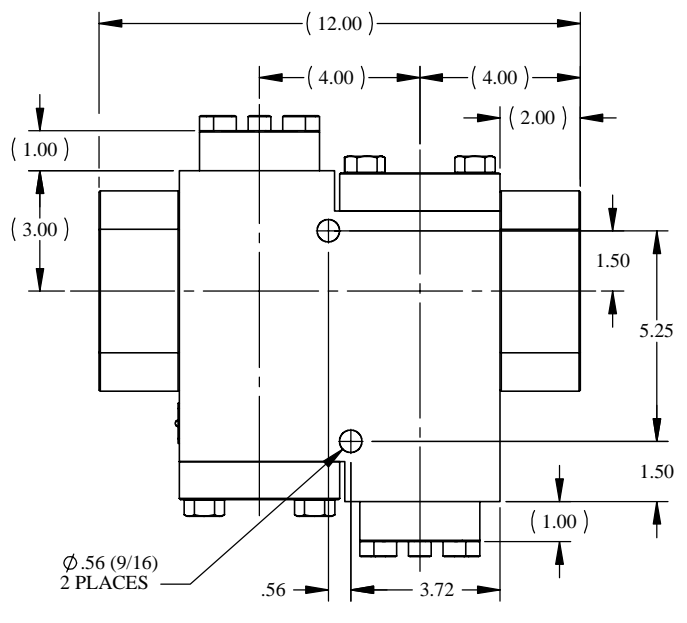
**GENERAL DATA**  
 TEMPERATURE RANGE - +32°F TO +200°F  
 APPROX WEIGHT - 84 LBS  
 FIELD SERVICEABLE

**MATERIALS**  
 STAINLESS STEEL  
 DELRIN  
 NITRILE RUBBER

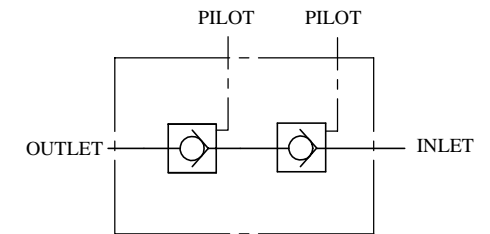
**U.S. PATENT NO. 4,793,590**



**DETAIL B**



**MOUNTING DETAIL (LEFT VIEW)**



**SCHEMATIC**

- NOTES:**
- TORQUE CONNECTION FLANGE BOLTS (ITEMS 15 & 16) TO 18 FT-LBS.
  - TORQUE MAIN FLANGE BOLTS (ITEM 17) TO 108 FT-LBS.
  - X DEPICTS PARTS IN REPAIR KIT 25155-0.2 RK/SK.

MATERIAL SEE INDIV. BOM	TOLERANCES: DECIMALS FRACTIONS ANGLES X ± .1 ± 1/32 ± .1°	DRWN BY JOSE'	DATE 1/29/04	<b>GILMORE VALVE CO.</b> 1231 LUMPKIN RD. HOUSTON, TX. 77043  <b>VALVE, DOUBLE CHECK, PILOT OPERATED,          1-1/2" SOCKET WELD</b>
TREATMENT	CONDITION	CHKD BY DJW	DATE 2/9/04	
PROC. NO. GVCEP-0217-T	DEBURR BREAK SHARP EDGES .010 INTERNAL RADIUS .015 FINISH 68/	APPD BY TBT	DATE 2/11/04	
THE INFORMATION CONTAINED IN THIS DRAWING IS THE SOLE PROPERTY OF GILMORE VALVE CO. UNLESS OTHERWISE STATED, ANY REPRODUCTION IN PART OR WHOLE WITHOUT THE WRITTEN PERMISSION OF GILMORE VALVE CO. IS PROHIBITED.		ERN NO. 00857	DATE 1/13/04	
DIMENSIONS ARE IN INCHES DO NOT SCALE DRAWING INTERPRET DIM. & TOL. PER ASME Y14.5M - 1994				SIZE C DWG NO. 25155-0.2 REV A
SCALE 1:2		SOLIDWORKS		SHEET 1 OF 1