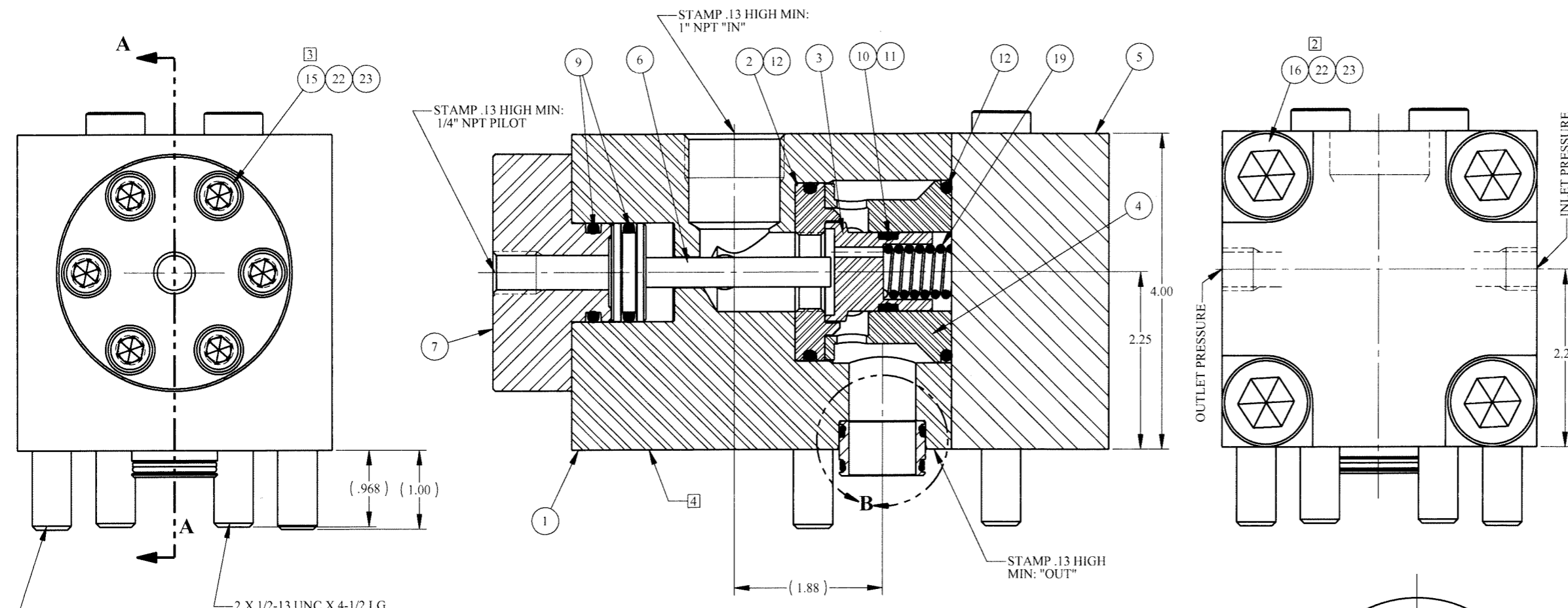
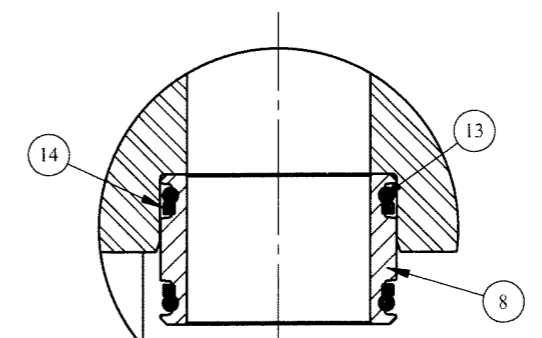
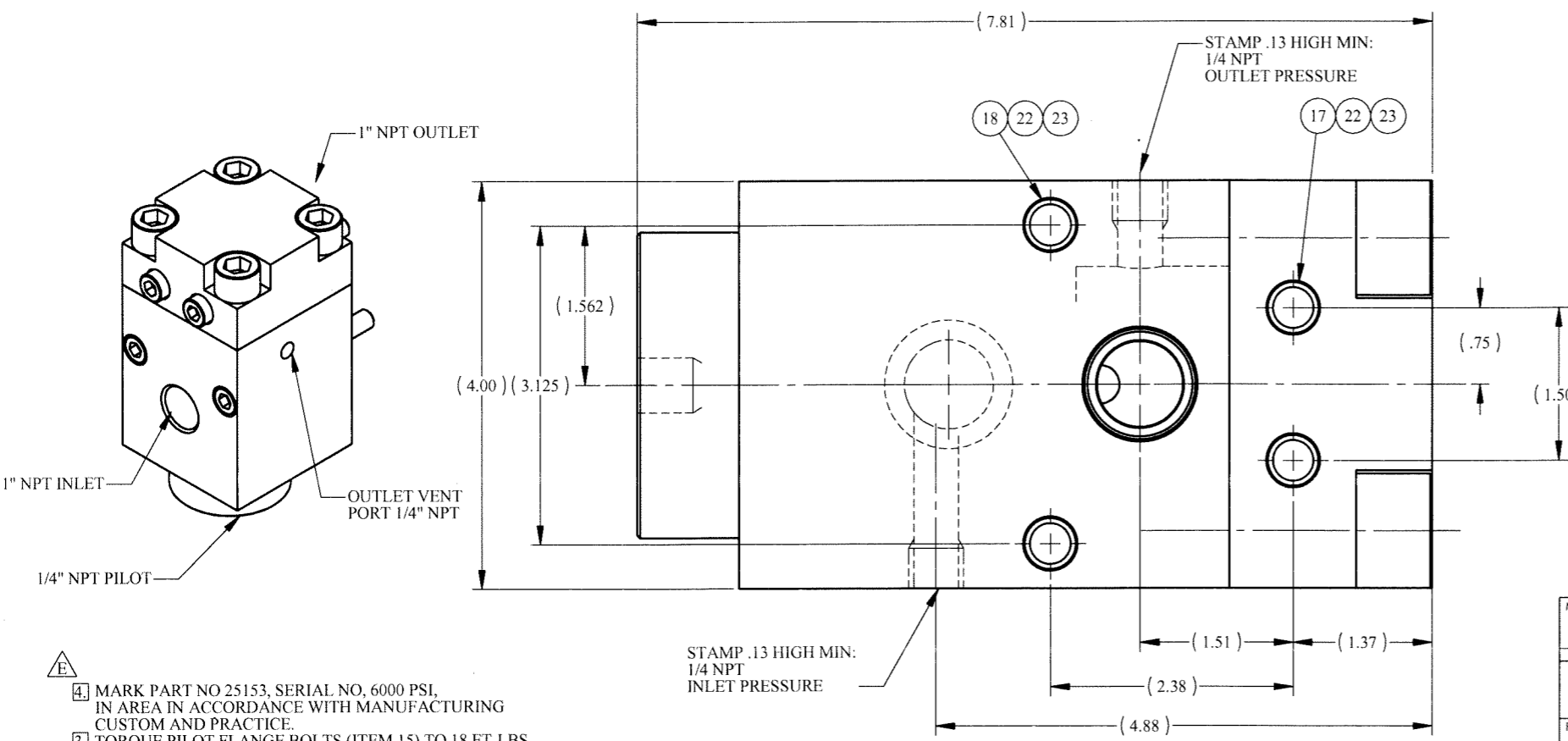


REV	ECN/ERN NO.	DRWN	CHKD	APPD
E	ECN 3049	JOSE' 2/23/06	BFM 2/24/06	BFM 2/24/06

ITEM NO.	QTY.	PART NO.	DESCRIPTION	RK	SK
1	1	23433	BODY, 1" NPT		
2	1	27157	SEAL	X	X
3	1	22909	SEAL SLEEVE	X	
4	1	22908	CAGE		
5	1	23572	1" FLANGE		
6	1	22912	PISTON		
7	1	23432	1" PILOT FLANGE W/ 1/4"NPT		
8	1	13051	SEAL SUB, 1"		
9	2	18100-107C	O-RING	X	X
10	1	18100-074B	O-RING	X	X
11	2	18110-115T	BACKUP RING	X	X
12	2	18100-102C	O-RING	X	X
13	2	18100-611B	O-RING	X	X
14	2	18110-025T	BACKUP RING	X	X
15	6	18220-023S	S.H.C.S., 3/8-16 UNC X 1		
16	4	18220-802S	S.H.C.S., 3/4-10 UNC X 2		
17	2	18220-309S	S.H.C.S., 1/2-13 UNC X 4-3/4		
18	2	18220-308S	S.H.C.S., 1/2-13 UNC X 4-1/2		
19	1	12050	SPRING, COMPRESSION		



2 X 1/2-13 UNC X 4-1/2 LG MOUNT. BOLTS
2 X 1/2-13 UNC X 4-3/4 LG MOUNT. BOLTS



DETAIL B
SEAL SUB POCKET CAVITY DETAIL

△

PRESSURE DATA
 MAXIMUM PRESSURE - 6,000 PSI
 PROOF PRESSURE - 9,000 PSI
 CRACKING PRESSURE - 110 PSI
 PILOT PRESSURE/OUTLET RATIO - 1:4
 PILOT VENT - INTERNAL

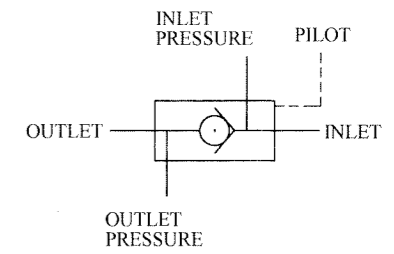
FLOW DATA
 MAXIMUM FLOW CAPACITY - 250 GPM
 Cv = 11.5
 FLUIDS - WATER, AND MINERAL OIL BASED HYDRAULIC FLUID

PORTS
 INLET - 1" NPT
 OUTLET - SPECIAL
 PILOT - 1/4" NPT
 INLET VENT PORT 1/4" NPT
 OUTLET VENT PORT 1/4" NPT

GENERAL DATA
 TEMPERATURE RANGE - +32°F TO +200°F
 APPROX WEIGHT - 31 LBS
 FIELD SERVICEABLE

MATERIALS
 STAINLESS STEEL
 PEEK
 NITRILE RUBBER

PATENT NO. 4,793,590 APPLIES



- △
4. MARK PART NO 25153, SERIAL NO, 6000 PSI, IN AREA IN ACCORDANCE WITH MANUFACTURING CUSTOM AND PRACTICE.
3. TORQUE PILOT FLANGE BOLTS (ITEM 15) TO 18 FT-LBS.
2. TORQUE MAIN FLANGE BOLTS (ITEM 16) TO 130 FT-LBS.
- NOTES: 1. X DEPICTS PARTS IN REPAIR KIT 25153 RK/SK.

MATERIAL SEE INDIV BOM ITEMS	UNLESS OTHERWISE SPECIFIED TOLERANCES: DECIMALS FRACTIONS ANGLES XX ± .1 ± 1/32 ± 1° .XX ± .01 .XXX ± .005 DEBURR BREAK SHARP EDGES .010 INTERNAL RADIUS .015 FINISH .02	DRWN BY CWC	DATE 5/28/98	GILMORE VALVE CO. 1231 LUMPKIN RD. HOUSTON, TX. 77043 VALVE, CHECK, PILOT OPERATED, 1" NPT, SUB PLATE MOUNTED
TREATMENT	CONDITION	CHKD BY DW	DATE 5/28/98	
PROC. NO.		APPD BY	DATE	
THE INFORMATION CONTAINED IN THIS DRAWING IS THE SOLE PROPERTY OF GILMORE VALVE CO. UNLESS OTHERWISE STATED. ANY REPRODUCTION IN PART OR WHOLE WITHOUT THE WRITTEN PERMISSION OF GILMORE VALVE CO. IS PROHIBITED.		ERN NO.	DATE	SIZE C DWG NO. 25153 REV E
DIMENSIONS ARE IN INCHES DO NOT SCALE DRAWING INTERPRET DIM. & TOL PER ASME Y14.5M - 1994				SCALE NTS SOLIDWORKS SHEET 1 OF 1