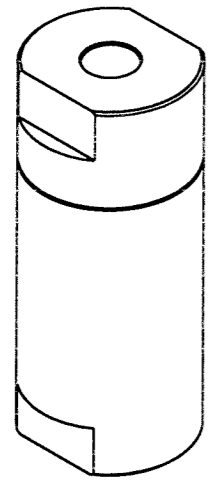


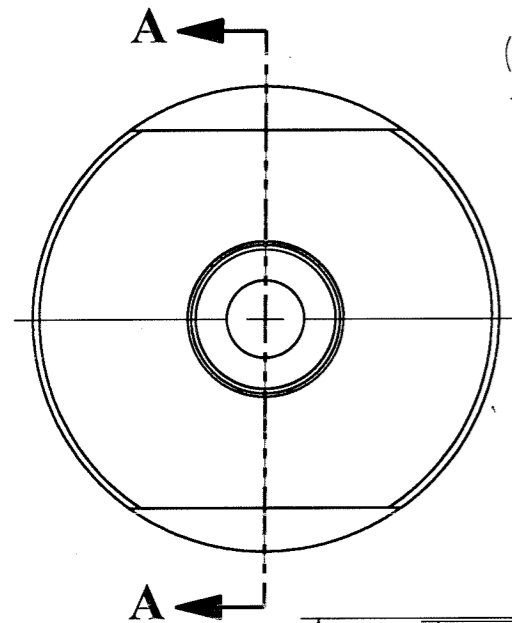
REV	ECN/ERN NO.	DRWN	CHKD	APPD
C	ECN 3147	WRC 8/22/07	SS 09/12/07	SS 09/12/07

ITEM NO.	QTY.	PART NO.	DESCRIPTION
1	1	27434-1	SEAT BODY
2	1	25998	SEAL RING
3	1	13021	POPPET, POPPET CHECK VALVE
4	1	13020	SPRING, COMPRESSION
5	1	27435-1	RETAINER BODY, POPPET CHECK VALVE
6	A/R	25822	ANTI SEIZE

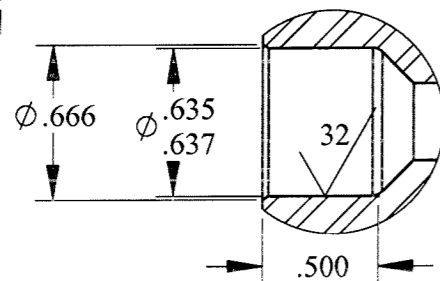


ISOMETRIC VIEW

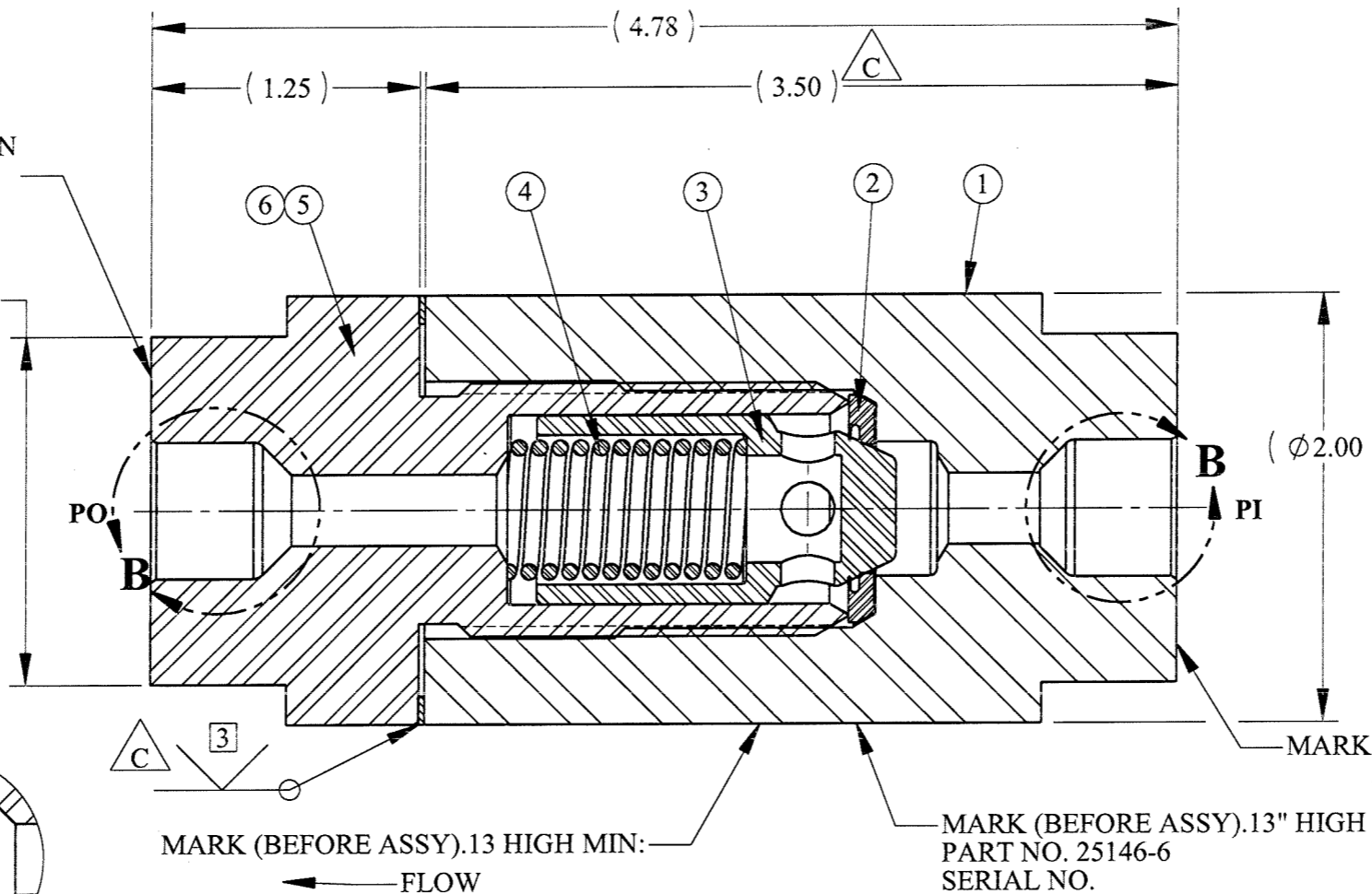
MARK (BEFORE ASSY) .13" HIGH MIN
5/8 SW



(1.625)
ACROSS
FLATS



**DETAIL B (REF)
2 PLACES**



SECTION A-A

MARK (BEFORE ASSY).13 HIGH MIN:

MARK (BEFORE ASSY).13" HIGH MIN:
PART NO. 25146-6
SERIAL NO.
REV. NO.
15,000 PSI WP

PRESSURE DATA

DESIGN SUPPLY PRESSURE (PI, PO): 15,000 PSI
PROOF SUPPLY PRESSURE (PI, PO): 22,250 PSI
DESIGN CRACKING PRESSURE: 60 PSI±10%
(54-66 PSI)

FLOW DATA

Cv (CALCULATED)- 1.99

PORTS

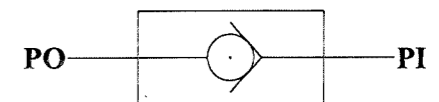
SUPPLY IN (PI): 5/8" SOCKET WELD
SUPPLY OUT (PO): 5/8" SOCKET WELD

GENERAL DATA

TEMP RANGE: 0°F TO 250°F
APPROX WEIGHT: 3.6 LBS
NON-FIELD SERVICEABLE
NACE MR-01-75
API-PR2 CODE COMPATIBLE

MATERIALS

2507 SUPER DUPLEX SS
ELGILOY
STELLITE NO.6
NITRONIC 60



SCHEMATIC

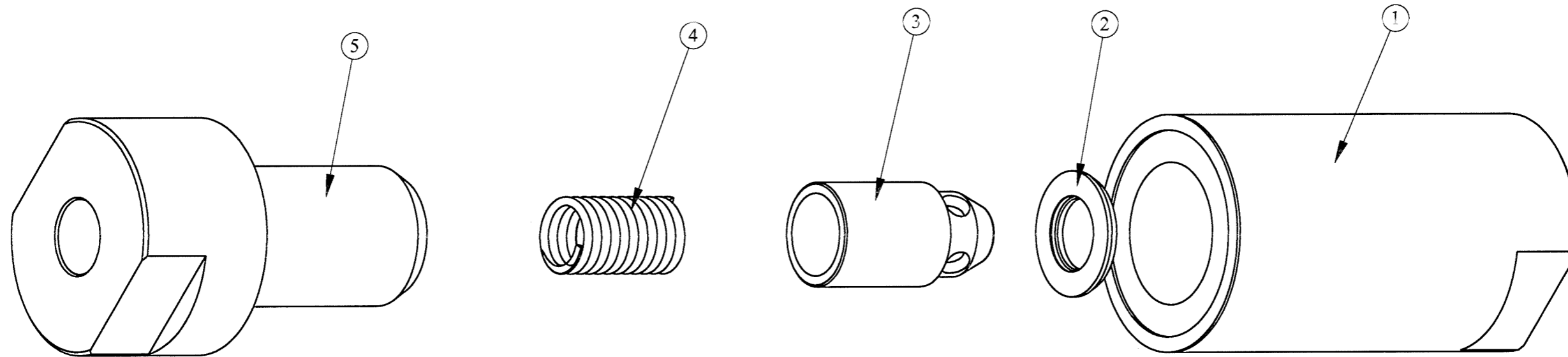
5. TEST FLANGE - TST 10138.
4. FOR ASSEMBLY PROCEDURE, REFER TO GVCP-0394-A.
3. WELD SUPPLIED BY ACUTE TECHNOLOGICAL SERVICES INC. PER WELD SPECIFICATION: ATS/M-GTAW-68D BY GVC.
2. TORQUE RETAINER BODY AT ASSEMBLY TO 150±10 FT-LBS.
NOTES: 1. APPLY ANTI SEIZE COMPOUND TO RETAINER BODY THREADS PRIOR TO ASSEMBLY.


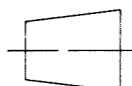
MATERIAL REFER TO INDIV BOM ITEMS		UNLESS OTHERWISE SPECIFIED TOLERANCES:		
TREATMENT	CONDITION	DECIMALS	FRACTIONS	ANGLES
		.X ± .1	± 1/32	± 1°
		.XX ± .01		
		.XXX ± .005		
PROC. NO.		DEBURR BREAK SHARP EDGES .010 INTERNAL RADIUS .015 FINISH 63		
THE INFORMATION CONTAINED IN THIS DRAWING IS THE SOLE PROPERTY OF GILMORE VALVE CO. UNLESS OTHERWISE STATED, ANY REPRODUCTION IN PART OR WHOLE WITHOUT THE WRITTEN PERMISSION OF GILMORE VALVE CO. IS PROHIBITED.		DIMENSIONS ARE IN INCHES DO NOT SCALE DRAWING INTERPRET DIM. & TOL. PER ASME Y14.5M - 1994		

DRWN BY DDG	DATE 3/6/02
CHKD BY DJW	DATE 3/6/02
APPD BY TBT	DATE 3/6/02
ERN NO. 00601	DATE 3/6/02

GILMORE VALVE CO. 1231 LUMPKIN RD. HOUSTON, TX. 77043			
VALVE, CHECK, 1/2" POPPET 5/8" SOCKET WELD			
SIZE B	DWG NO. 25146-6	REV C	
SCALE NTS	SOLIDWORKS	SHEET 1 OF 2	

REV	ECN/ERN NO.	DRWN	CHKD	APPD
C	ECN 3147	WRC 8/22/07	SS 09/12/07	SS 09/12/07



MATERIAL REFER TO INDIV BOM ITEMS		UNLESS OTHERWISE SPECIFIED TOLERANCES:		DRWN BY DDG	DATE 3/6/02	GILMORE VALVE CO. 1231 LUMPKIN RD. HOUSTON, TX. 77043			
TREATMENT	CONDITION	DECIMALS	FRACTIONS	ANGLES	CHKD BY DJW				DATE 3/6/02
		.X ± .1	± 1/32	± 1°	APPD BY TBT	DATE 3/6/02	VALVE, CHECK, 1/2" POPPET 5/8" SOCKET WELD		
PROC. NO.		.XX ± .01			ERN NO. 00601	DATE 3/6/02			
THE INFORMATION CONTAINED IN THIS DRAWING IS THE SOLE PROPERTY OF GILMORE VALVE CO. UNLESS OTHERWISE STATED, ANY REPRODUCTION IN PART OR WHOLE WITHOUT THE WRITTEN PERMISSION OF GILMORE VALVE CO. IS PROHIBITED.		DIMENSIONS ARE IN INCHES DO NOT SCALE DRAWING INTERPRET DIM. & TOL. PER ASME Y14.5M - 1994		 		SIZE B	DWG NO. 25146-6	REV C	
				SCALE NTS		SOLIDWORKS	SHEET 2 OF 2		