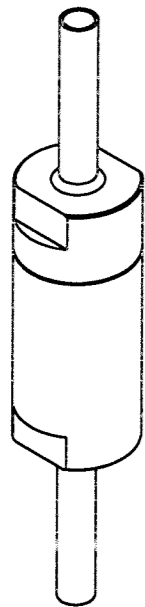


REV	ECN/ERN NO.	DRWN	CHKD	APPD
C	ECN 3128	JOSE 3/28/07	SS 03/30/07	SS 03/30/07



**ISOMETRIC VIEW**

ITEM NO.	QTY.	PART NO.	DESCRIPTION
1	1	27841	SEAT BODY
2	1	25998	SEAL RING
3	1	13021	POPPET, POPPET CHECK VALVE
4	1	13020	SPRING, COMPRESSION
5	1	27842	RETAINER BODY, POPPET CHECK VALVE

**PRESSURE DATA**

DESIGN SUPPLY PRESSURE (PI, PO): 10,000 PSI  
 PROOF SUPPLY PRESSURE (PI, PO): 12,500 PSI  
 DESIGN CRACKING PRESSURE: 60 PSI ± 10%  
 (54 - 66 PSI)

**FLOW DATA**

Cv (CALCULATED)- 1.99

**PORTS**

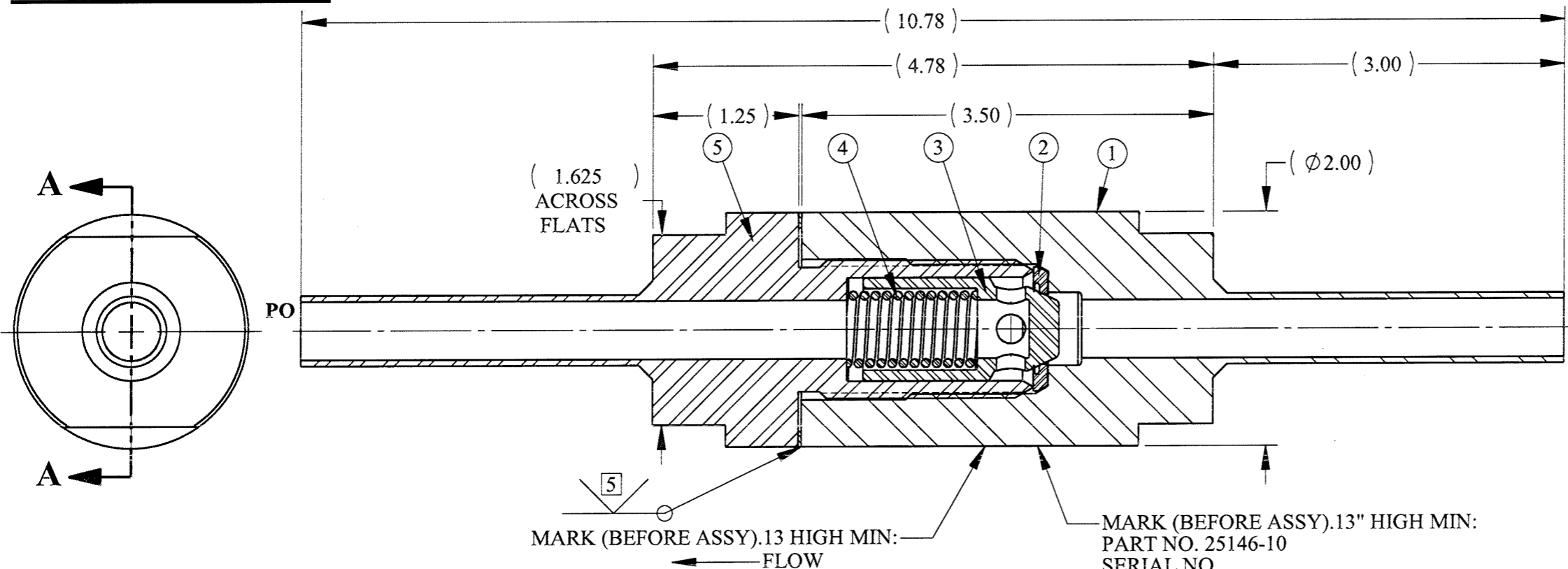
SUPPLY IN (PI): Ø.602 X Ø.500 BUTT WELD  
 SUPPLY OUT (PO): Ø.602 X Ø.500 BUTT WELD

**GENERAL DATA**

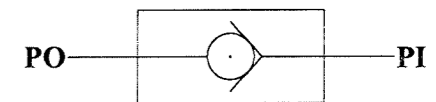
TEMP RANGE: 0°F TO 250°F  
 APPROX WEIGHT: 4.0 LBS  
 NON-FIELD SERVICEABLE  
 NACE MR-01-75  
 API-PR2 CODE COMPATIBLE

**MATERIALS**

2507 SUPER DUPLEX SS (ITEMS 1 & 5)  
 UNS S32750, UNS S32760, OR UNS S39274  
 ELGILOY  
 STELLITE NO.6  
 NITRONIC 60



MARK (BEFORE ASSY).13 HIGH MIN:  
 PART NO. 25146-10  
 SERIAL NO.  
 REV. NO.  
 10,000 PSI WP



**SCHEMATIC**

**SECTION A-A**

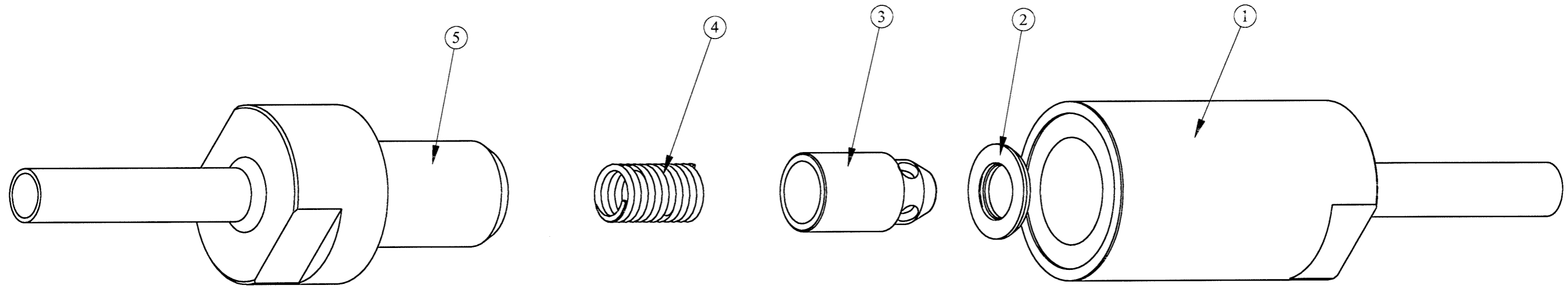
5 WELD SUPPLIED BY ACUTE TECHNOLOGICAL SERVICES INC.  
 PER WELD SPECIFICATION: ATS/M-GTAW-68

4. TEST USING TST 10138 AND TST 10191.  
 3. TORQUE RETAINER BODY AT ASSEMBLY TO 150 ± 10 FT-LBS.  
 2. FOR ASSEMBLY PROCEDURE, REFER TO GVCP-0394-A

NOTES: 1. APPLY ANTI SEIZE COMPOUND TO RETAINER BODY THREADS  
 PRIOR TO ASSEMBLY.

MATERIAL REFER TO INDIV BOM ITEMS		UNLESS OTHERWISE SPECIFIED TOLERANCES: DECIMALS FRACTIONS ANGLES .X ± .1 ± 1/32 ± 1° .XX ± .01 .XXX ± .005		DRWN BY WRC	DATE 1/27/07	GILMORE VALVE CO. 1231 LUMPKIN RD. HOUSTON, TX. 77043			
TREATMENT	CONDITION	DEBURR BREAK SHARP EDGES .010 INTERNAL RADIUS .015 FINISH 63/	CHKD BY SS	DATE 2/02/07					
PROC. NO.		DIMENSIONS ARE IN INCHES DO NOT SCALE DRAWING INTERPRET DIM. & TOL. PER ASME Y14.5M - 1994	APPD BY SS	DATE 2/02/07					
			ERN NO. 01126	DATE 1/26/07	VALVE, CHECK, 1/2" POPPET Ø.602 X Ø.500 BUTT WELD		SIZE B	DWG NO. 25146-10	REV C
			SCALE NTS		SOLIDWORKS		SHEET 1 OF 2		

REV	ECN/ERN NO.	DRWN	CHKD	APPD
C	ECN 3128	JOSE' 3/28/07	5508/30/07	5508/30/07



MATERIAL REFER TO INDIV BOM ITEMS		UNLESS OTHERWISE SPECIFIED TOLERANCES:		DRWN BY <b>WRC</b>	DATE 1/27/07	<b>GILMORE VALVE CO.</b> 1231 LUMPKIN RD. HOUSTON, TX. 77043				
TREATMENT	CONDITION	DECIMALS	FRACTIONS	ANGLES	CHKD BY <b>SS</b>				DATE 2/02/07	
		.X ± .1	± 1/32	± 1°	APPD BY <b>SS</b>	DATE 2/02/07	VALVE, CHECK, 1/2" POPPET Ø.602 X Ø.500 BUTT WELD			
PROC. NO.		.XX ± .01			ERN NO. 01126	DATE 1/26/07				
THE INFORMATION CONTAINED IN THIS DRAWING IS THE SOLE PROPERTY OF GILMORE VALVE CO. UNLESS OTHERWISE STATED, ANY REPRODUCTION IN PART OR WHOLE WITHOUT THE WRITTEN PERMISSION OF GILMORE VALVE CO. IS PROHIBITED.		DEBURR BREAK SHARP EDGES .010 INTERNAL RADIUS .015 FINISH 63		DIMENSIONS ARE IN INCHES DO NOT SCALE DRAWING INTERPRET DIM. & TOL. PER ASME Y14.5M - 1994				SIZE <b>B</b>	DWG NO. 25146-10	REV <b>C</b>
						SCALE	NTS	SOLIDWORKS	SHEET 2 OF 2	