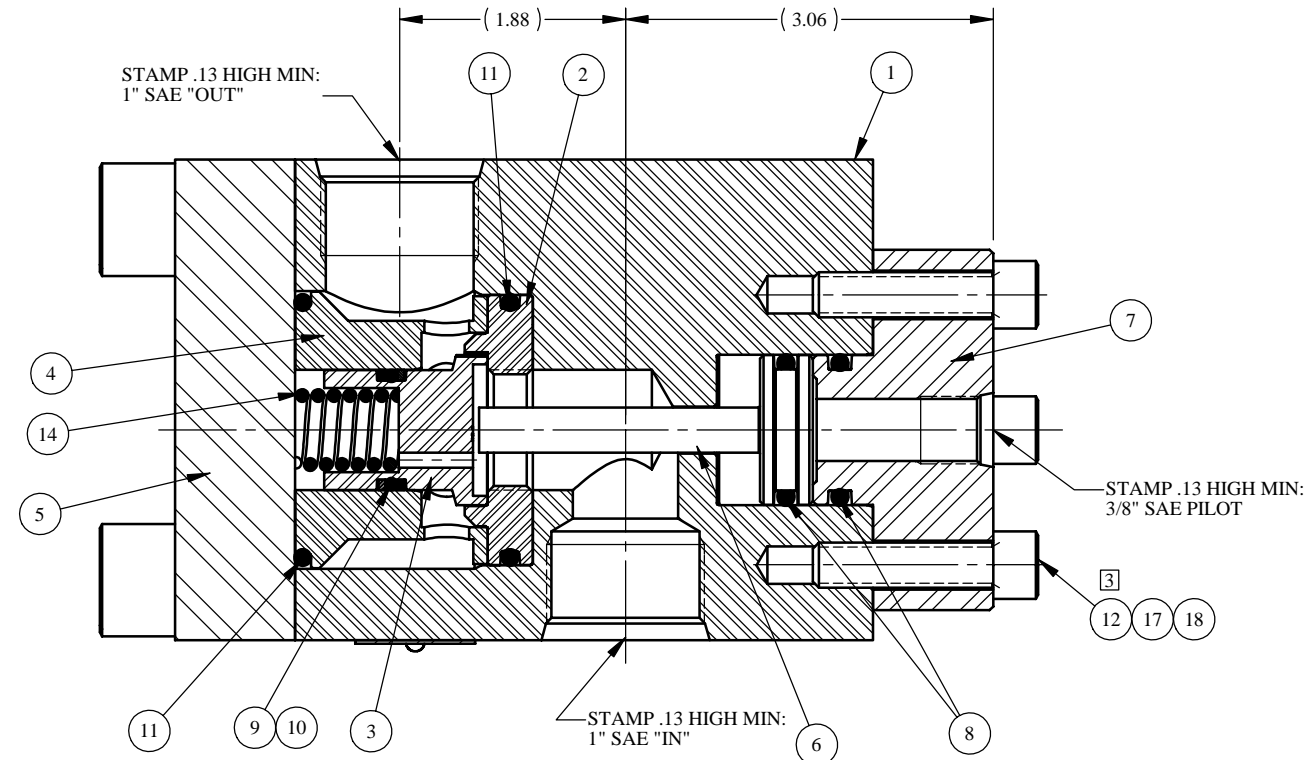


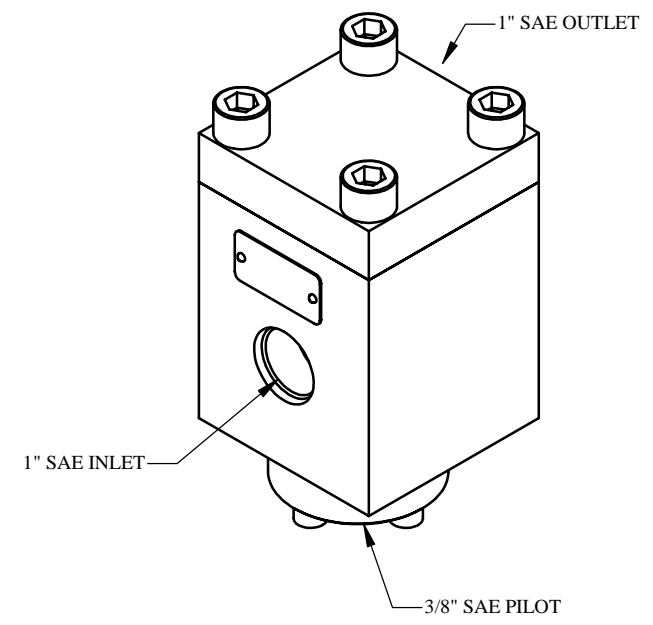
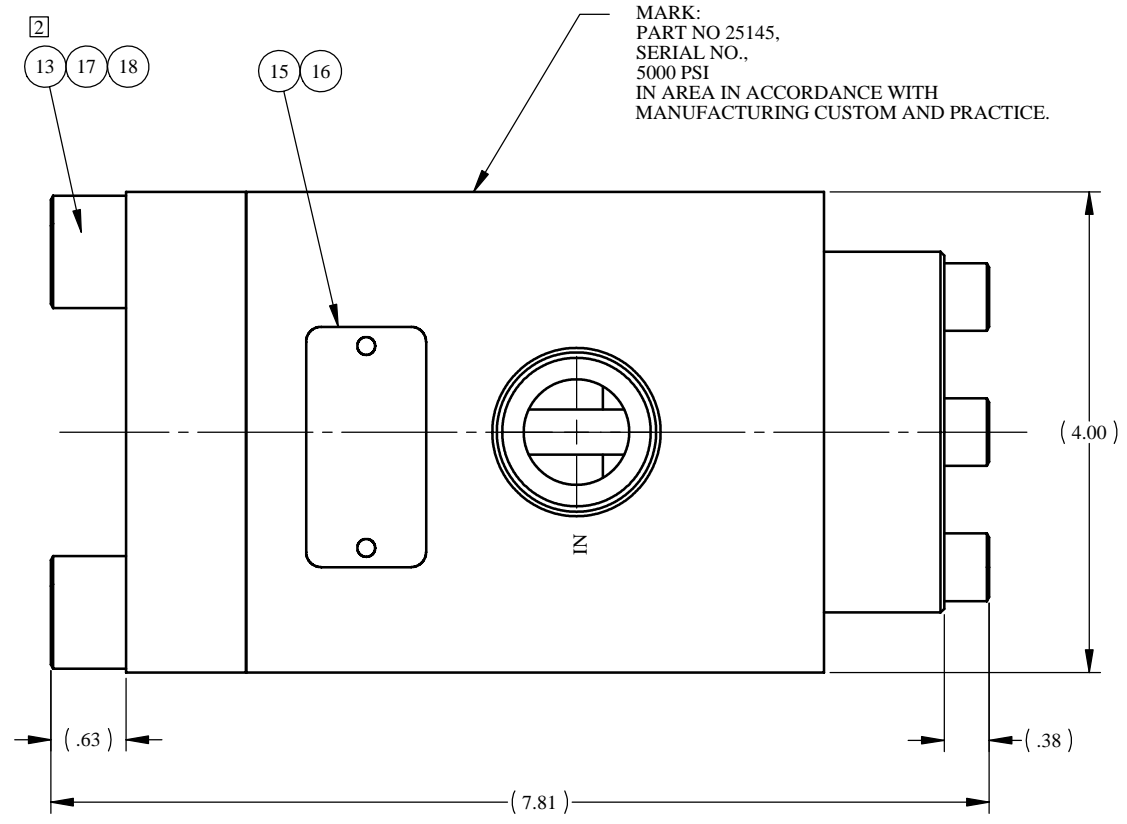
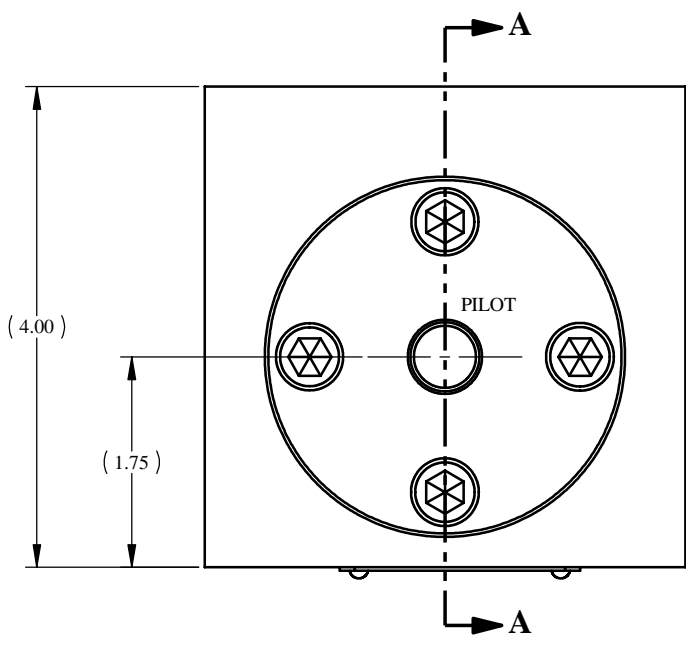
REV	ECN/ERN NO.	DRWN	CHKD	APPD
C	ECN 2104	JK 4/5/01	HH 5/11/01	HH 5/11/01

ITEM NO.	QTY.	PART NO.	DESCRIPTION	RK	SK
1	1	23835	BODY, 1" SAE		
2	1	27157	SEAL	X	X
3	1	22909	SEAL SLEEVE	X	
4	1	22908	CAGE		
5	1	22907	3/4" FLANGE		
6	1	22912	PISTON		
7	1	13003	PILOT FLANGE W/ 3/8" SAE		
8	2	18100-107C	O-RING	X	X
9	1	18100-074B	O-RING	X	X
10	2	18110-115T	BACKUP RING	X	X
11	2	18100-102C	O-RING	X	X
12	4	18220-002S	S.H.C.S., 3/8-16 UNC X 1-1/2		
13	4	18224-031	S.H.C.S., 5/8-11 UNC X 1-3/4		
14	1	12050	COMPRESSION SPRING		
15	1	12225	NAME TAG		
16	2	21082-002	SCREW, DRIVE		
17	A/R	25822	ANTI SEIZE		
18	1	25822-1	ANTI SEIZE PKTS	X	X

△ C



SECTION A-A



PRESSURE DATA

MAXIMUM PRESSURE - 5,000 PSI
 PROOF PRESSURE - 7,500 PSI
 CRACKING PRESSURE - 110 PSI
 PILOT PRESSURE/OUTLET RATIO - 1:4
 PILOT VENT - INTERNAL

FLOW DATA

MAXIMUM FLOW CAPACITY - 250 GPM
 Cv = 11.5
 FLUIDS - WATER, AND MINERAL OIL
 BASED HYDRAULIC FLUID

PORTS

INLET - 1" SAE
 OUTLET - 1" SAE
 PILOT - 3/8" SAE

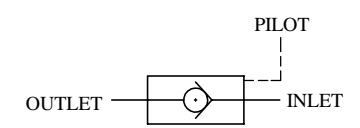
GENERAL DATA

TEMPERATURE RANGE - +32°F TO +200°F
 APPROX WEIGHT - 27 LBS
 FIELD SERVICEABLE

MATERIALS

STAINLESS STEEL
 PEEK
 NITRILE RUBBER

PATENT NO. 4,793,590 APPLIES



SCHEMATIC

- NOTES:
- TORQUE PILOT FLANGE BOLTS (ITEM 12) TO 18 FT-LBS.
 - TORQUE MAIN FLANGE BOLTS (ITEM 13) TO 115 FT-LBS.
 - X DEPICTS PARTS IN REPAIR KIT 25145 RK/SK.

△ C

MATERIAL SEE INDIV BOM ITEMS		UNLESS OTHERWISE SPECIFIED TOLERANCES: DECIMALS FRACTIONS ANGLE X ± .1 ± 1/32 ± 1° XX ± .01 XXX ± .005 DEBURR BREAK SHARP EDGES .010 INTERNAL RADIUS .015 FINISH 63		DRWN BY JOSE'	DATE 1/15/97	GILMORE VALVE CO. 1231 LUMPKIN RD. HOUSTON, TX. 77043	
TREATMENT	CONDITION	DECIMALS	FRACTIONS	ANGLE	DATE		
PROC. NO.		DIMENSIONS ARE IN INCHES DO NOT SCALE DRAWING INTERPRET DIM. & TOL. PER ASME Y14.5M - 1994		CHKD BY	DATE	VALVE, CHECK, PILOT OPERATED, 1" SAE	
				APPD BY OW	DATE		
				ERN NO.	DATE	SIZE C	DWG NO. 25145
						SCALE 1:1	SOLIDWORKS
						SHEET 1 OF 1	