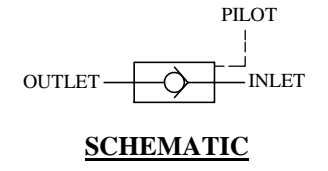
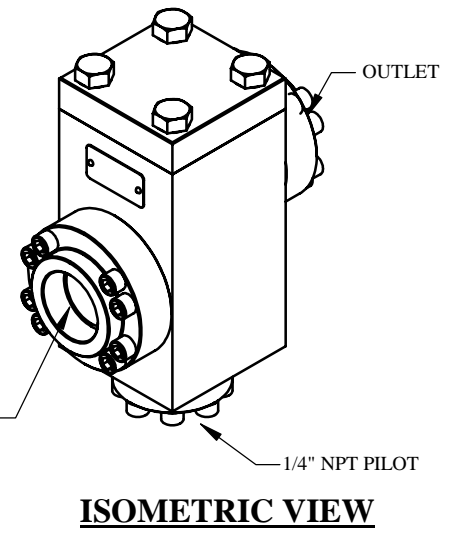
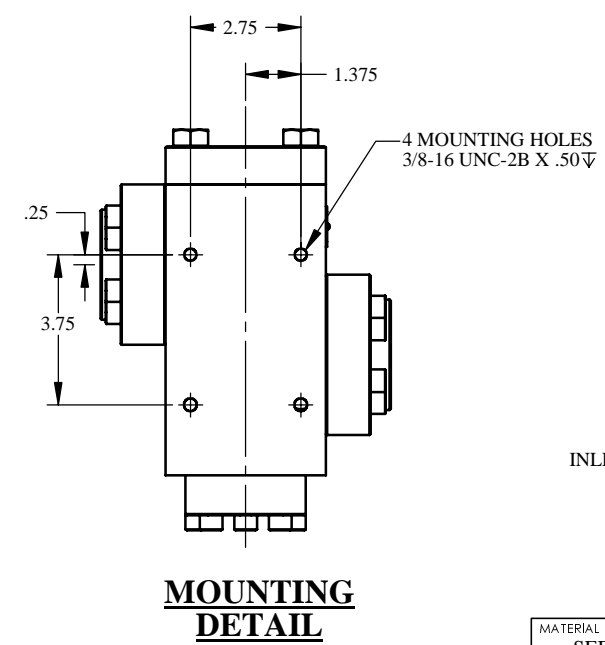
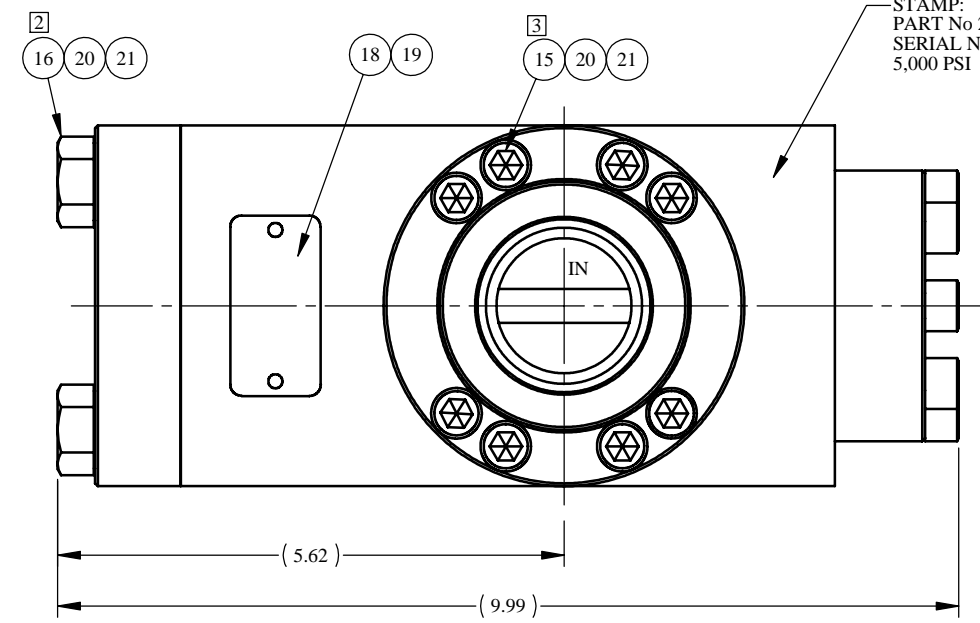
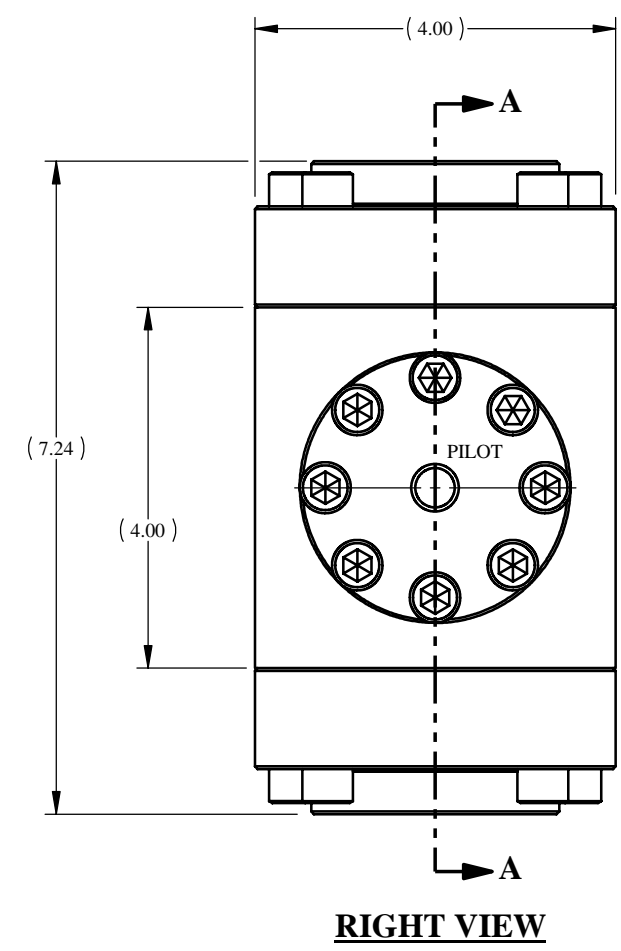
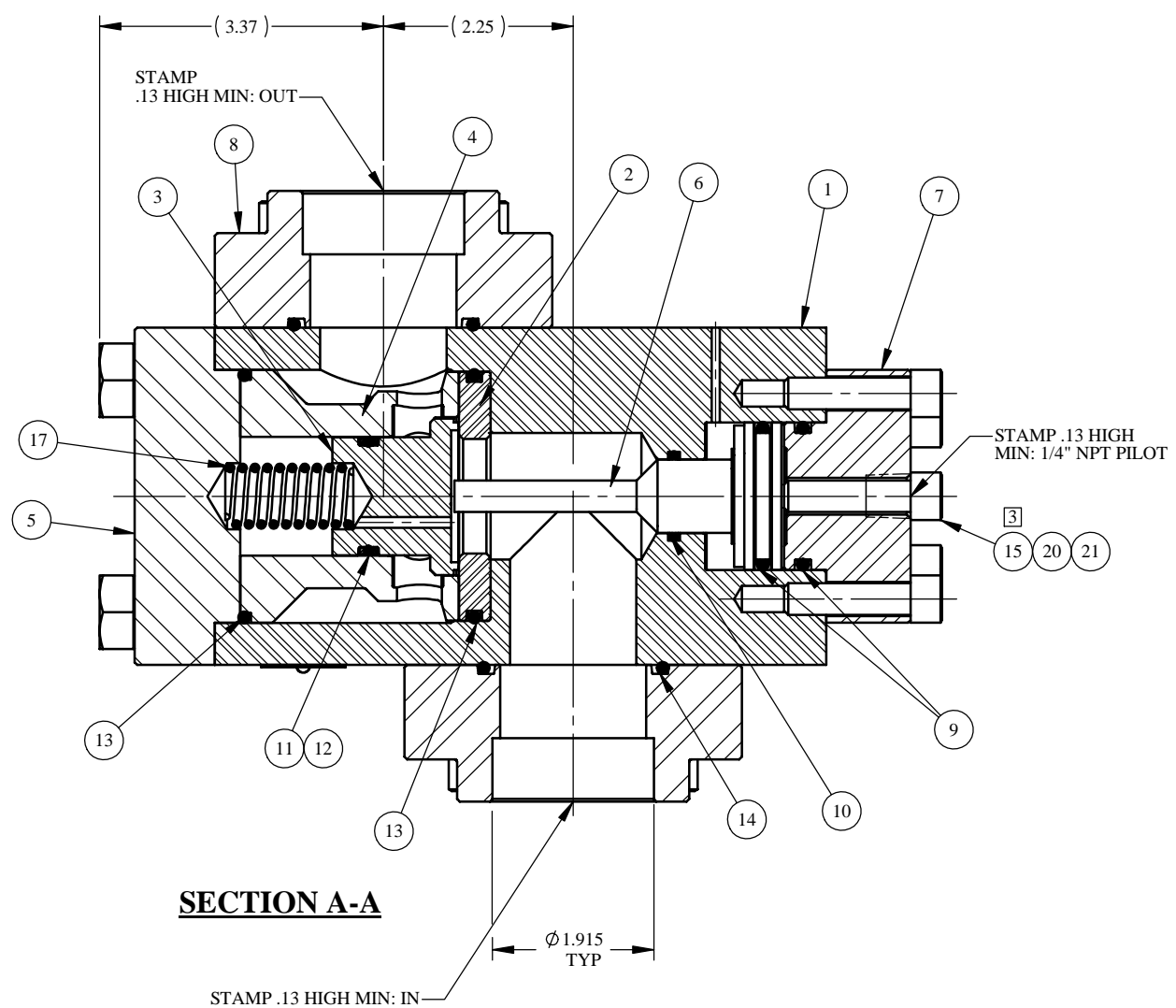


REV	ECN/ERN NO.	DRWN	CHKD	APPD
A	ERN 00874	JOSE' 3/24/04	DJW 3/24/04	TBT 3/24/04

ITEM NO.	QTY.	PART NO.	DESCRIPTION	RK	SK
1	1	33055	BODY, 1-1/2"		
2	1	27122-1	SEAL	X	X
3	1	23093	SEAL SLEEVE	X	
4	1	27140	CAGE		
5	1	23089	2" FLANGE		
6	1	23095	PISTON		
7	1	23091	2" PILOT FLANGE w/ 1/4" NPT		
8	2	12976	1-1/2" SOCKET WELD FLANGE		
9	2	18100-104C	O-RING	X	X
10	1	18100-066C	O-RING	X	X
11	1	18100-078B	O-RING	X	X
12	2	18110-131T	BACKUP RING	X	X
13	2	18100-115C	O-RING	X	X
14	2	18100-102C	O-RING	X	X
15	24	18224-003	S.H.C.S., 3/8-16 UNC X 1-1/2		
16	4	21053	H.H.C.S., 5/8-18 UNF X 1-5/8		
17	1	12000	SPRING, COMPRESSION		
18	1	12225	NAME TAG		
19	2	21082-002	SCREW, DRIVE		
20	A/R	25822	ANTI SEIZE		
21	1	25822-1	ANTI SEIZE PKTS	X	X



**PRESSURE DATA**

MAXIMUM PRESSURE - 5,000 PSI  
 PROOF PRESSURE - 7,500 PSI  
 CRACKING PRESSURE - 35 PSI  
 PILOT PRESSURE/OUTLET RATIO - 1:4  
 PILOT VENT - EXTERNAL

**FLOW DATA**

MAXIMUM FLOW CAPACITY - 320 GPM  
 Cv = 30  
 FLUIDS - WATER, AND MINERAL OIL  
 BASED HYDRAULIC FLUID

**PORTS**

INLET - 1-1/2" SOCKET WELD  
 OUTLET - 1-1/2" SOCKET WELD  
 PILOT - 1/4" NPT

**GENERAL DATA**

TEMPERATURE RANGE - +32°F TO +200°F  
 APPROX WEIGHT - 46 LBS  
 FIELD SERVICEABLE

**MATERIALS**

316 STAINLESS STEEL  
 17-4 PH  
 303 STAINLESS STEEL  
 302 STAINLESS STEEL  
 NITRONIC 60  
 A-286  
 DELRIN  
 NITRILE RUBBER  
 TEFLON

**U.S. PATENT NO. 4,793,590**

MATERIAL SEE INDIV. BOM	TOLERANCES: DECIMALS FRACTIONS ANGLES X ± .1 ± 1/32 ± 1° XX ± .01 XXX ± .005	DRWN BY JOSE'	DATE 3/24/04	<b>GILMORE VALVE CO.</b> 1231 LUMPKIN RD. HOUSTON, TX. 77043  VALVE, CHECK, PILOT OPERATED 1-1/2" SOCKET WELD	
TREATMENT	CONDITION	CHKD BY DJW	DATE 3/24/04		
PROC. NO.	DEBURF BREAK SHARP EDGES .010 INTERNAL RADIUS .015 FINISH 68	APPD BY TBT	DATE 3/24/04		
THE INFORMATION CONTAINED IN THIS DRAWING IS THE SOLE PROPERTY OF GILMORE VALVE CO. UNLESS OTHERWISE STATED, ANY REPRODUCTION IN PART OR WHOLE WITHOUT THE WRITTEN PERMISSION OF GILMORE VALVE CO. IS PROHIBITED.		ERN NO. 00874	DATE 3/23/04		
DIMENSIONS ARE IN INCHES DO NOT SCALE DRAWING INTERPRET DIM. & TOL. PER ASME Y14.5M - 1994		SIZE C		DWG NO. 25144-0.2	REV A
NOTES: 1. X DEPICTS PARTS IN REPAIR KIT 25144-0.2 RK/SK.		SCALE NTS		SHEET 1 OF 1	

- NOTES:**
- TORQUE PILOT AND CONNECTION FLANGE BOLTS (ITEM 15) TO 18 FT-LBS.
  - TORQUE MAIN FLANGE BOLTS (ITEM 16) TO 108 FT-LBS.
  - X DEPICTS PARTS IN REPAIR KIT 25144-0.2 RK/SK.