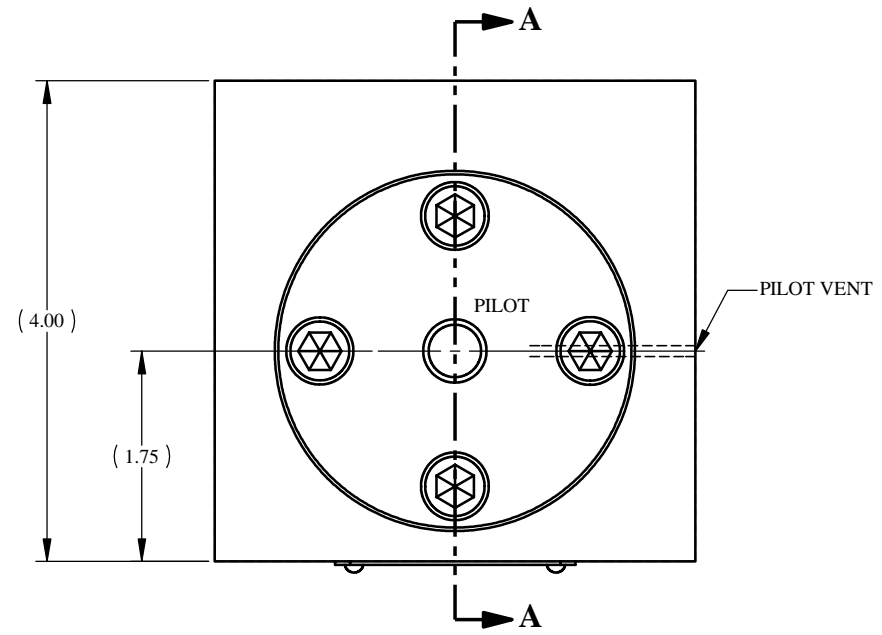
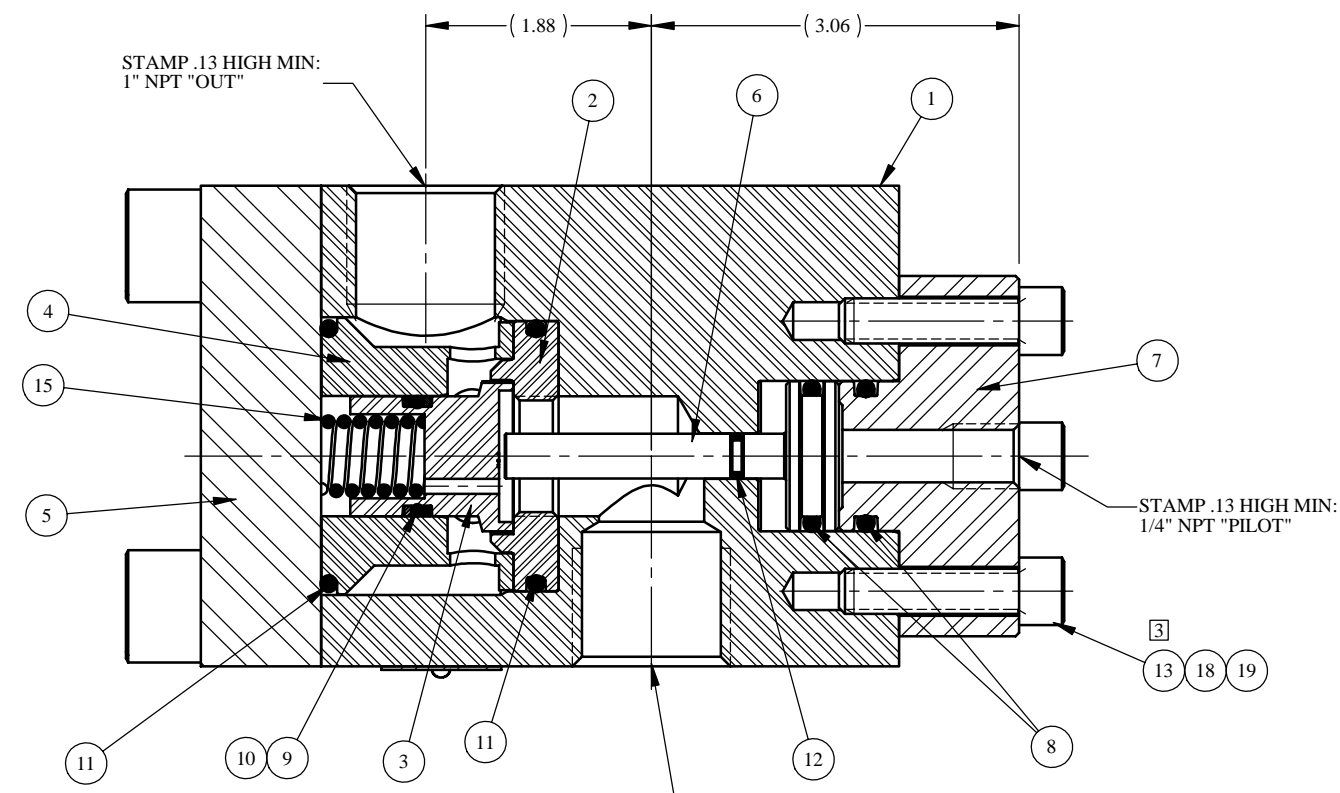
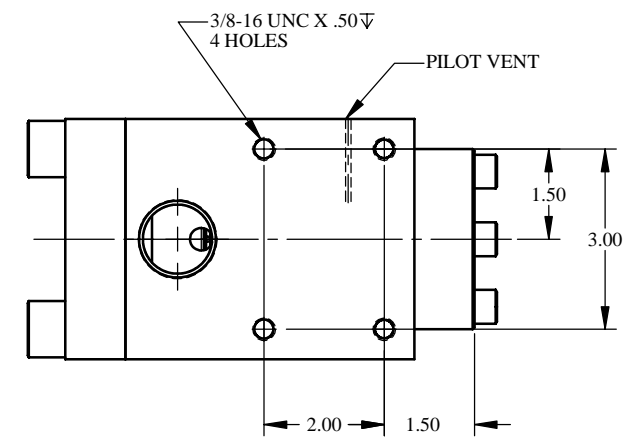
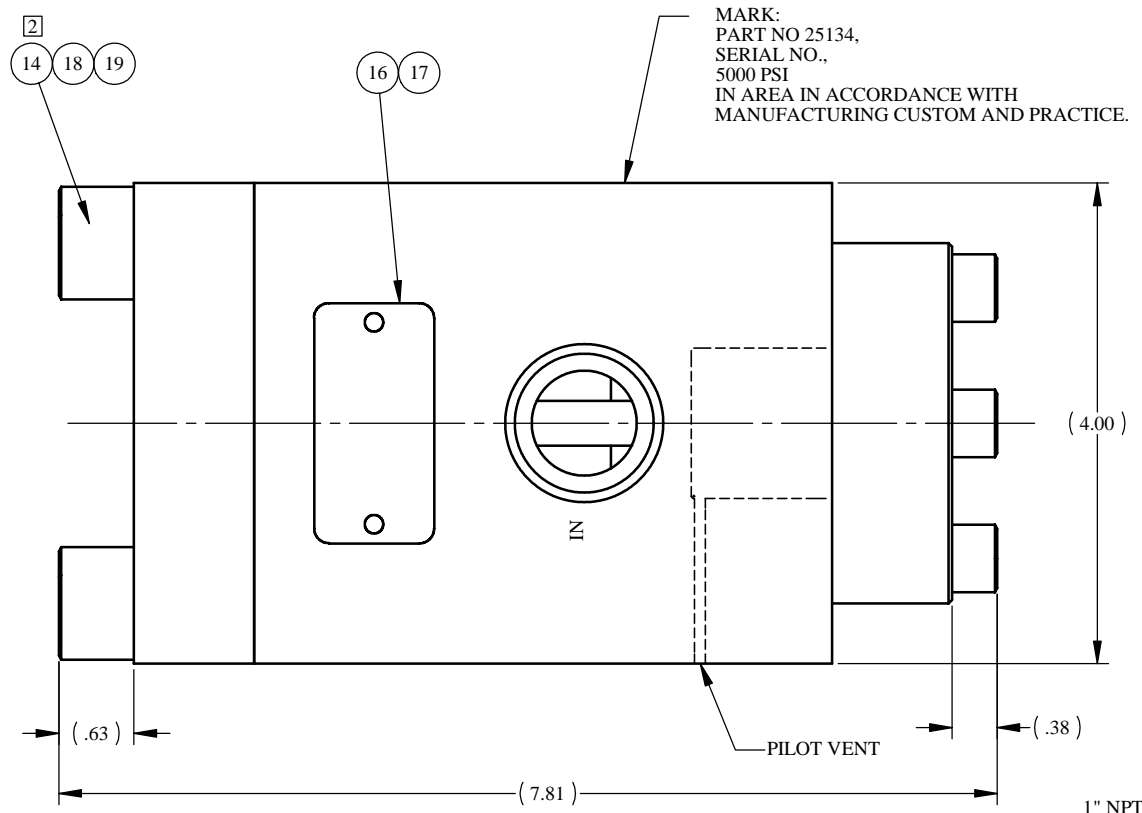


REV	ECN/ERN NO.	DRWN	CHKD	APPD
C	ECN 2104	JK 4/4/01	HH 5/15/01	HH 5/15/01

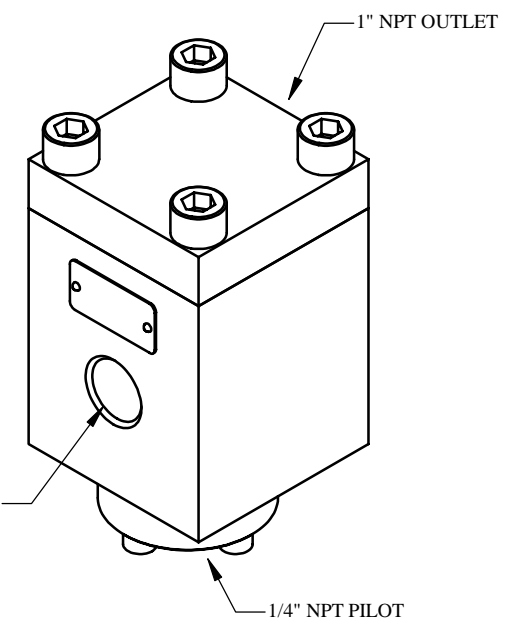
ITEM NO.	QTY.	PART NO.	DESCRIPTION	RK	SK
1	1	23722	BODY, 1" NPT, W/PILOT VENT		
2	1	27157	SEAL	X	X
3	1	22909	SEAL SLEEVE	X	
4	1	22908	CAGE		
5	1	22907	3/4" FLANGE		
6	1	12855	PISTON		
7	1	22940	3/4" PILOT FLANGE W/ 1/4"NPT		
8	2	18100-107C	O-RING	X	X
9	1	18100-074B	O-RING	X	X
10	2	18110-115T	BACKUP RING	X	X
11	2	18100-102C	O-RING	X	X
12	1	18100-008C	O-RING	X	X
13	4	18220-002S	S.H.C.S., 3/8-16 UNC X 1-1/2		
14	4	18224-031	S.H.C.S., 5/8-11 UNC X 1-3/4		
15	1	12050	COMPRESSION SPRING		
16	1	12225	NAME TAG		
17	2	21082-002	SCREW, DRIVE		
18	A/R	25822	ANTI SEIZE		
19	1	25822-1	ANTI SEIZE PKTS	X	X



SECTION A-A



MOUNTING DETAIL TOP VIEW



PRESSURE DATA
 MAXIMUM PRESSURE - 5,000 PSI
 PROOF PRESSURE - 7,500 PSI
 CRACKING PRESSURE - 110 PSI
 PILOT PRESSURE/OUTLET RATIO - 1:4
 PILOT VENT - EXTERNAL

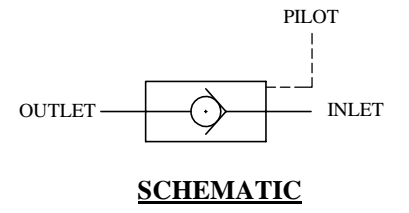
FLOW DATA
 MAXIMUM FLOW CAPACITY - 250 GPM
 Cv = 11.5
 FLUIDS - WATER, AND MINERAL OIL BASED HYDRAULIC FLUID

PORTS
 INLET - 1" NPT
 OUTLET - 1" NPT
 PILOT - 1/4" NPT

GENERAL DATA
 TEMPERATURE RANGE - +32°F TO +200°F
 APPROX WEIGHT - 27 LBS
 FIELD SERVICEABLE

MATERIALS
 STAINLESS STEEL
 PEEK
 NITRILE RUBBER

PATENT NO. 4,793,590 APPLIES



NOTES:
 1. TORQUE PILOT FLANGE BOLTS (ITEM 13) TO 18 FT-LBS.
 2. TORQUE MAIN FLANGE BOLTS (ITEM 14) TO 115 FT-LBS.
 1. X DEPICTS PARTS IN REPAIR KIT 25134 RK/SK.

MATERIAL SEE INDIV BOM ITEMS	TOLERANCES: DECIMALS FRACTIONS ANGLE X ± .1 ± 1/32 ± 1° XX ± .01 XXX ± .005	DRWN BY RLR	DATE 12/15/93	GILMORE VALVE CO. 1231 LUMPKIN RD. HOUSTON, TX. 77043
TREATMENT	CONDITION	CHKD BY HOSE'	DATE	
PROC. NO.	DEBURR BREAK SHARP EDGES .010 INTERNAL RADIUS .015 FINISH 63	APPD BY	DATE	
THE INFORMATION CONTAINED IN THIS DRAWING IS THE SOLE PROPERTY OF GILMORE VALVE CO. UNLESS OTHERWISE STATED, ANY REPRODUCTION IN PART OR WHOLE WITHOUT THE WRITTEN PERMISSION OF GILMORE VALVE CO. IS PROHIBITED.		ERN NO.	DATE	
DIMENSIONS ARE IN INCHES DO NOT SCALE DRAWING INTERPRET DIM. & TOL. PER ASME Y14.5M - 1994				SIZE C
		SCALE NTS		DWG NO. 25134
		SOLIDWORKS		REV C
		SHEET 1 OF 1		