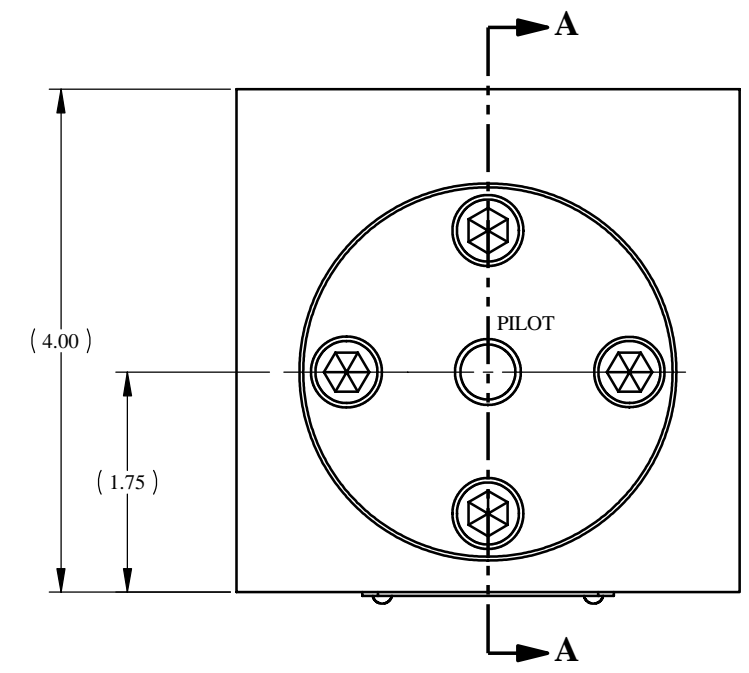
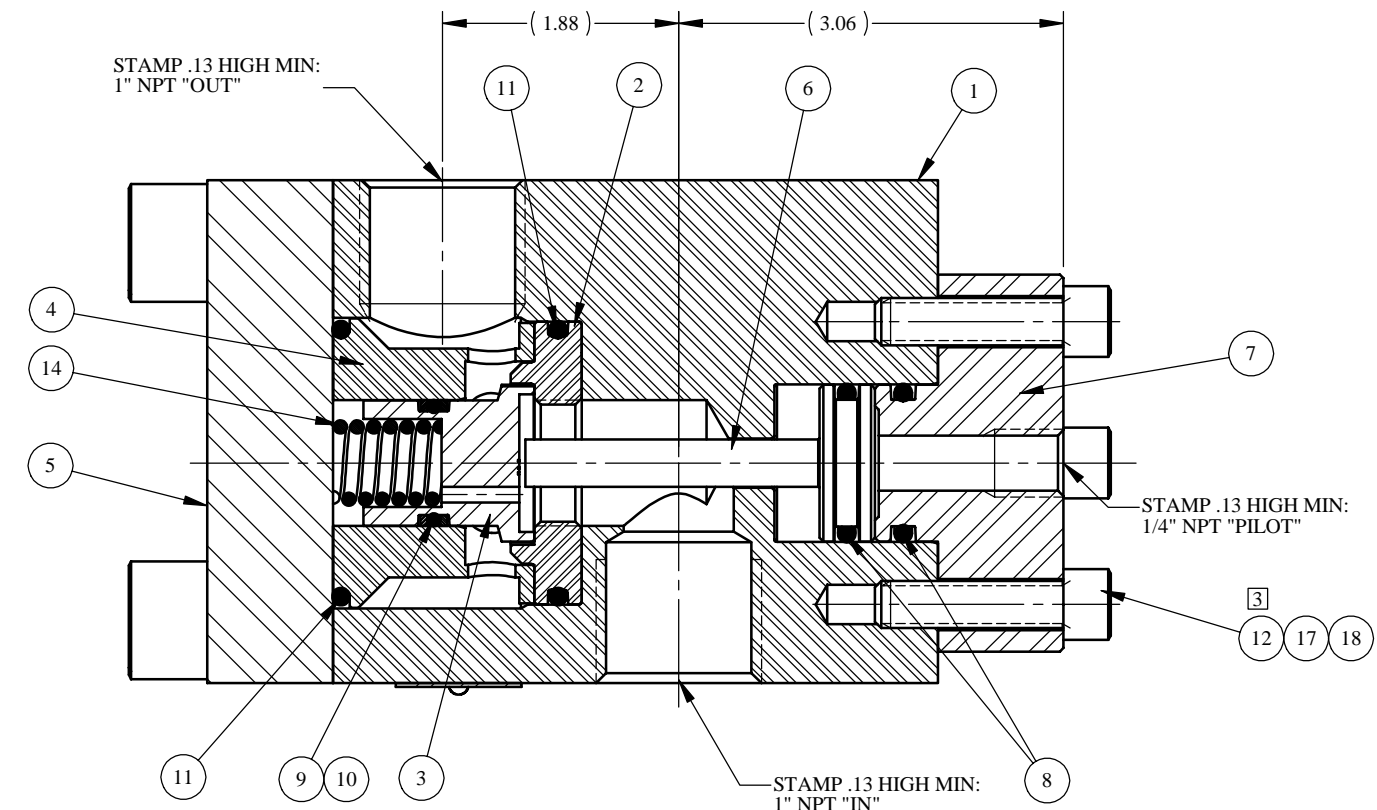


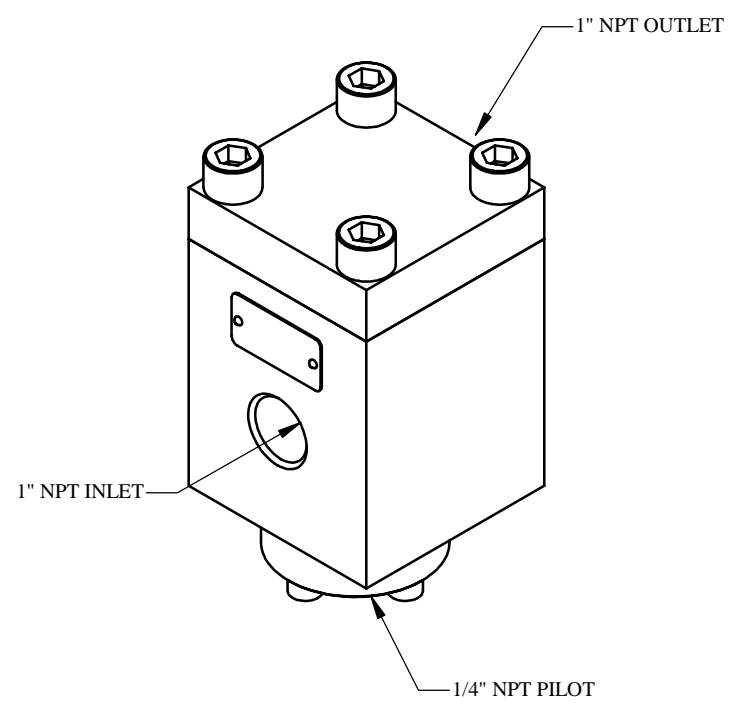
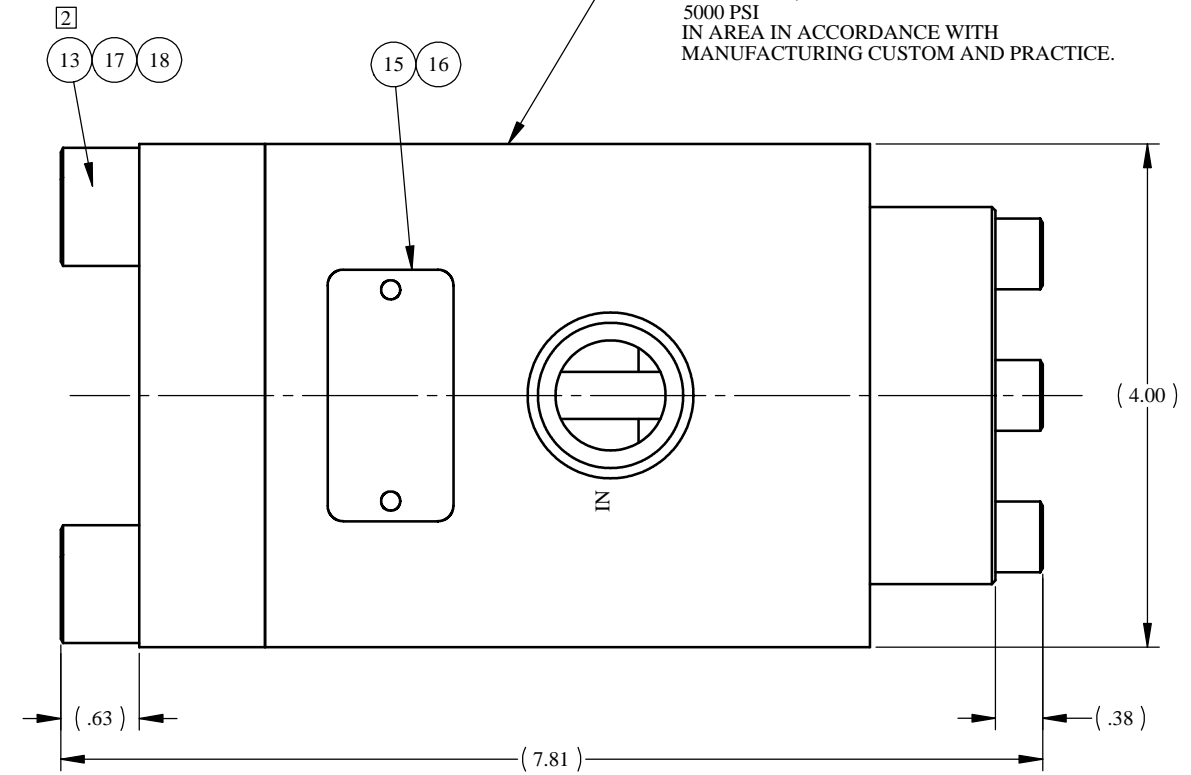
REV	ECN/ERN NO.	DRWN	CHKD	APPD
D	ECN 2104	JK 4/4/01	HH 5/11/01	HH 5/11/01

ITEM NO.	QTY.	PART NO.	DESCRIPTION	RK	SK
1	1	23716	BODY, 1" NPT		
2	1	27157	SEAL	X	X
3	1	22909	SEAL SLEEVE	X	
4	1	23715	CAGE		
5	1	23713	BLIND FLANGE		
6	1	22912	PISTON		
7	1	23717	PILOT FLANGE W/ 1/4"NPT		
8	2	18100-107C	O-RING	X	X
9	1	18100-074B	O-RING	X	X
10	2	18110-115T	BACKUP RING	X	X
11	2	18100-102C	O-RING	X	X
12	4	18220-002S	S.H.C.S., 3/8-16 UNC X 1-1/2		
13	4	18224-031	S.H.C.S., 5/8-11 UNC X 1-3/4		
14	1	12050	COMPRESSION SPRING		
15	1	12225	NAME TAG		
16	2	21082-002	SCREW, DRIVE		
17	A/R	25822	ANTI SEIZE		
18	1	25822-1	ANTI SEIZE PKTS	X	X



SECTION A-A

MARK:
PART NO 25133,
SERIAL NO.,
5000 PSI
IN AREA IN ACCORDANCE WITH
MANUFACTURING CUSTOM AND PRACTICE.



PRESSURE DATA
 MAXIMUM PRESSURE - 5,000 PSI
 PROOF PRESSURE - 7,500 PSI
 CRACKING PRESSURE - 110 PSI
 PILOT PRESSURE/OUTLET RATIO - 1:4
 PILOT VENT - INTERNAL

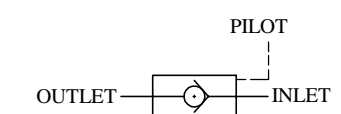
FLOW DATA
 MAXIMUM FLOW CAPACITY - 250 GPM
 Cv = 11.5
 FLUIDS - WATER, AND MINERAL OIL
 BASED HYDRAULIC FLUID

PORTS
 INLET - 1" NPT
 OUTLET - 1" NPT
 PILOT - 1/4" NPT

GENERAL DATA
 TEMPERATURE RANGE - -20°F TO +200°F
 APPROX WEIGHT - 27 LBS
 FIELD SERVICEABLE

MATERIALS
 AUSTENITIC STAINLESS STEEL
 PEEK
 NITRILE RUBBER

PATENT NO. 4,793,590 APPLIES



SCHEMATIC

NOTES:
 3 TORQUE PILOT FLANGE BOLTS (ITEM 12) TO 18 FT-LBS.
 2 TORQUE MAIN FLANGE BOLTS (ITEM 13) TO 85 FT-LBS.
 1. X DEPICTS PARTS IN REPAIR KIT 25133 RK/SK.

MATERIAL SEE INDIV BOM ITEMS	TOLERANCES: DECIMALS FRACTIONS ANGLES X ± .1 ± 1/32 ± 1° XX ± .01 XXX ± .005	DRWN BY JOSE'	DATE 8/5/93	GILMORE VALVE CO. 1231 LUMPKIN RD. HOUSTON, TX. 77043
TREATMENT	CONDITION	CHKD BY RLR	DATE	
DEBURR BREAK SHARP EDGES 0.10 INTERNAL RADIUS 0.15 FINISH 63	PROC. NO.	APPD BY	DATE	
THE INFORMATION CONTAINED IN THIS DRAWING IS THE SOLE PROPERTY OF GILMORE VALVE CO. UNLESS OTHERWISE STATED, ANY REPRODUCTION IN PART OR WHOLE WITHOUT THE WRITTEN PERMISSION OF GILMORE VALVE CO. IS PROHIBITED.		ERN NO.	DATE	
DIMENSIONS ARE IN INCHES DO NOT SCALE DRAWING INTERPRET DIA. & COL. PER ASME Y14.5M - 1994				SIZE C
		DWG NO. 25133		REV D
		SCALE 1:1	SOLIDWORKS	SHEET 1 OF 1