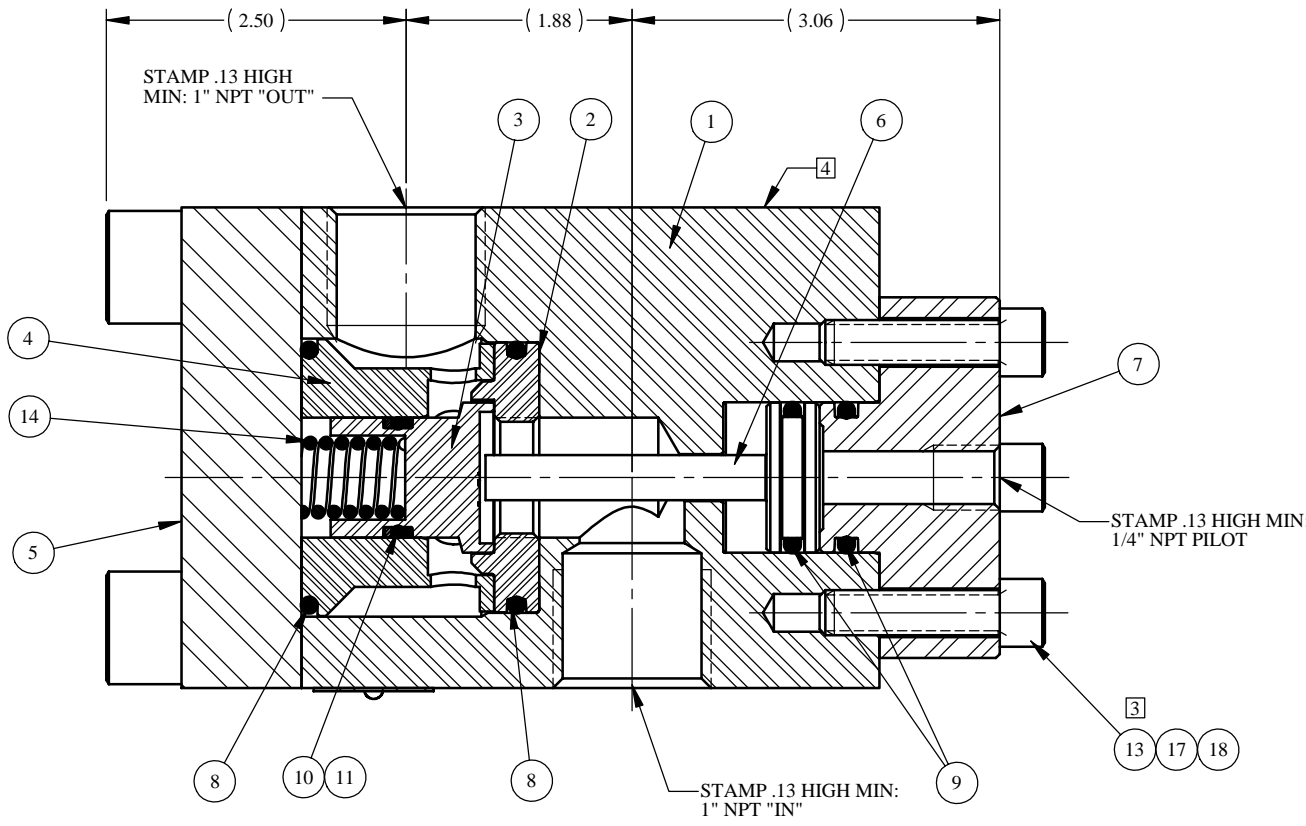
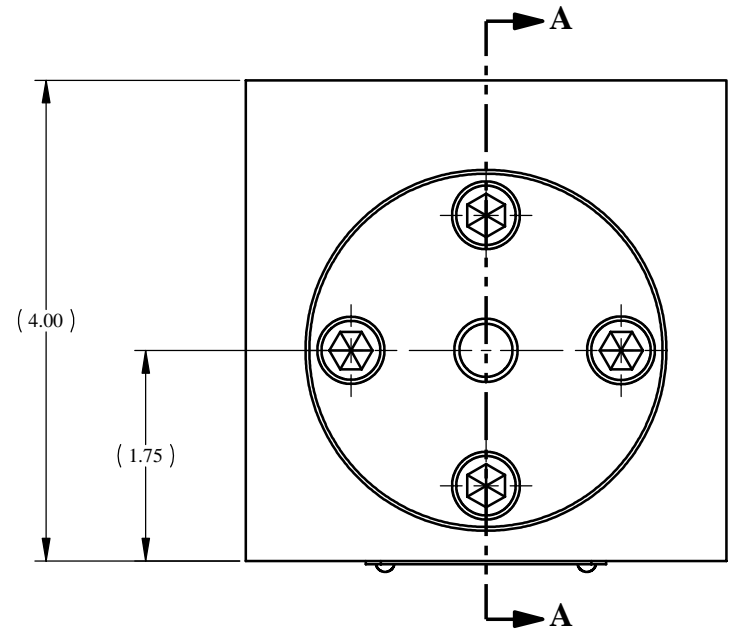


| REV | ECN/ERN NO. | DRWN | CHKD | APPD |
|-----|-------------|-----------|------------|------------|
| G | ECN 2104 | JK 4/5/01 | HH 5/11/01 | HH 5/11/01 |



SECTION A-A



| ITEM NO. | QTY. | PART NO. | DESCRIPTION | RK | SK |
|----------|------|------------|------------------------------|----|----|
| 1 | 1 | 22932 | BODY, 1" NPT | | |
| 2 | 1 | 27157 | SEAL | X | X |
| 3 | 1 | 22909 | SEAL SLEEVE | X | |
| 4 | 1 | 22908 | CAGE | | |
| 5 | 1 | 22907 | 3/4" FLANGE | | |
| 6 | 1 | 22912 | PISTON | | |
| 7 | 1 | 22940 | 3/4" PILOT FLANGE W/ 1/4"NPT | | |
| 8 | 2 | 18100-102C | O-RING | X | X |
| 9 | 2 | 18100-107C | O-RING | X | X |
| 10 | 1 | 18100-074B | O-RING | X | X |
| 11 | 2 | 18110-115T | BACKUP RING | X | X |
| 12 | 4 | 18220-701S | S.H.C.S., 5/8-11 UNC X 1-3/4 | | |
| 13 | 4 | 18220-002S | S.H.C.S., 3/8-16 UNC X 1-1/2 | | |
| 14 | 1 | 12050 | COMPRESSION SPRING | | |
| 15 | 1 | 12225 | NAME TAG | | |
| 16 | 2 | 21082-002 | SCREW, DRIVE | | |
| 17 | A/R | 25822 | ANTI SEIZE | | |
| 18 | 1 | 25822-1 | ANTI SEIZE | X | X |

PRESSURE DATA
 MAXIMUM PRESSURE - 5,000 PSI
 PROOF PRESSURE - 7,500 PSI
 CRACKING PRESSURE - 110 PSI
 PILOT PRESSURE/OUTLET RATIO - 1:4
 PILOT VENT - INTERNAL

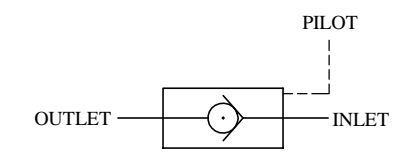
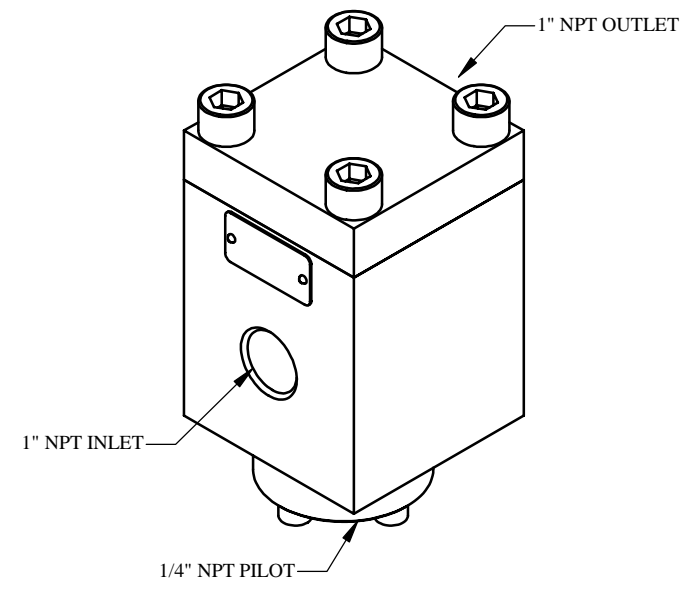
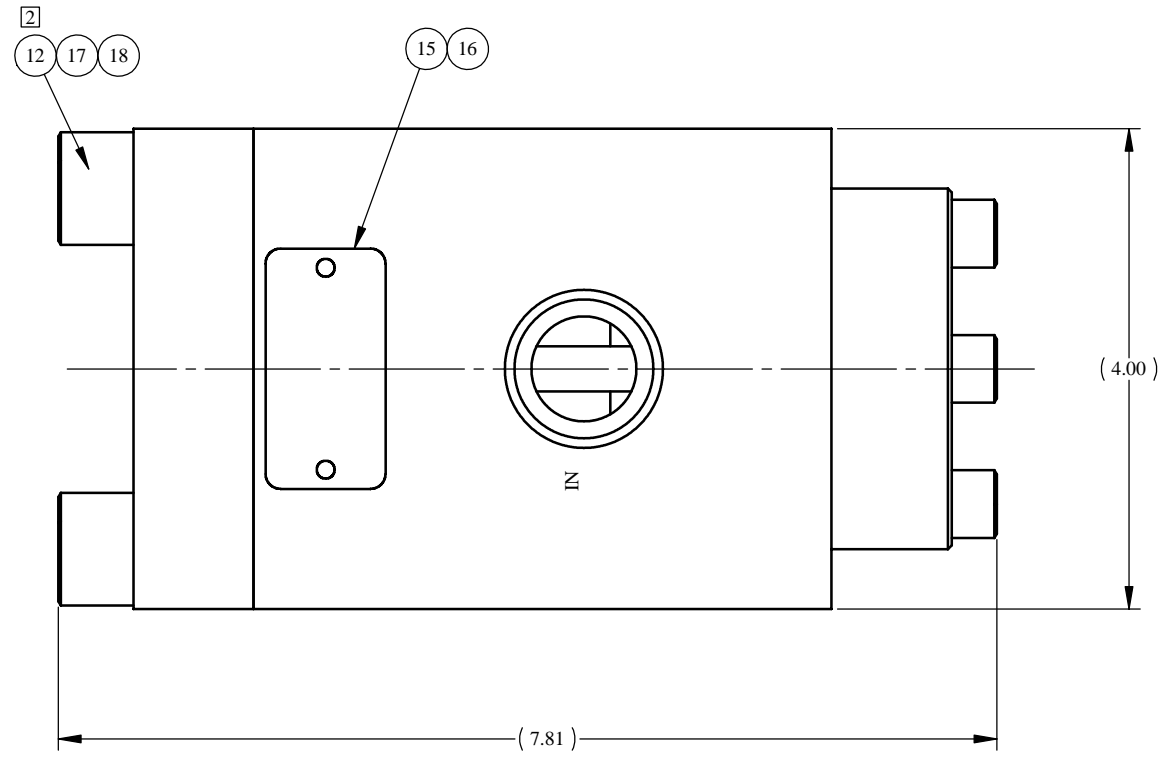
FLOW DATA
 MAXIMUM FLOW CAPACITY - 250 GPM
 Cv = 11.5
 FLUIDS - WATER, AND MINERAL OIL
 BASED HYDRAULIC FLUID

PORTS
 INLET - 1" NPT
 OUTLET - 1" NPT
 PILOT - 1/4" NPT

GENERAL DATA
 TEMPERATURE RANGE - -20°F TO +200°F
 APPROX WEIGHT - 27 LBS
 FIELD SERVICEABLE

MATERIALS
 STAINLESS STEEL
 PEEK
 NITRILE RUBBER

PATENT NO: 4,793,590 APPLIES



SCHEMATIC

- NOTES:**
- MARK PART NO 25100, SERIAL NO, 5000 PSI IN AREA IN ACCORDANCE WITH MANUFACTURING CUSTOM AND PRACTICE.
 - TORQUE MAIN FLANGE BOLTS (ITEM 12) TO 100 FT-LBS.
 - TORQUE PILOT FLANGE BOLTS (ITEM 13) TO 18 FT-LBS.
 - X DEPICTS PARTS IN REPAIR KIT 25100 RK/SK.

| | | | | | | | |
|---|-----------|---|------|----------------------------|-------------------------|--|--|
| MATERIAL SEE INDIV BOM ITEMS | | UNLESS OTHERWISE SPECIFIED TOLERANCES: DECIMALS FRACTIONS ANGLE X ± .1 ± 1/32 ± .1° XX ± .01 XXX ± .005 DEBURR BREAK SHARP EDGES .010 INTERNAL RADIUS .015 FINISH 68 ✓ | | DRWN BY RRW | DATE 7/30/80 | GILMORE VALVE CO. 1231 LUMPKIN RD. HOUSTON, TX. 77043 | |
| TREATMENT | CONDITION | CHKD BY | DATE | | | | |
| PROC. NO. GVCP-0230 | | DIMENSIONS ARE IN INCHES DO NOT SCALE DRAWING INTERPRET DIM. & TOL. PER ASME Y14.5M - 1994 | | APPD BY | DATE | VALVE, CHECK, PILOT OPERATED, 1" NPT | |
| THE INFORMATION CONTAINED IN THIS DRAWING IS THE SOLE PROPERTY OF GILMORE VALVE CO. UNLESS OTHERWISE STATED, ANY REPRODUCTION IN PART OR WHOLE WITHOUT THE WRITTEN PERMISSION OF GILMORE VALVE CO. IS PROHIBITED. | | ERN NO. | DATE | SIZE C | DWG NO. 25100 | | |
| SCALE 1:1 | | SOLIDWORKS | | SHEET 1 OF 1 | | | |