

SECTION VIEW

ITEM	DESCRIPTION	PART NO.	REQ'D	RK
1	BODY	12736	1	
2	SPRING GUIDE	11763	1	
3	SPRING	11741	1	X
4	BALL	18800-001	1	X
5	PISTON ROD	22723	1	
6	PISTON	22722	1	
7	CAP	12735	1	
8	O-RING	18100-121B	1	X
9	O-RING	18100-074B	1	X
10	RETAINER RING	18400-068	1	X
11	O-RING	18100-008C	1	X
12	BACK-UP RING	18110-115T	1	X
13	BACK-UP RING	18110-006T	1	X
14	SEAL	12408	1	X
15	NAME TAG	12227	1	
16	SCREW, DRIVE	21082-002	2	
17	ANTI SEIZE	25822	A/R	
18	ANTI SEIZE	25822-1	1	X

PRESSURE DATA

MAXIMUM PRESSURE - 10,000 PSI
 PROOF PRESSURE - 15,000 PSI
 CRACKING PRESSURE - 80 PSI
 PILOT PRESSURE TO OPEN - 1,700 PSI
 INLET PRESSURE
 PILOT PRESSURE = 5.8
 PILOT VENT - EXTERNAL

FLOW DATA

Cv = 1.6
 FLUIDS - WATER AND MINERAL OIL
 BASED HYDRAULIC FLUID

PORTS

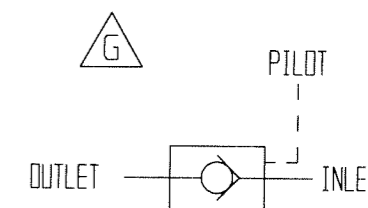
INLET - 1/2" NPT
 OUTLET - 1/2" NPT
 PILOT - 1/4" NPT

GENERAL DATA

TEMPERATURE RANGE - + 32°F TO +200°F
 APPROX WEIGHT - 4-1/2" LBS.
 FIELD SERVICEABLE

MATERIALS

316 SS
 302 SS
 303 SS
 440C
 17-4 PH
 15-7 MD
 DELRIN 500
 NITRILE RUBBER
 TEFLON



SCHEMATIC



- NOTES:**
1. THE FOLLOWING TOOLS ARE REQUIRED FOR REPAIRS.
 ATL 10021 - SEAL REMOVAL TOOL
 ATL 10025 - SEAL INSTALL TOOL
 2. X DEPICTS PARTS IN REPAIR KIT 22720-3 RK
 3. PROCEDURE NO. GVCEP-0446-M

MATERIAL : SEE INDIV BOM ITEMS		
TREATMENT	ROCKWELL "C"	TOLERANCES UNLESS OTHERWISE SPEC.
		3 - PLACE DEC. ± .005
		2 - PLACE DEC. ± .01
ALL PIPE THREADS TO BE IN ACCORD - ANCE WITH AMERICAN STANDARD GAUGE UNLESS OTHERWISE SPECIFIED.		FRACTIONAL ±
		ANGULAR ± 3°

NO.	REVISIONS	DATE	DR.	CK.
C	ECN 2871	11/18/04	JOSE	12/16/04

NAME OF PART	
VALVE, CHECK, 1/2" PILOTED OPERATED, SOFT SEAT	
GILMORE VALVE COMPANY HOUSTON, TEXAS	
DATE - 8/29/03	REFERENCE
SCALE - FULL	
DR. BY - JOSE L. CA'ERES	DRAWING NO.
C'K'D BY - RLR	22720-3
APP'D BY -	