

ITEM	DESCRIPTION	PART NO.	REQ'D	RK
1	BODY	22721-1	1	
2	SPRING GUIDE	11763-1	1	
3	SPRING	11741	1	X
4	BALL	18800-029	1	X
5	PISTON ROD	22723-1	1	
6	PISTON	22722-1	1	
7	CAP	12735	1	
8	O-RING	18100-121B	1	X
9	O-RING	18100-074C	1	X
10	RETAINER RING	18400-068	1	X
11	SEAL	12408	1	X
12	BACK-UP RING	18110-115T	1	X
13	NAME TAG	12227	1	
14	SCREW, DRIVE	21082-002	2	
15	ANTI SEIZE	25822	A/R	
16	ANTI SEIZE	25822-1	1	X

PRESSURE DATA

MAXIMUM PRESSURE - 10,000 PSI
 PROOF PRESSURE - 15,000 PSI
 CRACKING PRESSURE - 80 PSI
 PILOT PRESSURE TO OPEN - 1,700 PSI
 PILOT VENT - INTERNAL
 INLET PRESSURE
 PILOT PRESSURE = 5.8

MATERIALS

316 SS
 302 SS
 TUNGSTEN CARBIDE
 NITRONIC 60
 15-7 MD
 DELRIN 500
 NITRILE RUBBER
 TEFLON

FLOW DATA

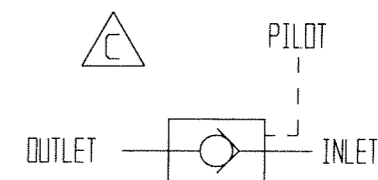
Cv = 1.6
 FLUIDS - WATER AND MINERAL OIL
 BASED HYDRAULIC FLUID

PORTS

INLET - 1/2" NPT
 OUTLET - 1/2" NPT
 PILOT - 1/4" NPT

GENERAL DATA

TEMPERATURE RANGE - + 32°F TO +200°F
 APPROX WEIGHT - 4-1/2" LBS.
 FIELD SERVICEABLE



SCHEMATIC

- NOTES:**
1. THE FOLLOWING TOOLS ARE REQUIRED FOR REPAIRS.
 ATL 10021 - SEAL REMOVAL TOOL
 ATL 10025 - SEAL INSTALL TOOL
 2. X DEPICTS PARTS IN REPAIR KIT 22440-3 RK
 3. THIS VALVE DEPENDS ON PRESSURE IN PORT "A" TO RESET PILOT PISTON.
 4. PROCEDURE NO. GVCEP-0446-M

MATERIAL : SEE INDIV BOM ITEMS			
TREATMENT	ROCKWELL "C"	UNLESS OTHERWISE	TOLERANCES SPEC.
		3 - PLACE DEC.	± .005
		2 - PLACE DEC.	± .01
ALL PIPE THREADS TO BE IN ACCORD - ANCE WITH AMERICAN STANDARD GAUGE UNLESS OTHERWISE SPECIFIED.		FRACTIONAL	±
		ANGULAR	± 3°

NO.	REVISIONS	DATE	DR.	CK.
C	ECN 2871	11/17/04	JOSE	<i>[Signature]</i>

NAME OF PART	
VALVE, CHECK, 1/2" PILOTED OPERATED, SOFT SEAT	
GILMORE VALVE COMPANY HOUSTON, TEXAS	
DATE - 11-30-95	REFERENCE
SCALE - FULL	
DR. BY - JOSE	DRAWING NO.
C'K'D BY - RLR	22440-3
APP'D BY -	