

ITEM	DESCRIPTION	PART NO.	REQ'D	RK
1	BODY	12190	1	
2	SPRING GUIDE	11763	1	
3	SPRING	11741	1	X
4	BALL	18800-001	1	X
5	PISTON ROD	22723	1	
6	PISTON	22722	1	
7	CAP	11762	1	
8	O-RING	18100-121B	1	X
9	O-RING	18100-074B	1	X
10	RETAINER RING	18400-068	1	X
11	SEAL	12408	1	X
12	BACK-UP RING	18110-115T	1	X
13	NAME TAG	12227	1	
14	SCREW, DRIVE	21082-002	2	
15	ANTI SEIZE	25822	A/R	
16	ANTI SEIZE	25822-1	1	X

**PRESSURE DATA**

MAXIMUM PRESSURE - 10,000 PSI  
 PROOF PRESSURE - 15,000 PSI  
 PILOT PRESSURE TO OPEN - 1,700 PSI  
 CRACKING PRESSURE - 80 PSI  
 INLET PRESSURE = 5.8  
 PILOT PRESSURE  
 PILOT VENT - INTERNAL

**MATERIALS**

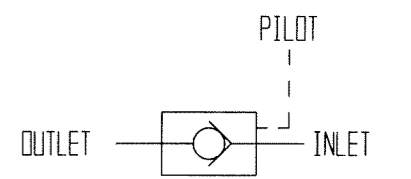
303 SS  
 440C  
 17-4 PH  
 15-7 MO  
 DELRIN 500  
 NITRILE RUBBER  
 TEFLON

**FLOW DATA**

Cv = 1.6  
 FLUIDS - WATER AND MINERAL OIL  
 BASED HYDRAULIC FLUID

**PORTS**

INLET - 1/2" NPT  
 OUTLET - 1/2" NPT  
 PILOT - 1/4" NPT



**GENERAL DATA**

TEMPERATURE RANGE - + 32°F TO +200°F  
 APPROX WEIGHT - 4-1/2" LBS.  
 FIELD SERVICEABLE

- NOTES:**
1. THE FOLLOWING TOOLS ARE REQUIRED FOR REPAIRS.  
 ATL 10021 - SEAL REMOVAL TOOL  
 ATL 10025 - SEAL INSTALL TOOL
  2. X DEPICTS PARTS IN REPAIR KIT 22440-1 RK
  3. PROCEDURE NO. GVCEP-0446-M

MATERIAL : SEE INDIV BOM ITEMS		
TREATMENT	ROCKWELL "C"	TOLERANCES UNLESS OTHERWISE SPEC.
		3 - PLACE DEC. ± .005
		2 - PLACE DEC. ± .01
ALL PIPE THREADS TO BE IN ACCORDANCE WITH AMERICAN STANDARD GAUGE UNLESS OTHERWISE SPECIFIED.		FRACTIONAL ±
		ANGULAR ± 3°

G	ECN 2871	11/16/04	JOSE	12/6/04
NO.	REVISIONS	DATE	DR.	CK.

NAME OF PART	
VALVE, CHECK, 1/2" PILOTED OPERATED, SOFT SEAT	
GILMORE VALVE COMPANY HOUSTON, TEXAS	
DATE - 7-29-86	REFERENCE
SCALE - FULL	
DR. BY - JOSE	DRAWING NO.
C'K'D BY -	22440-1
APP'D BY - DW	